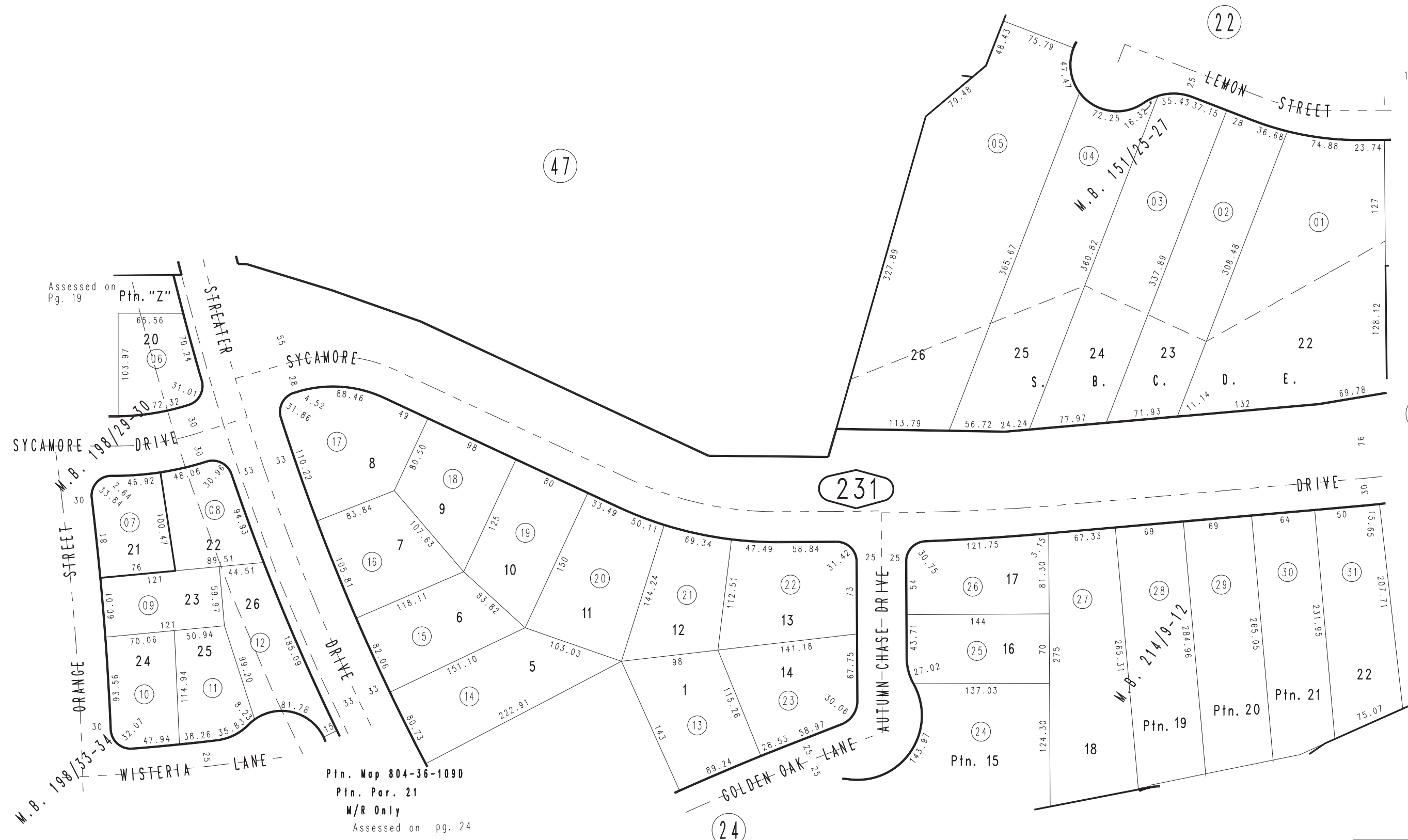


THIS MAP IS FOR THE PURPOSE OF AD VALOREM TAXATION ONLY.

Ptn. Tract No. 10274, M.B. 151/25-27

City of Highland
Tax Rate Area
18001

1201 - 23



Assessed on Pg. 19

Ptn. "Z"

Ptn. Map 804-36-1090
Ptn. Par. 21
M/R Only
Assessed on pg. 24

Ptn. Tract No. 10727, M.B. 203/23-26, Amending Map, M.B.214/9-12
Ptn. Tract No. 12620, M.B. 198-33-34
Ptn. Tract No. 12620-2, M.B. 198/29-30

Ptn. N.E.1/4, Sec. 3
T.1S., R.3W.

Assessor's Map
Book 1201 Page 23
San Bernardino County

REVISED
8-29-96 AL
9-04-01 AL