

THIS MAP IS FOR THE PURPOSE OF AD VALOREM TAXATION ONLY.

Ptn. S.E.1/4, N.W.1/2 Fract'l. Sec. 3, T.1S.,R.3W. S.B.M.

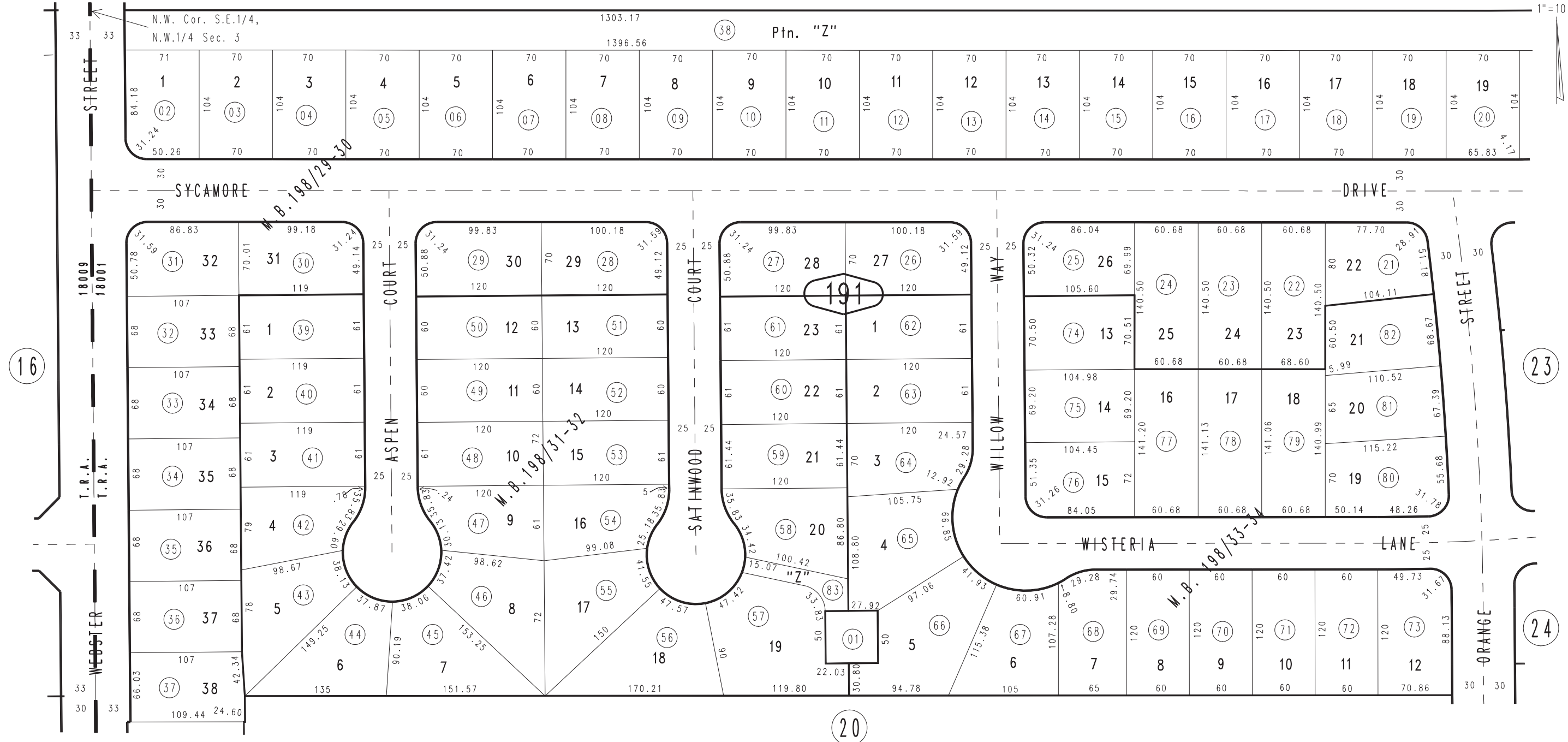
City of Highland
Tax Rate Area
18001

1201 - 19



18

1"=100'



AUGUST 1996

Ptn. Tract No. 12620, M.B. 198/33-34
Tract No. 12620-3, M.B. 198/31-32
Ptn. Tract No. 12620-2, M.B. 198/29-30

Assessor's Map
Book 1201 Page 19
San Bernardino County

REVISED
02/26/10 LH