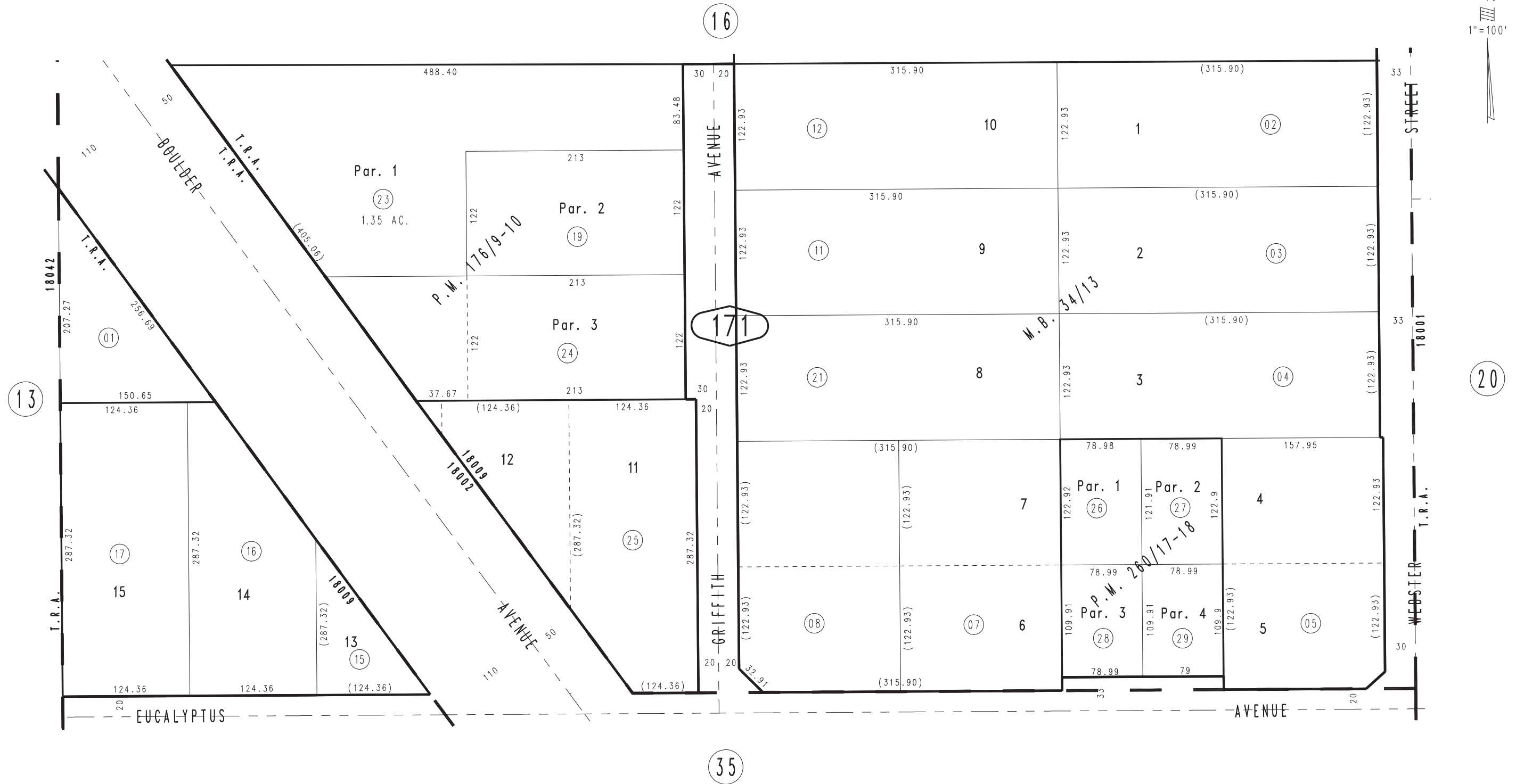


THIS MAP IS FOR THE PURPOSE  
OF AD VALOREM TAXATION ONLY.

Ptn. S.1/2, N.W.1/4, Fract'l. Sec. 3, T.1S.,R.3W. S.B.M.

City of Highland  
Tax Rate Area  
18002 18009

1201 - 17



AUGUST 1996

Parcel Map No. 20383, P.M. 260/17-18  
Parcel Map No. 12873, P.M. 176/9-10  
Clark Subdivision, Tract No. 2387, M.B. 34/13

Assessor's Map  
Book 1201 Page 17  
San Bernardino County

REVISED  
06/09/22 AP  
02/21/23 KA