

THIS MAP IS FOR THE PURPOSE
OF AD VALOREM TAXATION ONLY.

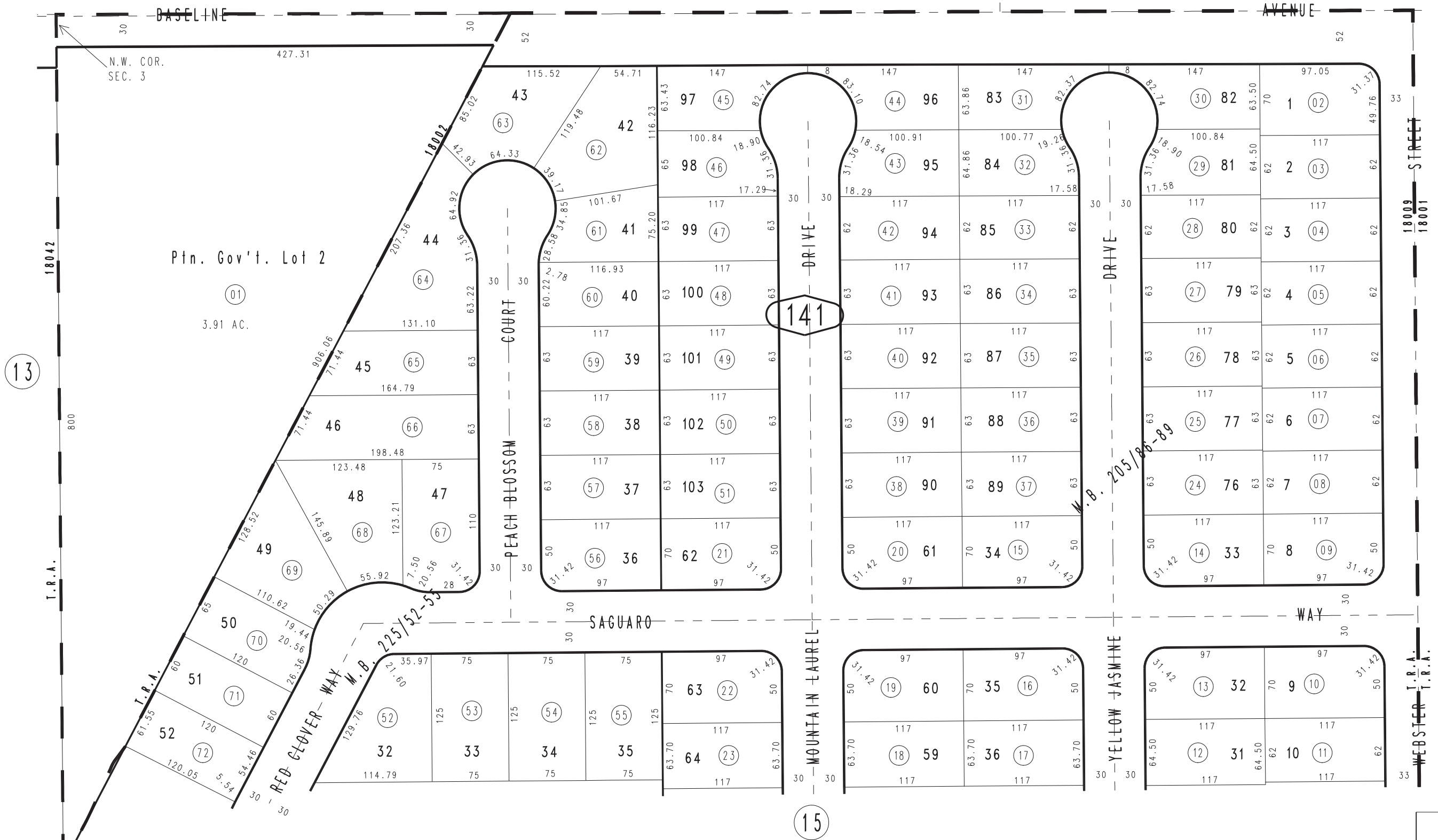
Ptn. N.1/2, N.W.1/4 Fract'l. Sec. 3, T.1S., R.3W. S.B.M.

City of Highland
Tax Rate Area
18002 18009

1201 - 14



1200
54



AUGUST 1996

Ptn. Tract No. 12474, M.B. 225/52-55
Ptn. Tract No. 12474-1, M.B. 205/86-89

Assessor's Map
Book 1201 Page 14
San Bernardino County

REVISED
02/25/10 LH