

THIS MAP IS FOR THE PURPOSE
OF AD VALOREM TAXATION ONLY.

Ptn. S.1/2, N.E.1/4 Fract'l. Sec. 4, T.1S.,R.3W. S.B.M.

City of Highland
Tax Rate Area
18042 18045

1201 - 12



STATE

08

HIGHWAY

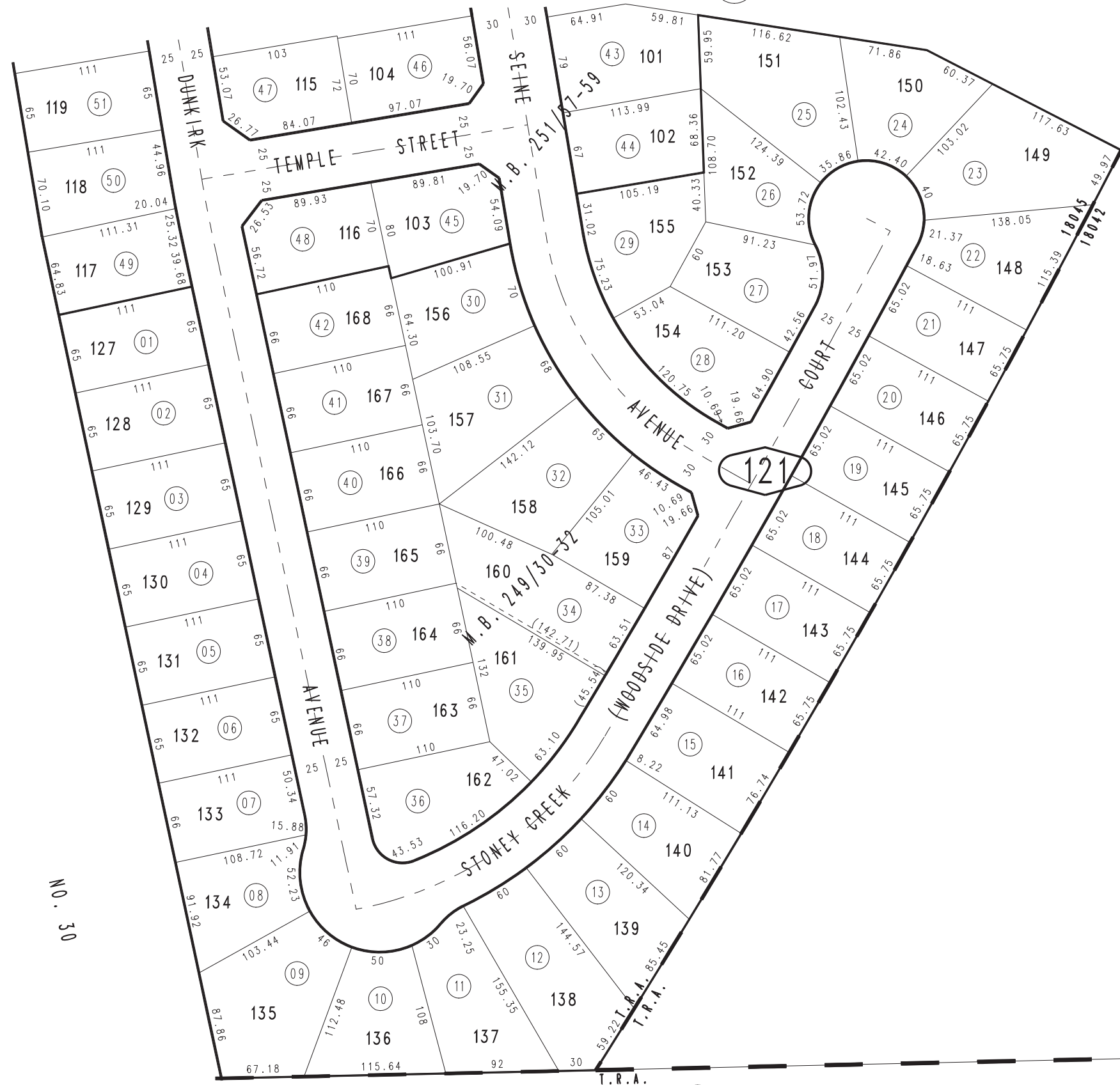
SEC.

4

T.1N.,R.3W.

AUGUST 1996

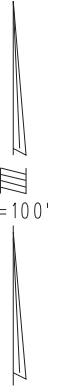
Ptn. Tract No. 14398-3, M.B. 251/57-59
Ptn. Tract No. 14398-1, M.B. 249/30-32



Assessed on
Pg. 11

Ptn. Gov't. Lot 1

11.66 AC.



1"=100'

13

18002

REVISED
02/25/10 LH

Assessor's Map
Book 1201 Page 12
San Bernardino County