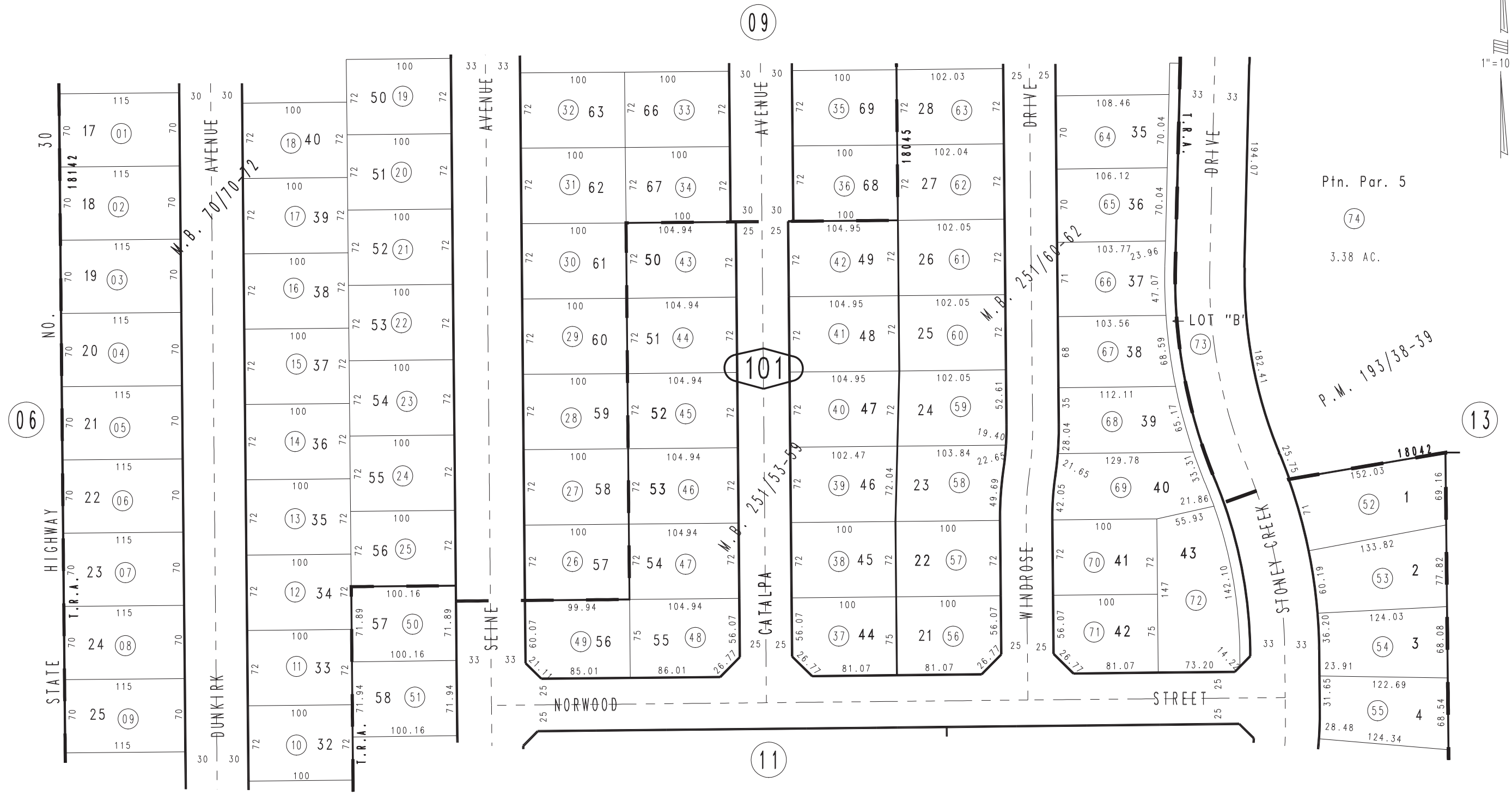


THIS MAP IS FOR THE PURPOSE
OF AD VALOREM TAXATION ONLY.

Ptn. Tract No. 4789, M.B. 70/70-72

City of Highland
Tax Rate Area
18042 18045
18142

1201 - 10



Ptn. Tract No. 14398-2, M.B. 251/53-56
 Ptn. Tract No. 14398, M.B. 251/60-62
 Ptn. Parcel Map No. 15687, P.M. 193/38-39
 Ptn. Parcel Map No. 12849, P.M. 141/77-79

AUGUST 1996

Ptn. N.E.1/4, Sec. 4
T.1S., R.3W.

Assessor's Map
Book 1201 Page 10
San Bernardino County

REVISED
8-23-96 AL
01/08/2002 RM