

THIS MAP IS FOR THE PURPOSE OF AD VALOREM TAXATION ONLY.

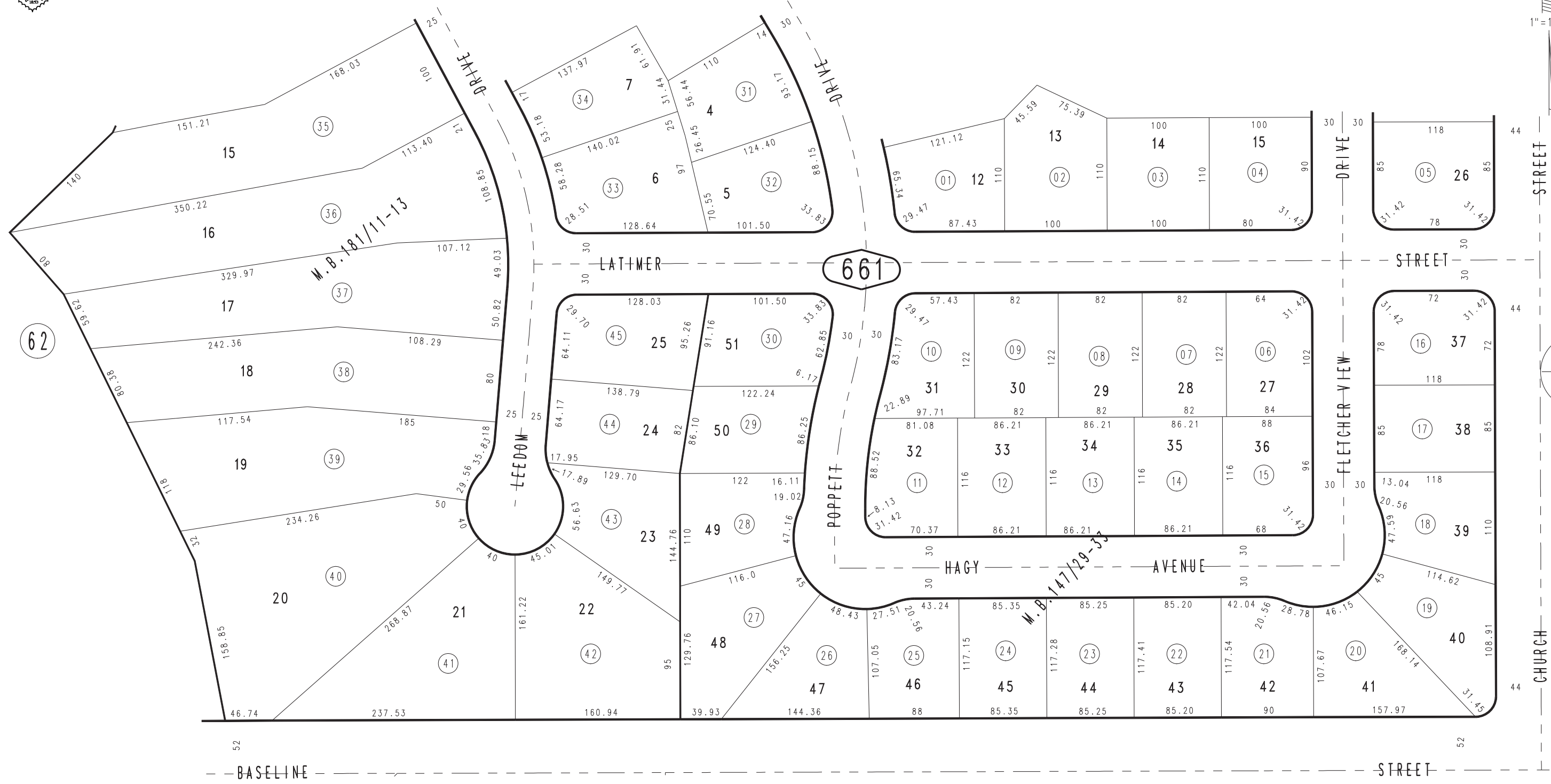
Ptn. Tract No. 10102-1, M.B. 147/29-33

City of Highland
Tax Rate Area
18001

1200 - 66



1"=100'



0288
66

1201
21

1201
25

JULY 1995

Ptn. Tract No. 10102-2, M.B. 181/11-13

Ptn. S.E.1/4, Sec. 34
T.1N., R.3W.

Assessor's Map
Book 1200 Page 66
San Bernardino County

REVISED