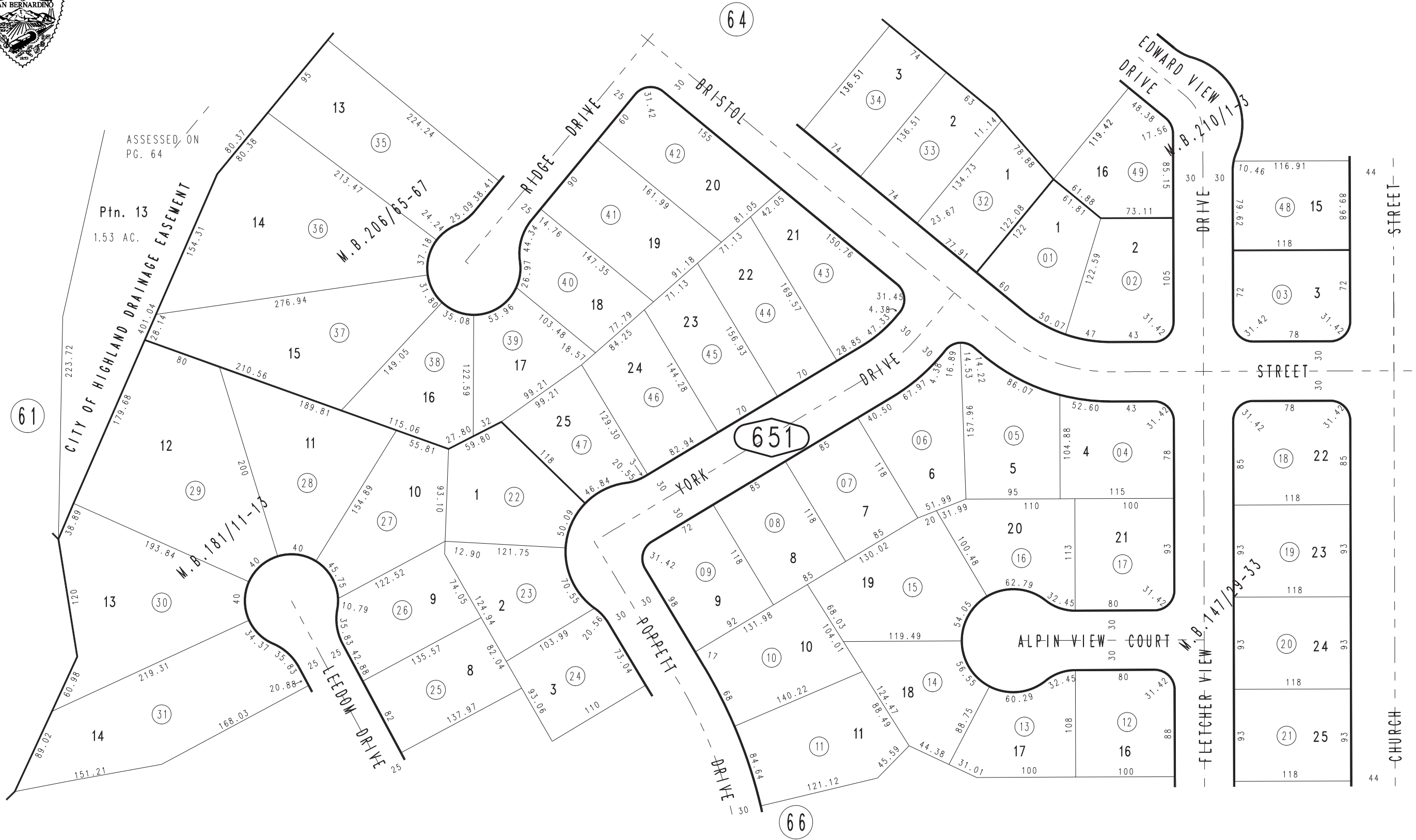


THIS MAP IS FOR THE PURPOSE
OF AD VALOREM TAXATION ONLY.

Ptn. Tract No. 10102-1, M.B. 147/29-33

City of Highland
Tax Rate Area
18001

1200 - 65



JULY 1995

Ptn. Tract No. 10102-4, M.B. 210/1-3
 Ptn. Tract No. 10102-3, M.B. 199/47-49, Amending Map, M.B. 206/65-67
 Ptn. Tract No. 10102-2, M.B. 181/11-13

Ptn. S.E.1/4, Sec. 34
 T.1N., R.3W.

Assessor's Map
 Book 1200 Page 65
 San Bernardino County

REVISED