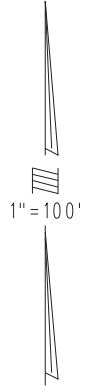
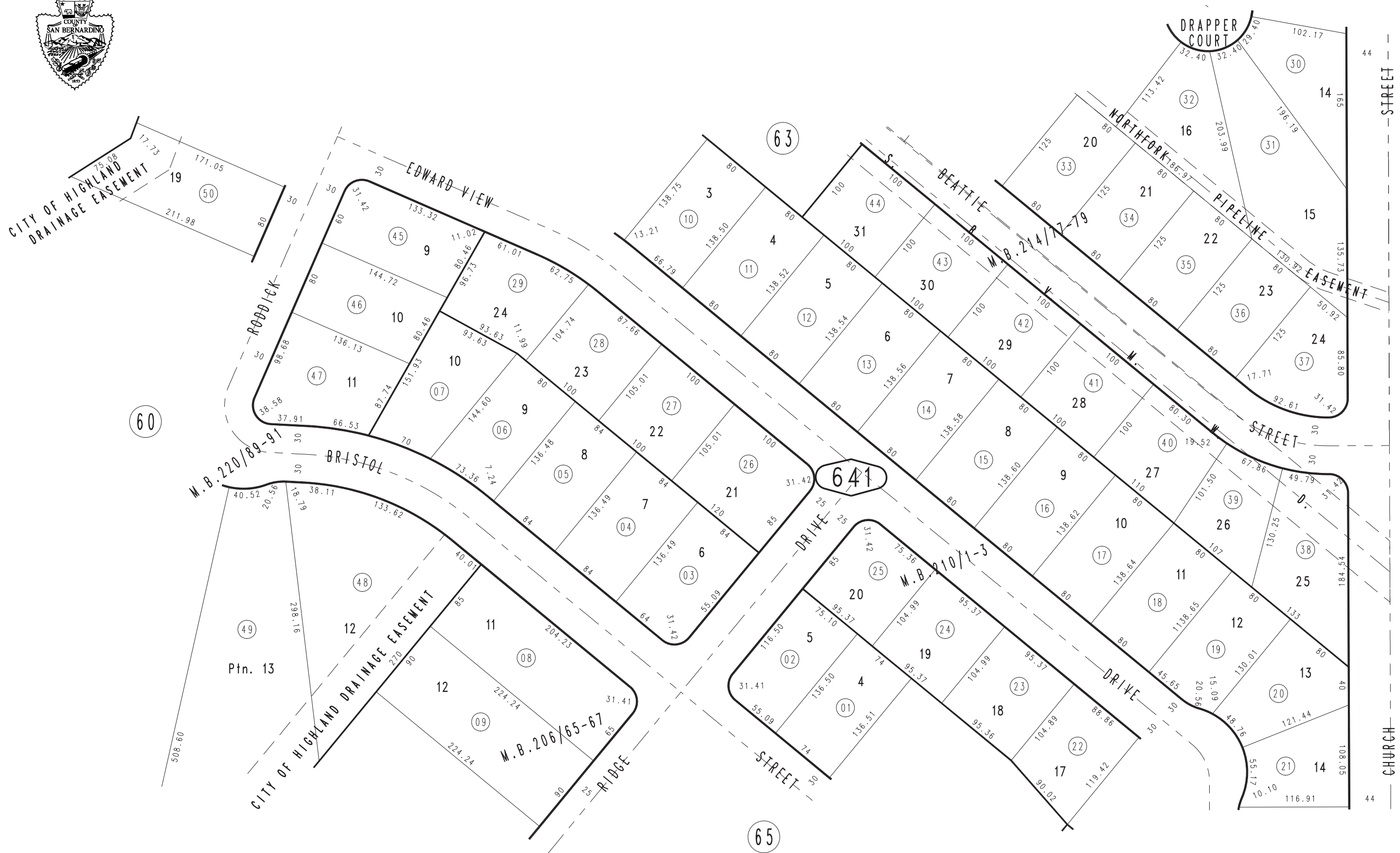


THIS MAP IS FOR THE PURPOSE
OF AD VALOREM TAXATION ONLY.

Ptn. Tract No. 10102-3, M.B. 199/47-49 Amending Map, M.B. 206/65-67

City of Highland
Tax Rate Area
18001

1200 - 64



0288
58

Ptn. Tract No. 10102, M.B. 220/89-91
Ptn. Tract No. 10102-5, M.B. 214/77-79
Ptn. Tract No. 10102-4, M.B. 210/1-3

JULY 1995

Ptn. S.E.1/4, Sec. 34
T.1N., R.3W.

Assessor's Map
Book 1200 Page 64
San Bernardino County

REVISED