

THIS MAP IS FOR THE PURPOSE
OF AD VALOREM TAXATION ONLY.

Ptn. N.1/2, N.E.1/4, S.E.1/4 Sec. 34, T1N.,R3W. S.B.M.

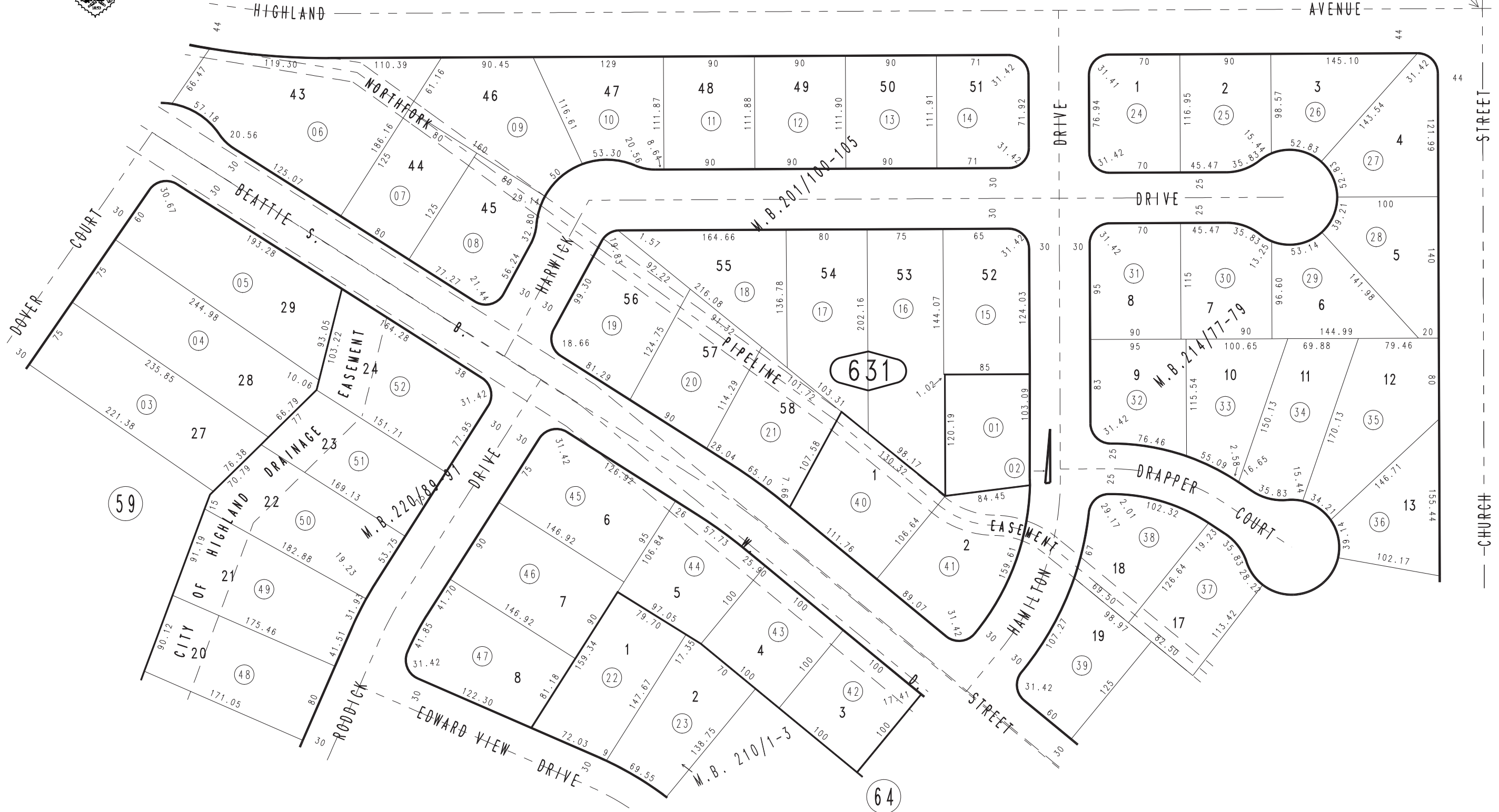
City of Highland
Tax Rate Area
18001

1200 - 63



34

N.E. COR. S.E. 1/4
SEC. 34



0288
59

Ptn. Tract No. 10102, M.B. 220/89-91
Ptn. Tract No. 10102-5, M.B. 214/77-79
Ptn. Tract No. 10102-4, M.B. 210/1-3
Ptn. Tract No. 13315, M.B. 201/100-105

JULY 1995

Assessor's Map
Book 1200 Page 63
San Bernardino County

REVISED
06/12/08 GW