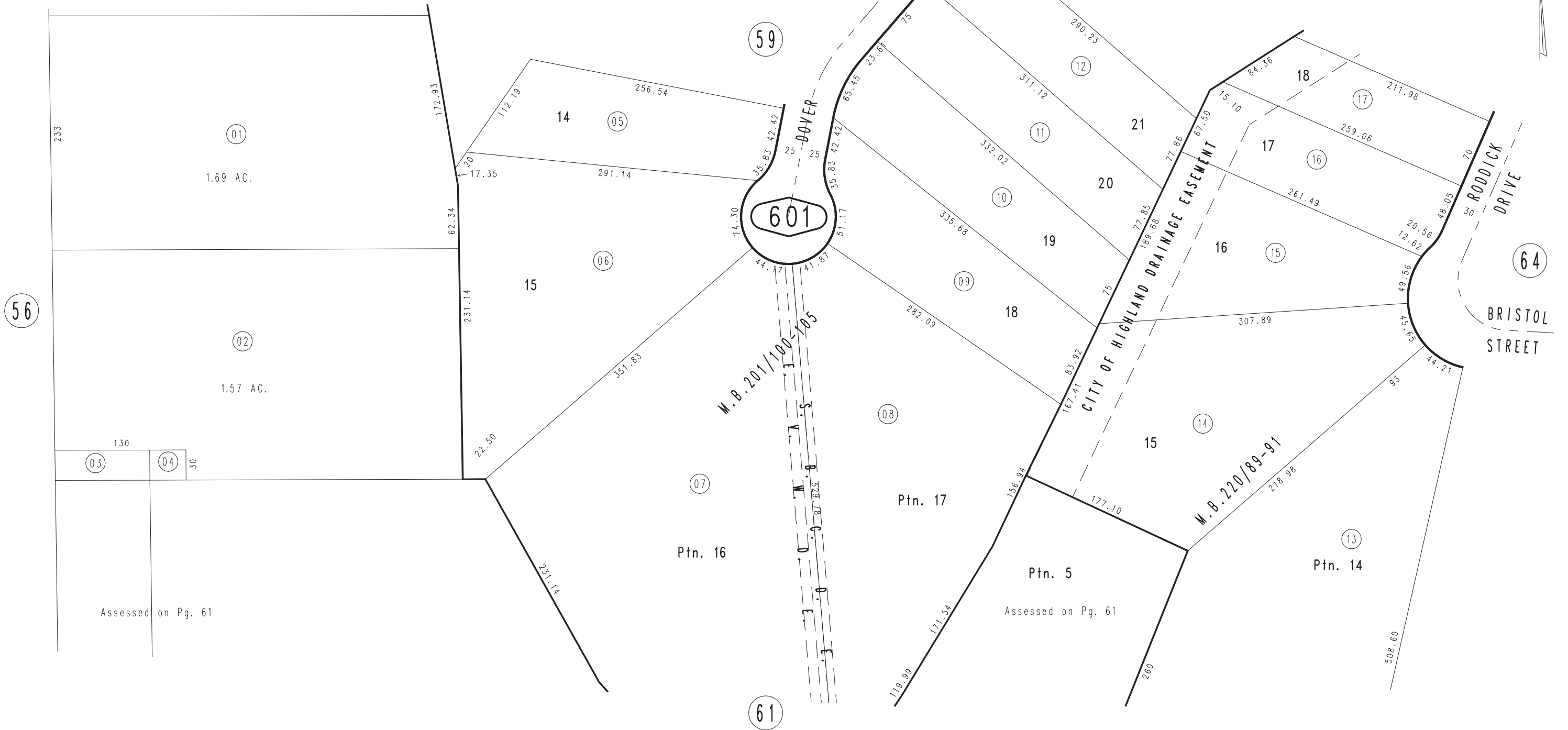


THIS MAP IS FOR THE PURPOSE
OF AD VALOREM TAXATION ONLY.

Ptn. N.W.1/4, S.E.1/4 Sec. 34, T.1N.,R.3W. S.B.M.

City of Highland
Tax Rate Area
18001

1200 - 60



Assessed on Pg. 61

Assessed on Pg. 61

JULY 1995

Ptn. Tract No. 10102, M.B. 220/89-91
Ptn. Tract No. 13315, M.B. 201/100-105

Assessor's Map
Book 1200 Page 60
San Bernardino County

REVISED