

THIS MAP IS FOR THE PURPOSE  
OF AD VALOREM TAXATION ONLY.

S./12, N.W.1/4, S.W.1/4 Sec. 34, T.1N.,R.3W. S.B.M.

City of Highland  
Tax Rate Area  
18001

1200 - 52



51



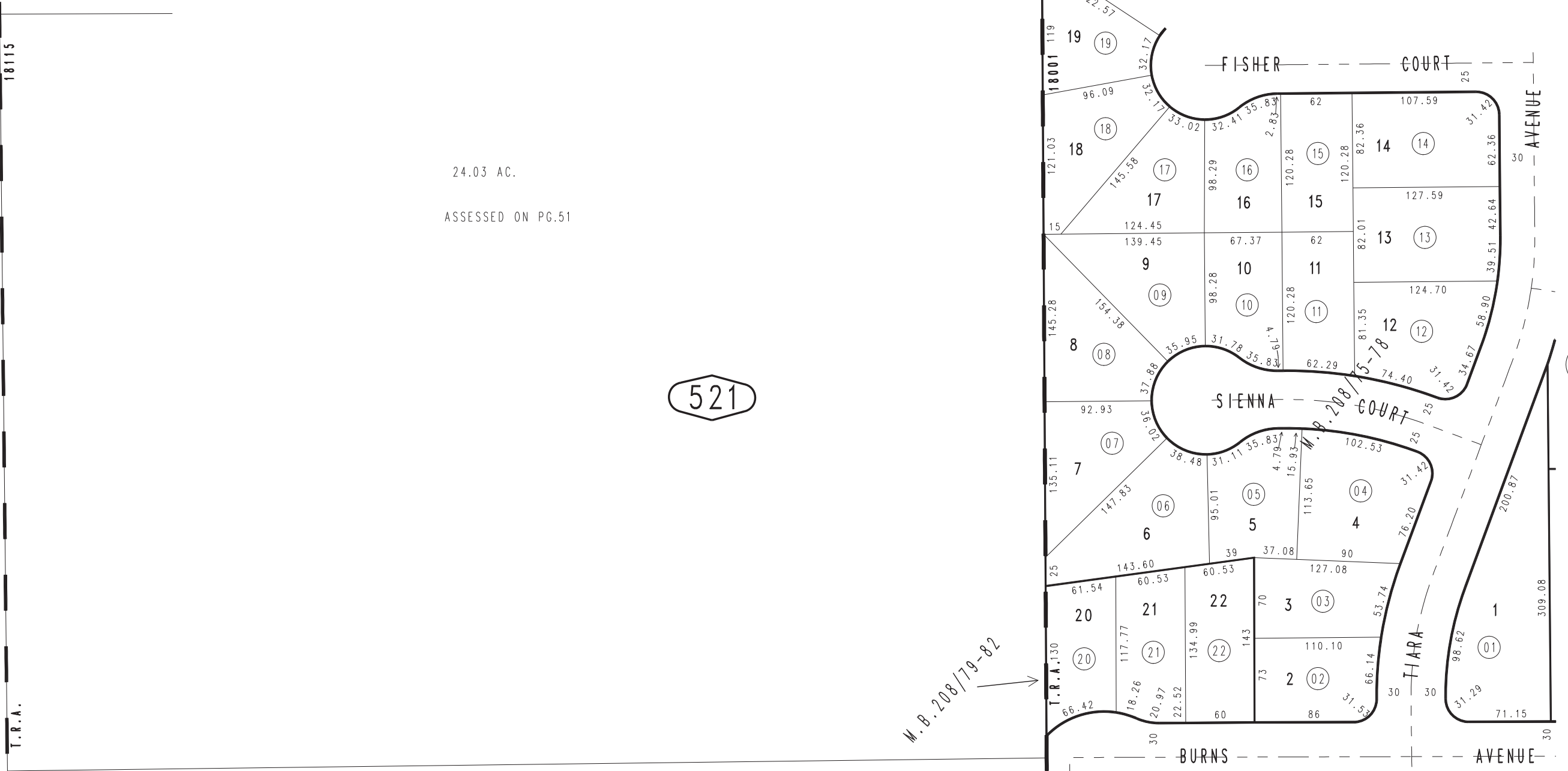
48

24.03 AC.  
ASSESSED ON PG.51

521

56

53



M.B. 208/79-82

Ptn. Tract No. 12484-1, M.B. 208/79-82  
Ptn. Tract No. 12484, M.B. 208/75-78

JULY 1995

Assessor's Map  
Book 1200 Page 52  
San Bernardino County

REVISED