

THIS MAP IS FOR THE PURPOSE
OF AD VALOREM TAXATION ONLY.

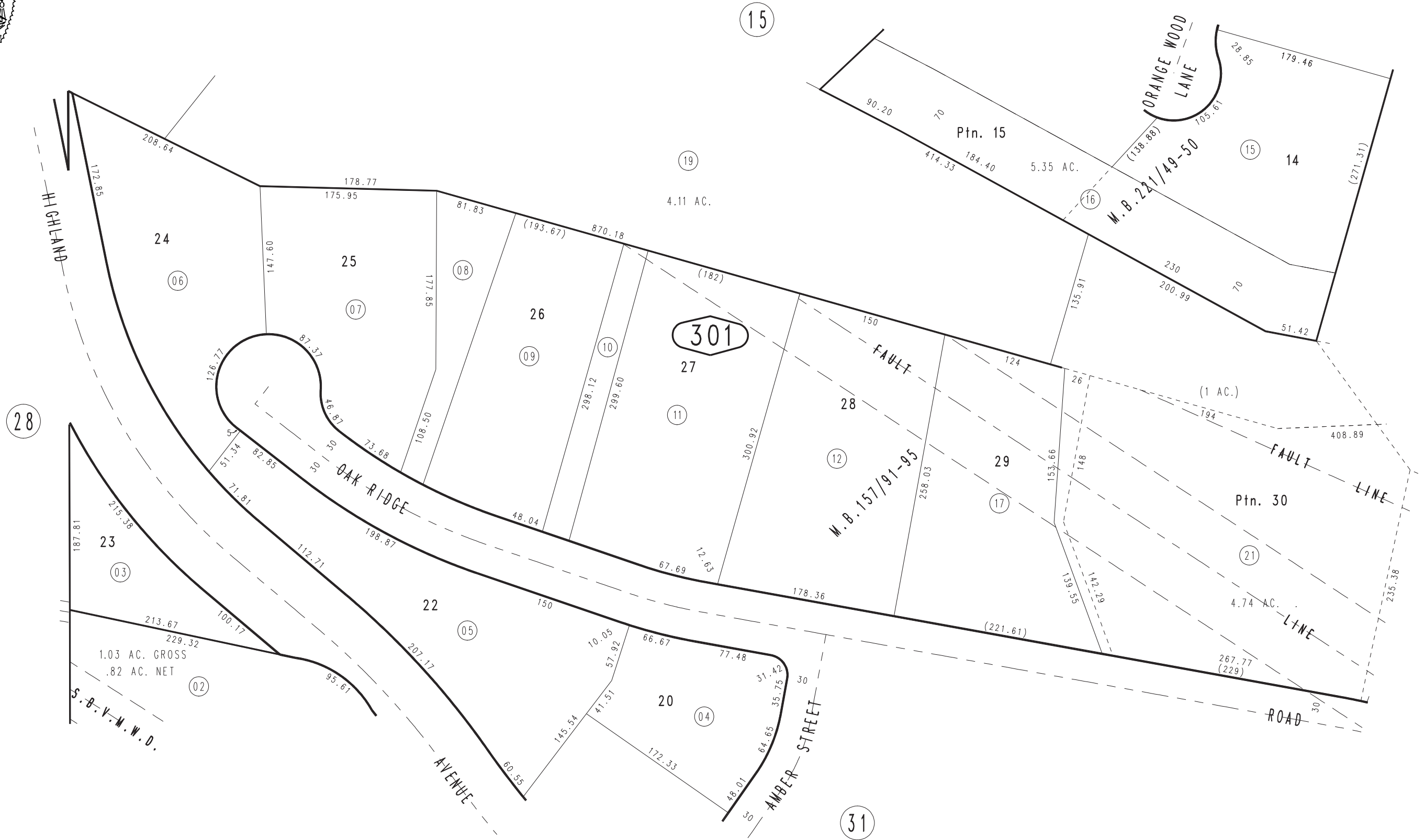
S.W.1/4, N.E.1/4 Sec. 34, T.1N.,R.3W. S.B.M.

City of Highland
Tax Rate Area
18001

1200 - 30



1"=100'



JULY 1995

Ptn. Tract No. 10279, M.B. 221/49-50
Ptn. Tract No. 10195, M.B. 151/80-83, Amending Map M.B. 157/91-95

Assessor's Map
Book 1200 Page 30
San Bernardino County

REVISED
08/21/14 GW