

THIS MAP IS FOR THE PURPOSE OF AD VALOREM TAXATION ONLY.

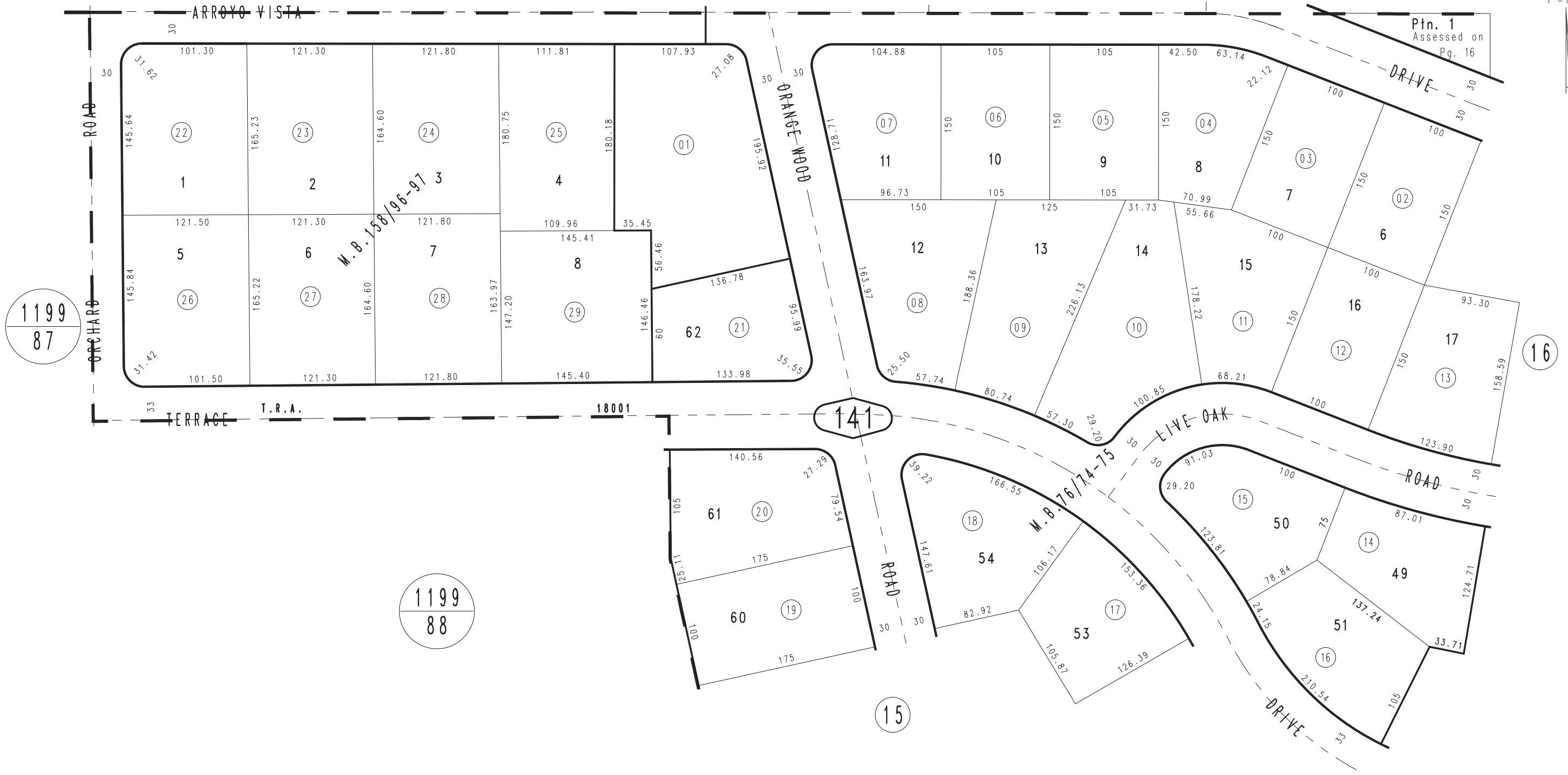
N.1/2, N.W.1/4, N.E.1/4 Sec. 34, T.1N.,R.3W. S.B.M.

City of Highland
Tax Rate Area
18001

1200 - 14



1199
85



Ptn. 1
Assessed on
Pg. 16

1199
87

1199
88

141

15

16

MARCH 1995

Tract No. 10474, M.B. 158/96-97
Ptn. Tract No. 5299, Sycamore Heights Estates, M.B. 76/74-75

Assessor's Map
Book 1200 Page 14
San Bernardino County

REVISED
12/29/22 KC