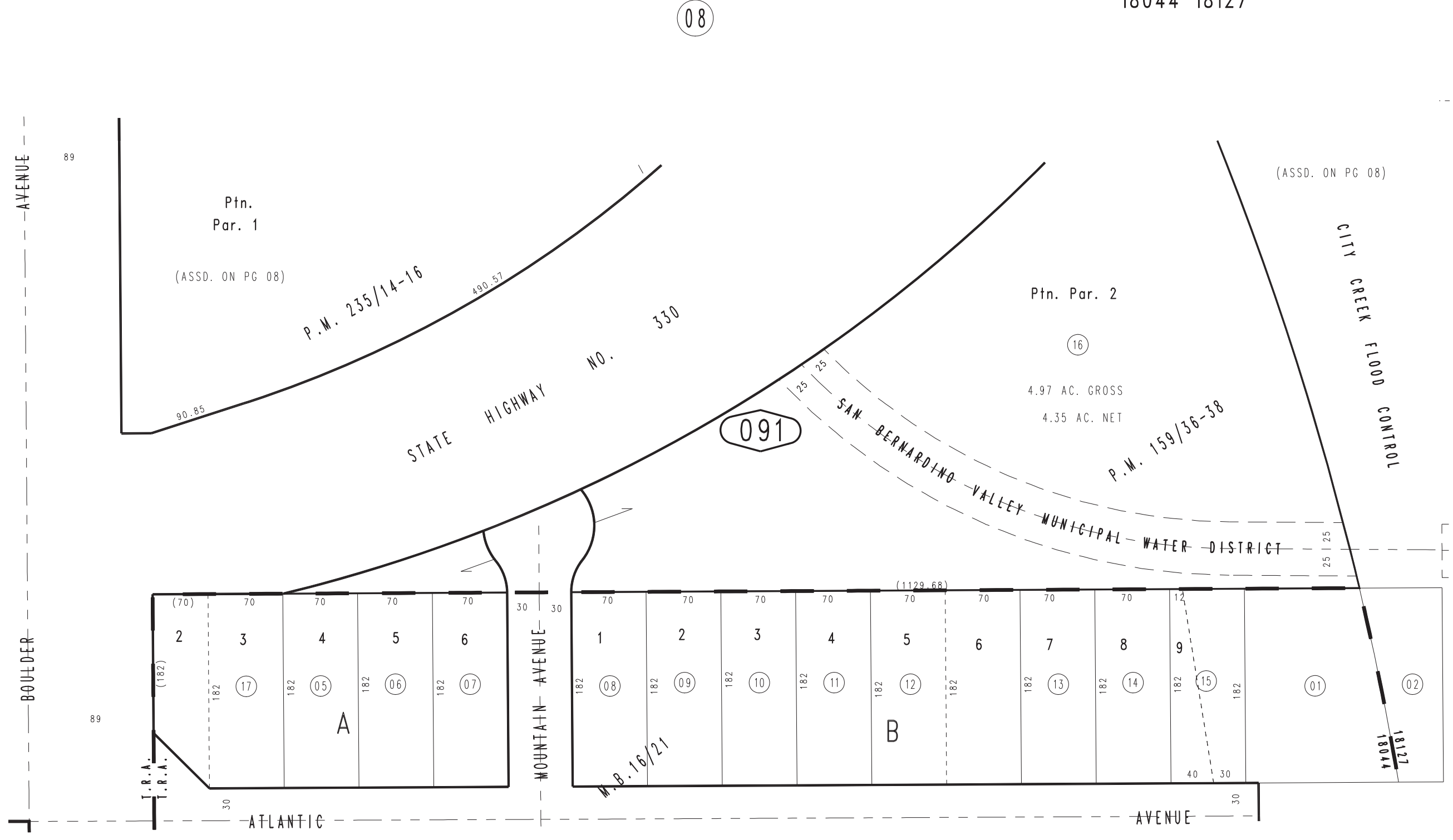


THIS MAP IS FOR THE PURPOSE
OF AD VALOREM TAXATION ONLY.

S.1/2, N.E.1/4, N.E.1/4, Sec. 33, T.1N.,R.3W. S.B.M.

City of Highland
Tax Rate Area
18044 18127

1200 - 09



MARCH 1995

Ptn. Parcel Map No. 19145, P.M. 235/14-16
Ptn. Frye's Addition to Highland, M.B. 16/21
Ptn. Parcel Map No. 12977, P.M. 159/36-38

Assessor's Map
Book 1200 Page 09
San Bernardino County

REVISED
12/01/09 RM