

THIS MAP IS FOR THE PURPOSE OF AD VALOREM TAXATION ONLY.

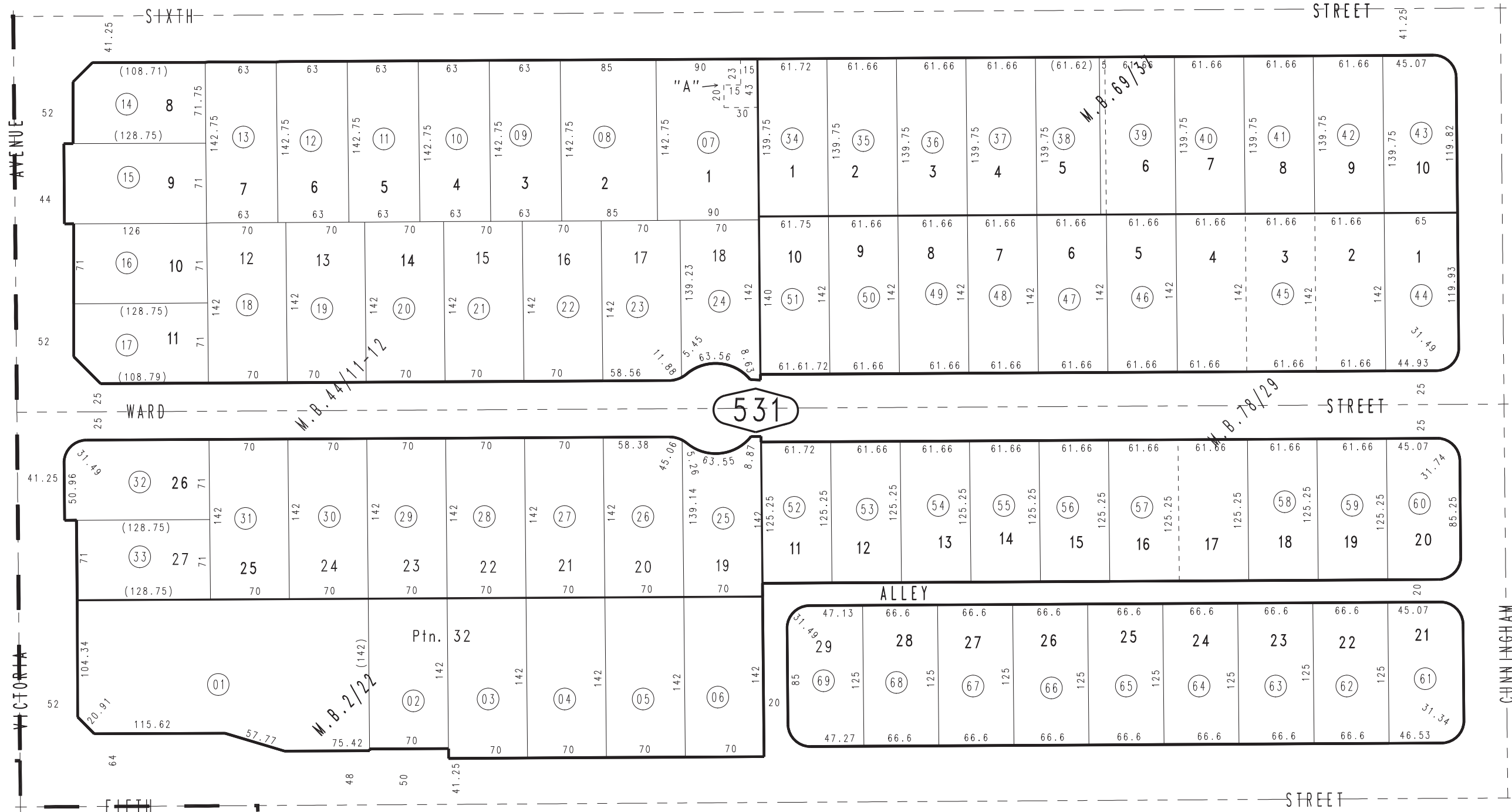
Ptn. Cunningham Subdivision, M.B. 2/22

City of Highland
Tax Rate Area
18042

1192 - 53



51



JULY 1997

Tract No. 6051, M.B. 78/29
Tract No. 5015, M.B. 69/37
Tract No. 3274, M.B. 44/11-12

Ptn. S.W.1/4, Sec. 5
T.1S., R.3W.

Assessor's Map
Book 1192 Page 53
San Bernardino County

REVISED
02/05/19 KA
04/25/19 KA