

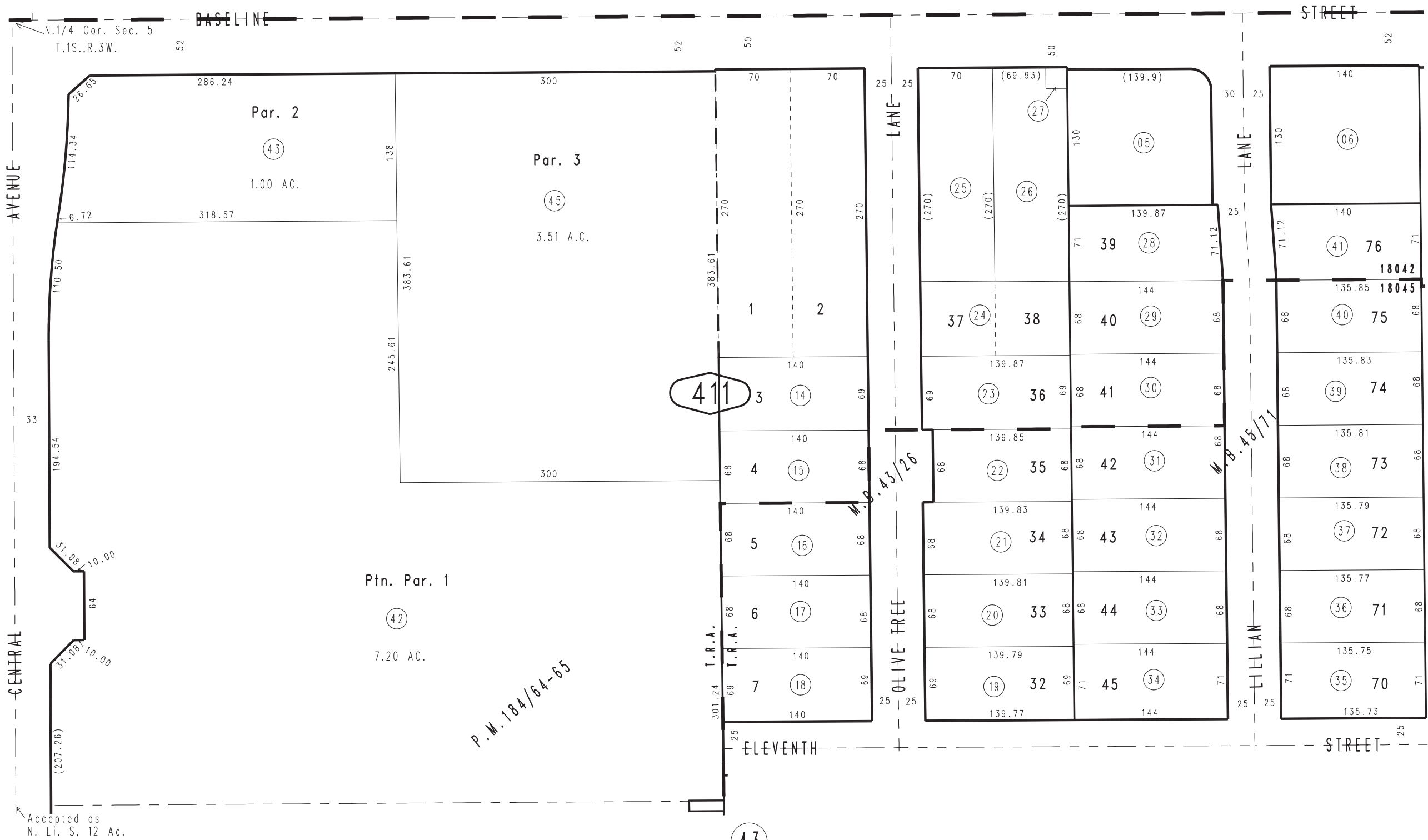
THIS MAP IS FOR THE PURPOSE OF AD VALOREM TAXATION ONLY.

Ptn. N.1/2, N.W.1/4, N.E.1/4, Sec. 5,  
T.1 S., R.3 W., S.B.M.

1191  
46

City of Highland  
Tax Rate Area  
18042,18045

1192 - 41



Accepted as  
N. Li. S. 12 Ac.

Ptn. Parcel Map No. 15119, P.M. 184/64-65  
Ptn. Tract No. 3460, Gimble Subdivision, Unit No. 2, M.B. 45/71  
Ptn. Tract No. 3135, Gimble Subdivision, Unit No. 1, M.B. 43/26

JULY 1997

Assessor's Map  
Book 1192 Page 41  
San Bernardino County

REVISED  
04/09/09 KA  
02/25/10 LH  
04/13/10 KA