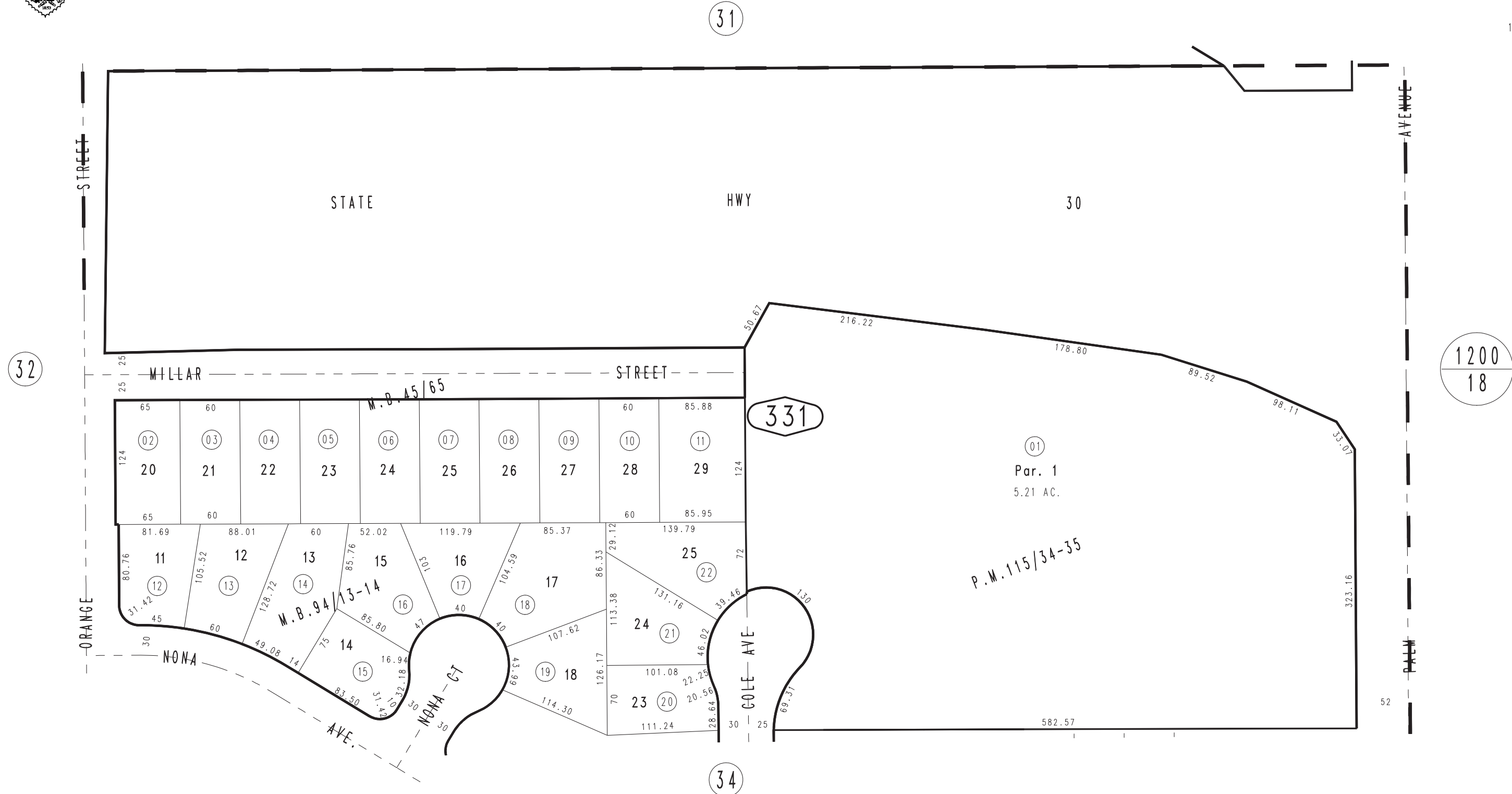


THIS MAP IS FOR THE PURPOSE
OF AD VALOREM TAXATION ONLY.

Ptn. N.E.1/4 Sec. 32, T.1N., R.3W., S.B.B.&M.

City of Highland
Tax Rate Area
18044

1191 - 33



DECEMBER 2001

Parcel Map No. 9759, P.M. 115/34-35
Ptn. Tract No. 6970, M.B. 94/13-14
Ptn. Tract No. 3469, M.B. 45/65, Millar Sub.

Assessor's Map
Book 1191 Page 33
San Bernardino County

REVISED
08/26/09 LH