

THIS MAP IS FOR THE PURPOSE OF AD VALOREM TAXATION ONLY.

Ptn. Tract No. 5986, M.B. 76/30 Highland-Sterling Homes, Unit No. 1

City of San Bernardino 1191 - 05
Tax Rate Area
7004 7204



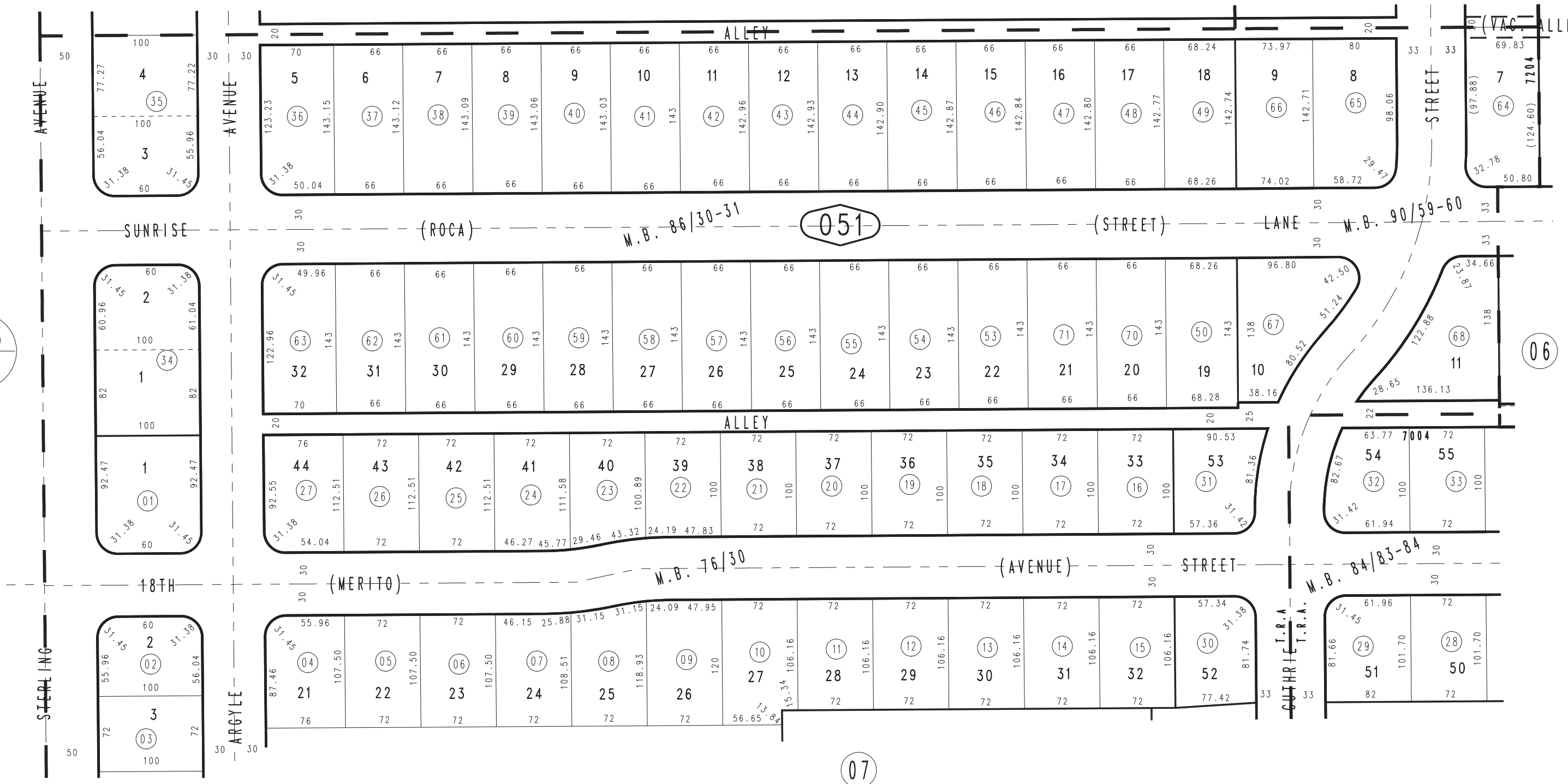
0273
31

03

051

06

07



Ptn. Tract No. 6969, M.B. 90/59-60
Tract No. 6647, M.B. 86/30-31
Ptn. Tract No. 5988, M.B. 84/83-84, Highland Sterling Homes, Unit No.3

Ptn. N.W.1/4, Sec. 31
T.1N., R.3W..

Assessor's Map
Book 1191 Page 05
San Bernardino County

REVISED
12/07/05 KC
12/12/05 KC
01/24/07 GL