

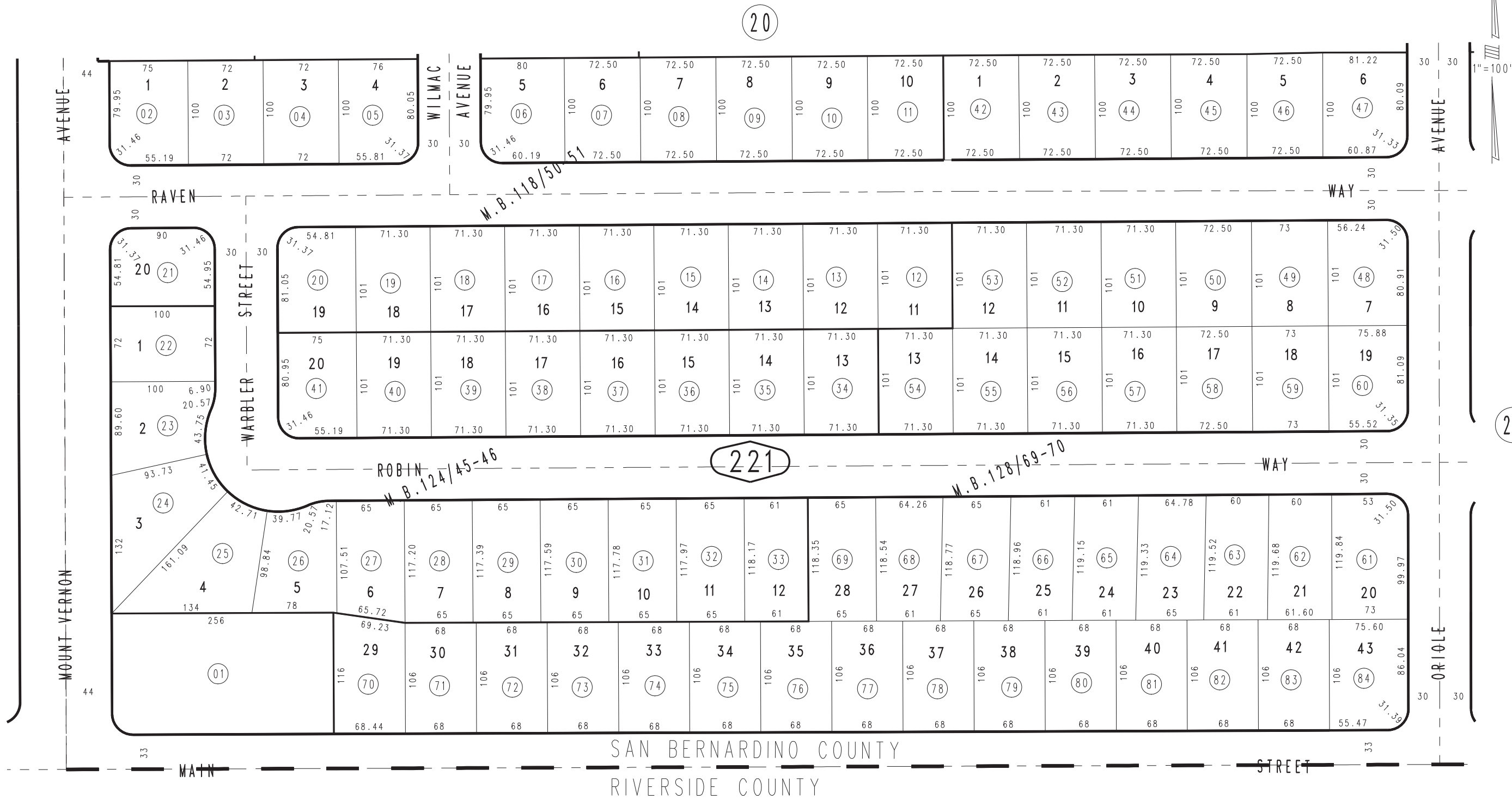
THIS MAP IS FOR THE PURPOSE  
OF AD VALOREM TAXATION ONLY.

Ptn. S.W.1/4 Sec. 4, T.2S.,R.4W. S.B.M.

City of Grand Terrace 1178 - 22  
Tax Rate Area  
16001



1167  
38



MARCH 1998

Tract No. 9170, M.B. 127/87-88, Amending Map, M.B. 128/69-70  
Tract No. 8842, M.B. 124/45-46  
Tract No. 7396, M.B. 118/50-51

Assessor's Map  
Book 1178 Page 22  
San Bernardino County

REVISED  
02/25/10 LH