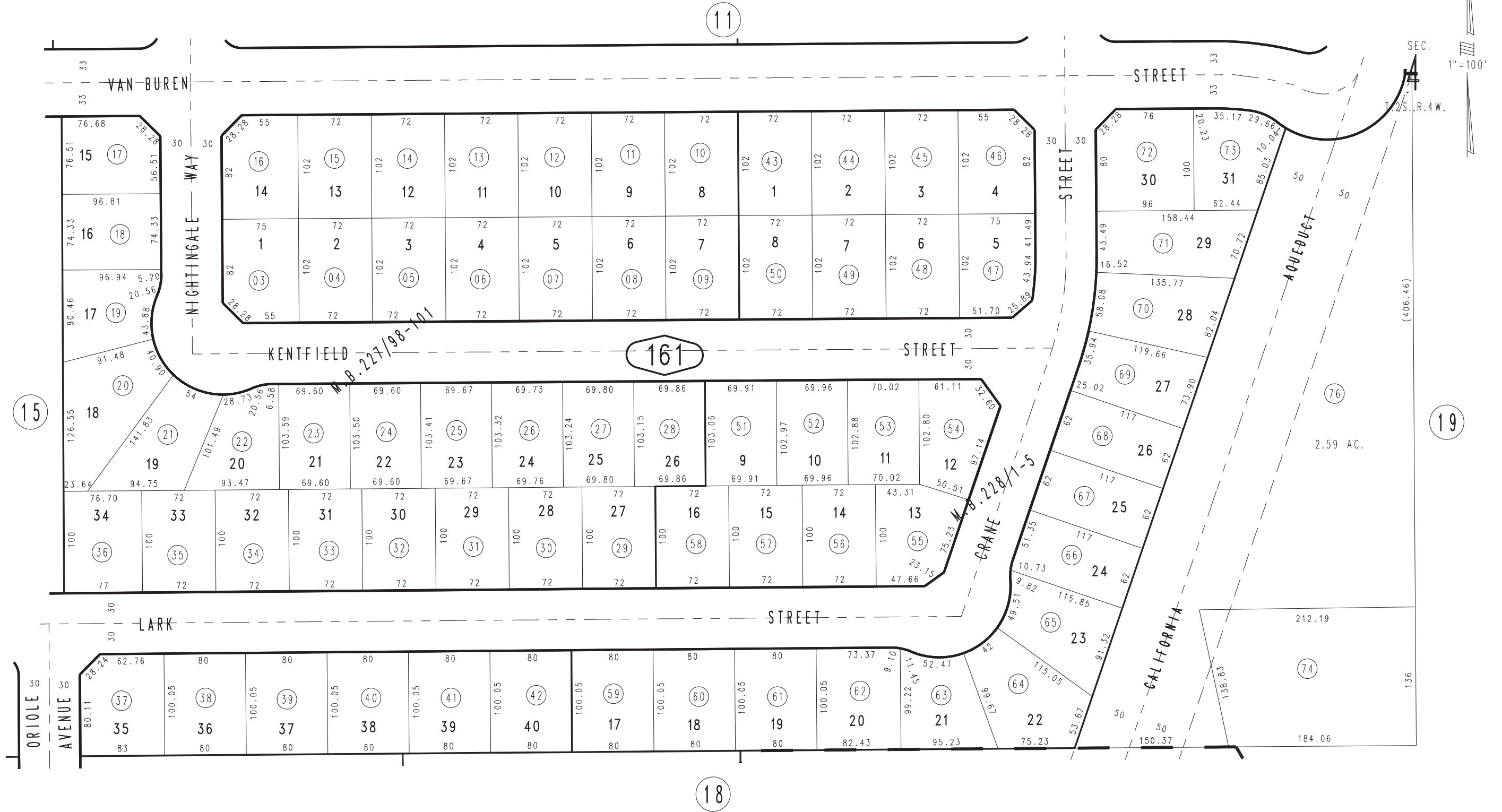


THIS MAP IS FOR THE PURPOSE OF AD VALOREM TAXATION ONLY.

Ptn. N.E.1/4, S.W.1/4 Sec. 4, T.2S.,R.4W. S.B.M.

City of Grand Terrace 1178 - 16
Tax Rate Area
16001



MARCH 1998

Tract No. 13050-6, M.B. 228/1-5
Tract No. 13050-5, M.B. 227/98-101

Assessor's Map
Book 1178 Page 16
San Bernardino County

REVISED
02/25/10 LH