

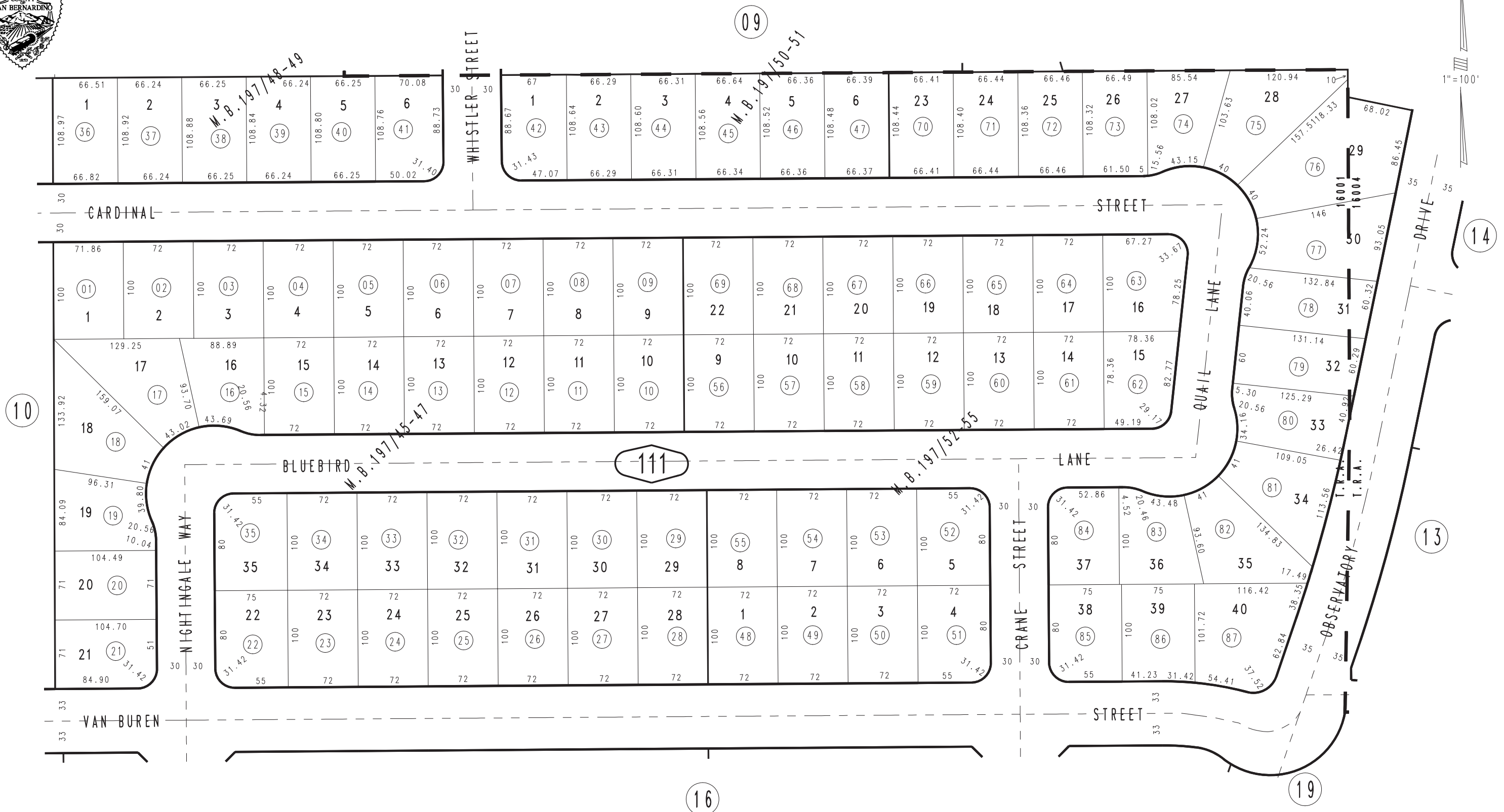
THIS MAP IS FOR THE PURPOSE OF AD VALOREM TAXATION ONLY.

Tract No. 13050-1, M.B. 197/45-47

City of Grand Terrace 1178 - 11
Tax Rate Area
16001 16004



1"=100'



MARCH 1998

Tract No. 13050-4, M.B. 197/52-55
Tract No. 13050-3, M.B. 197/50-51
Tract No. 13050-2, M.B. 197/48-49

Ptn. N.W.1/4, Sec. 4
T.2S., R.4W.

Assessor's Map
Book 1178 Page 11
San Bernardino County

REVISED
3-9-98 AL