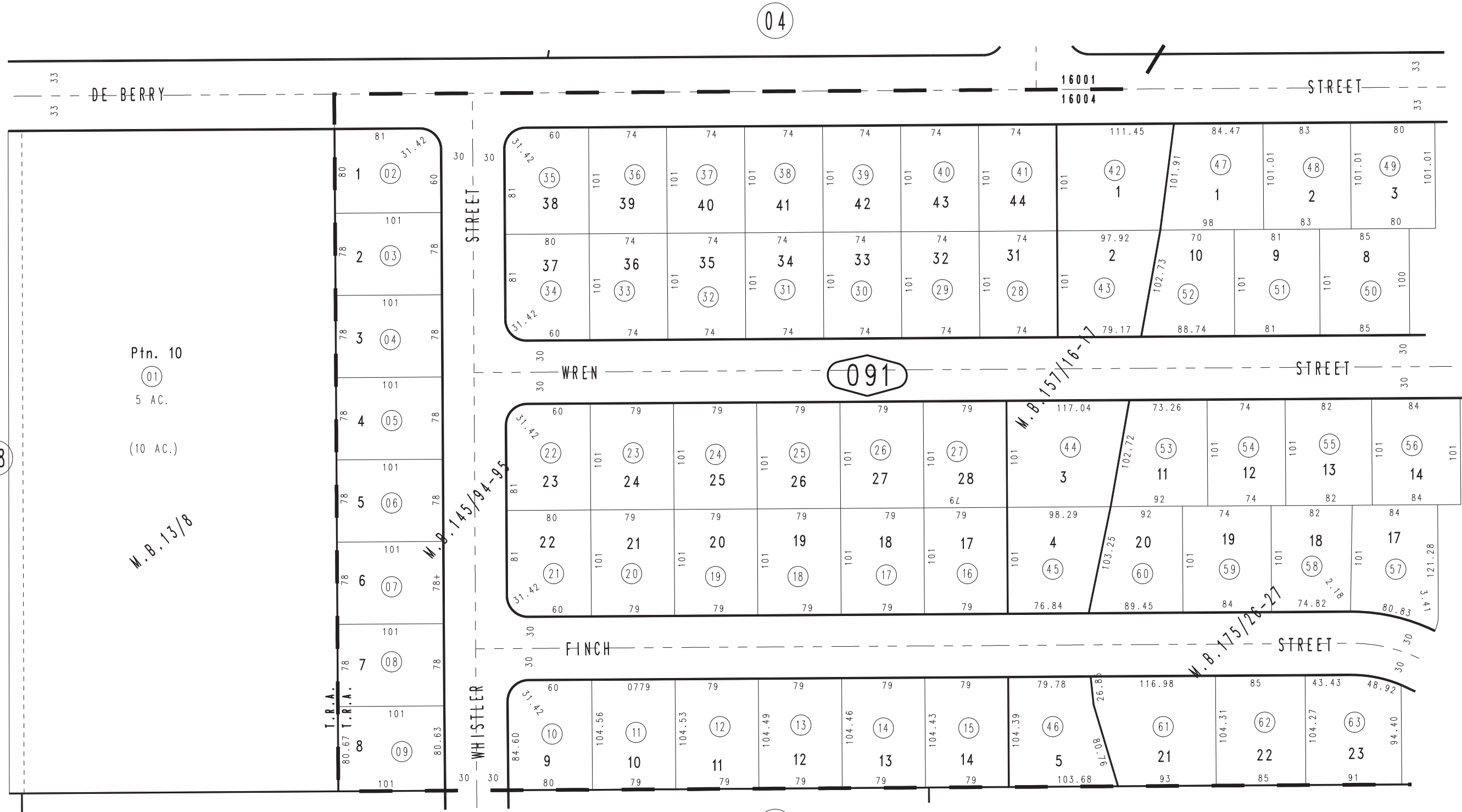


THIS MAP IS FOR THE PURPOSE
OF AD VALOREM TAXATION ONLY.

Ptn. Dixon Tract, M.B. 13/8

City of Grand Terrace 1178 - 09
Tax Rate Area
16001 16004



08

12

11

MARCH 1998

Ptn. Tract No. 9773-1, M.B 175/26-27
Tract No. 11847, M.B. 157/16-17
Tract No. 9625, M.B. 145/94-95

Ptn. N.W.1/4, Sec. 4
T.2S., R.4W.

Assessor's Map
Book 1178 Page 09
San Bernardino County

REVISED
3-9-98 AL