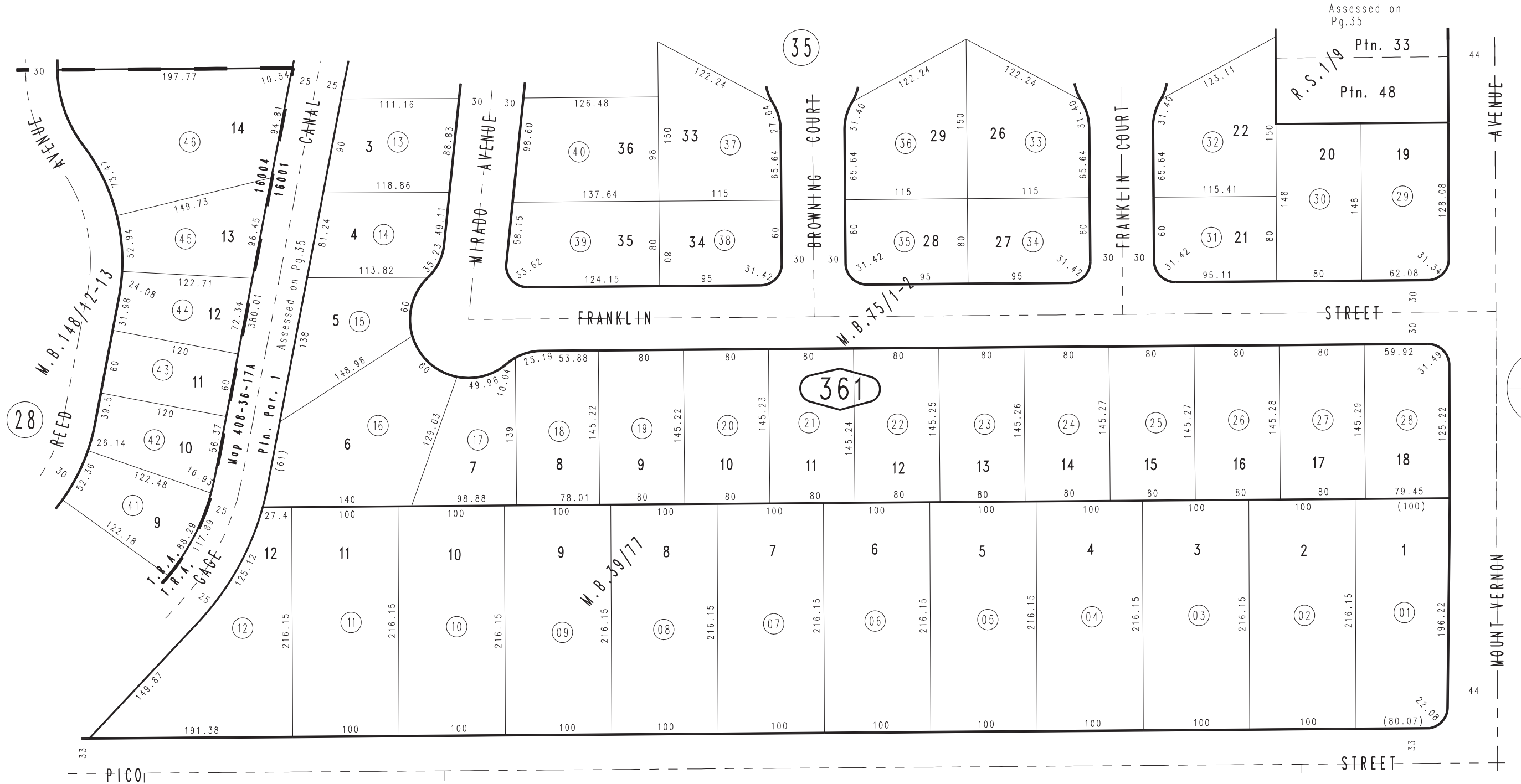


THIS MAP IS FOR THE PURPOSE OF AD VALOREM TAXATION ONLY.

Ptn. Holbrook Tract, Record of Survey, R.S. 1/9

City of Grand Terrace 1167 - 36
Tax Rate Area
16001,16004



Ptn. Tract No. 9741, M.B. 148/12-13
Ptn. Tract No. 4291, M.B. 75/1-2
Tract No. 2895, Asher Tract, M.B. 39/77

Ptn. S.E.1/4, Sec. 5
T.2S., R.4W.

Assessor's Map
Book 1167 Page 36
San Bernardino County

REVISED
07/06/98 AL

JULY 1998