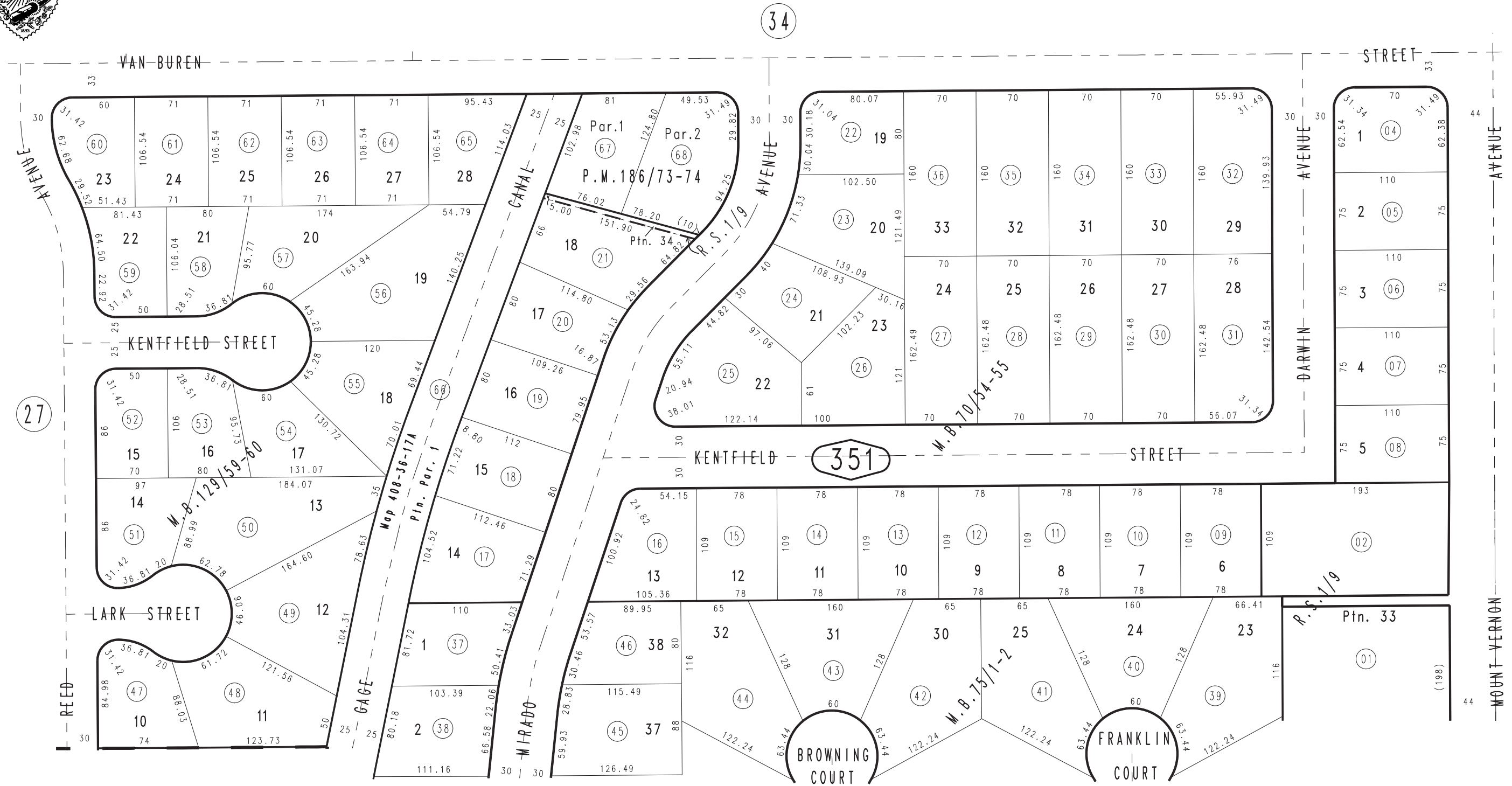


THIS MAP IS FOR THE PURPOSE OF AD VALOREM TAXATION ONLY.

# Ptn. Holbrook Tract, Record of Survey, R.S. 1/9

City of Grand Terrace 1167 - 35  
Tax Rate Area  
16001



1178  
15

Parcel Map No. 14911, P.M. 186/73-74  
Ptn. Tract No. 4291, M.B. 75/1-2  
Ptn. Tract No. 9251, M.B. 129/59-60  
Tract No. 5382, M.B. 70/54-55

JULY 1998

Ptn. S.E.1/4, Sec. 5  
T.2S., R.4W.

Assessor's Map  
Book 1167 Page 35  
San Bernardino County

REVISED  
07/15/11 BK-MC