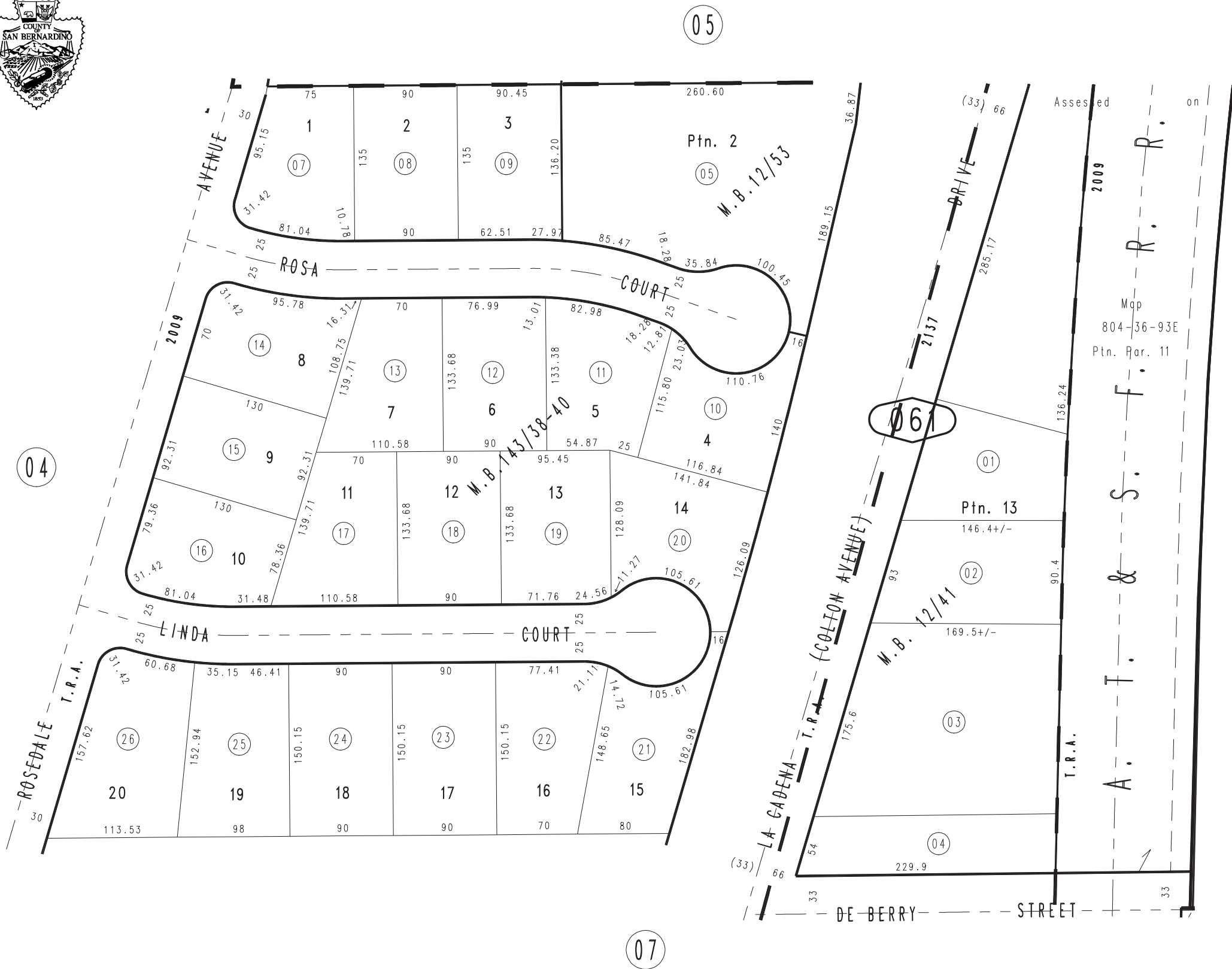
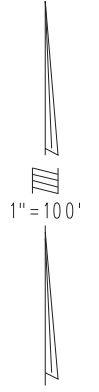


THIS MAP IS FOR THE PURPOSE
OF AD VALOREM TAXATION ONLY.

Ptn. Rosedale Tract, M.B. 12/41

City of Colton
Tax Rate Area
2009,2137

1167 - 06



0275
34

MAY 1998

Ptn. Tract No. 10025, M.B. 143/38-40
Ptn. Merryfield's Subdivision, M.B. 12/53

Ptn. N.E.1/4, Sec. 6
T.2S., R.4W.

Assessor's Map
Book 1167 Page 06
San Bernardino County

REVISED
02/16/23 KA
10/19/23 RU