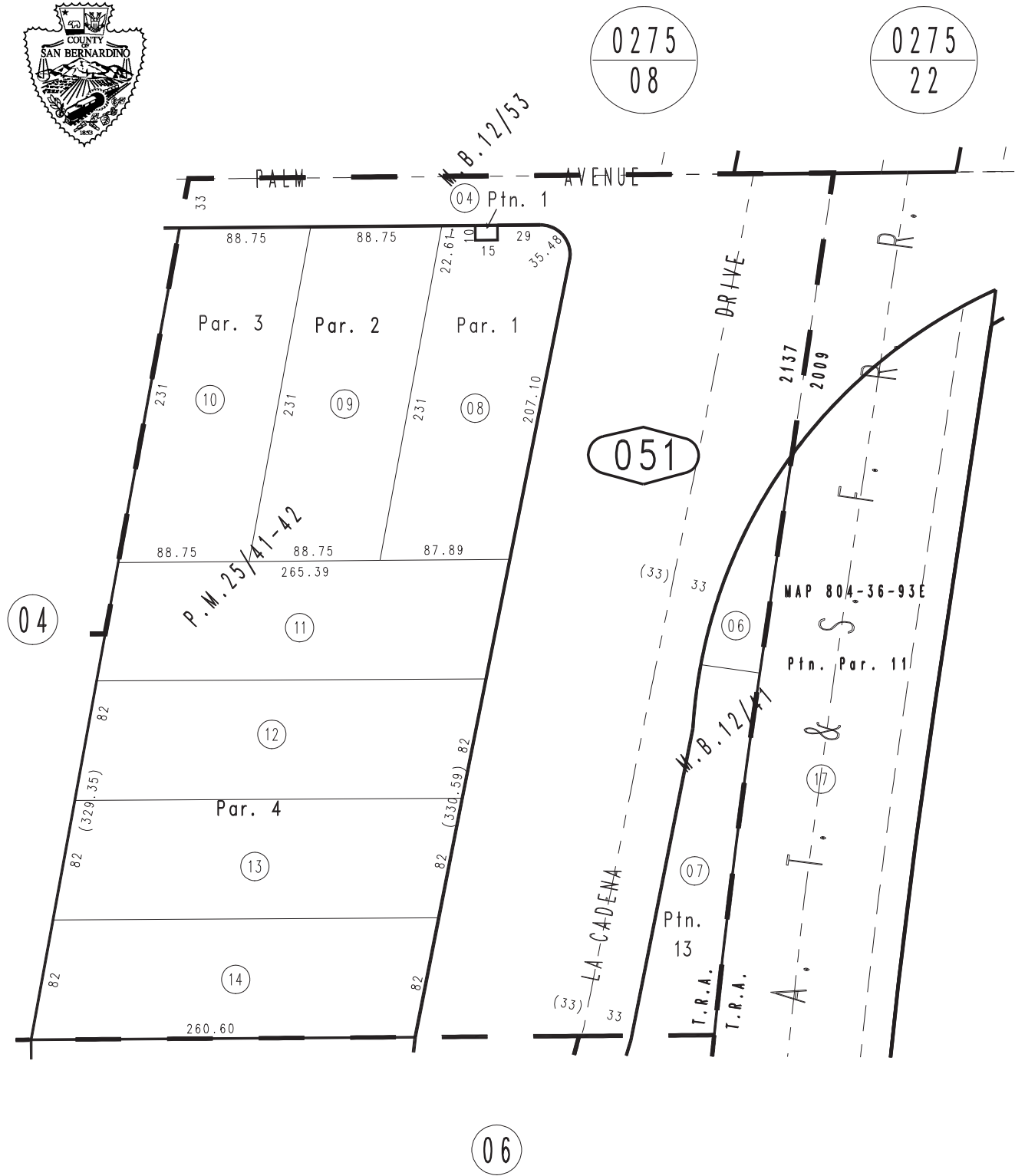


THIS MAP IS FOR THE PURPOSE  
OF AD VALOREM TAXATION ONLY.

Ptn. N.E.1/4 Sec.6, T.2S.,R.4W. S.B.M.

City of Colton  
Tax Rate Area  
2009,2137

1167 - 05



MAY 1998

Ptn. Merryfield's Subdivision, M.B. 12/53  
Ptn. Rosedale Tract, M.B. 12/41

Ptn. Parcel Map No. 2833, P.M. 25/41-42

Assessor's Map  
Book 1167 Page 05  
San Bernardino County

REVISED  
02/16/23 KA  
05/24/23 KA  
10/19/23 RU