

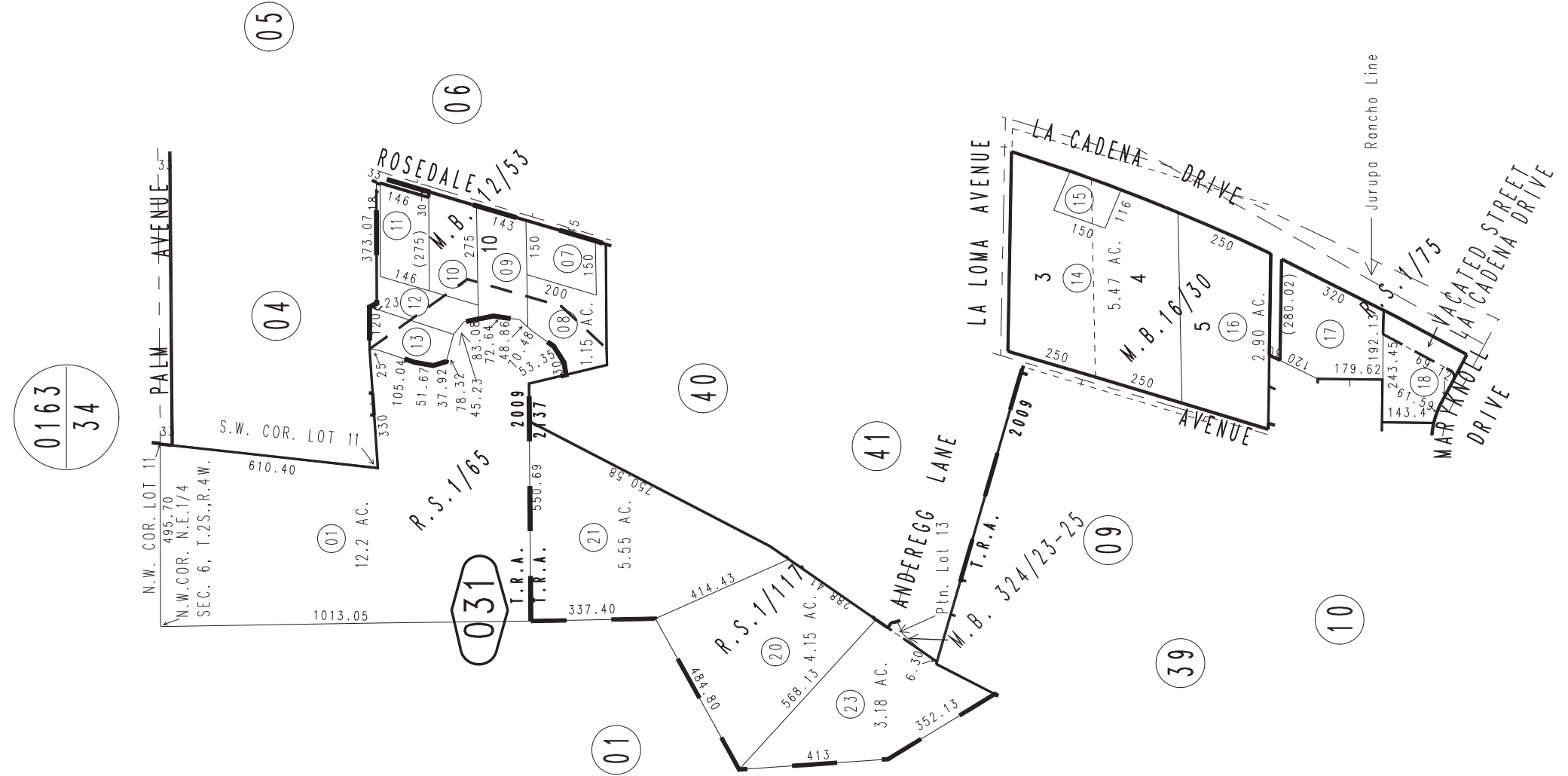
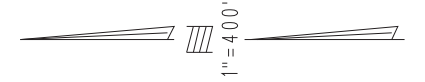
THIS MAP IS FOR THE PURPOSE
OF AD VALOREM TAXATION ONLY.



Ptn. E.1/2 Fract'l. Sec. 6, T.2S.,R.4W. S.B.M.
Ptn. Excelsior Land Company, R.S. 1/75

City of Colton
Tax Rate Area
2009,2137

1167 - 03



Ptn. Tract No. 16912, M.B. 324/23-25
Ptn. La Loma Subdivision, M.B. 16/30
Ptn. Merryfield's Subdivision, M.B. 12/53
Ptn. N.E.1/4 Sec.6, T.2S.,R.4W., R.S. 1/117
Ptn. La Loma Hills, R.S. 1/65

MAY 1998

Assessor's Map
Book 1167 Page 03
San Bernardino County

REVISED
02/24/10 LH
05/27/11 BK-MC
01/24/12 RU-MC
01/25/12 RU
09/12/12 RU