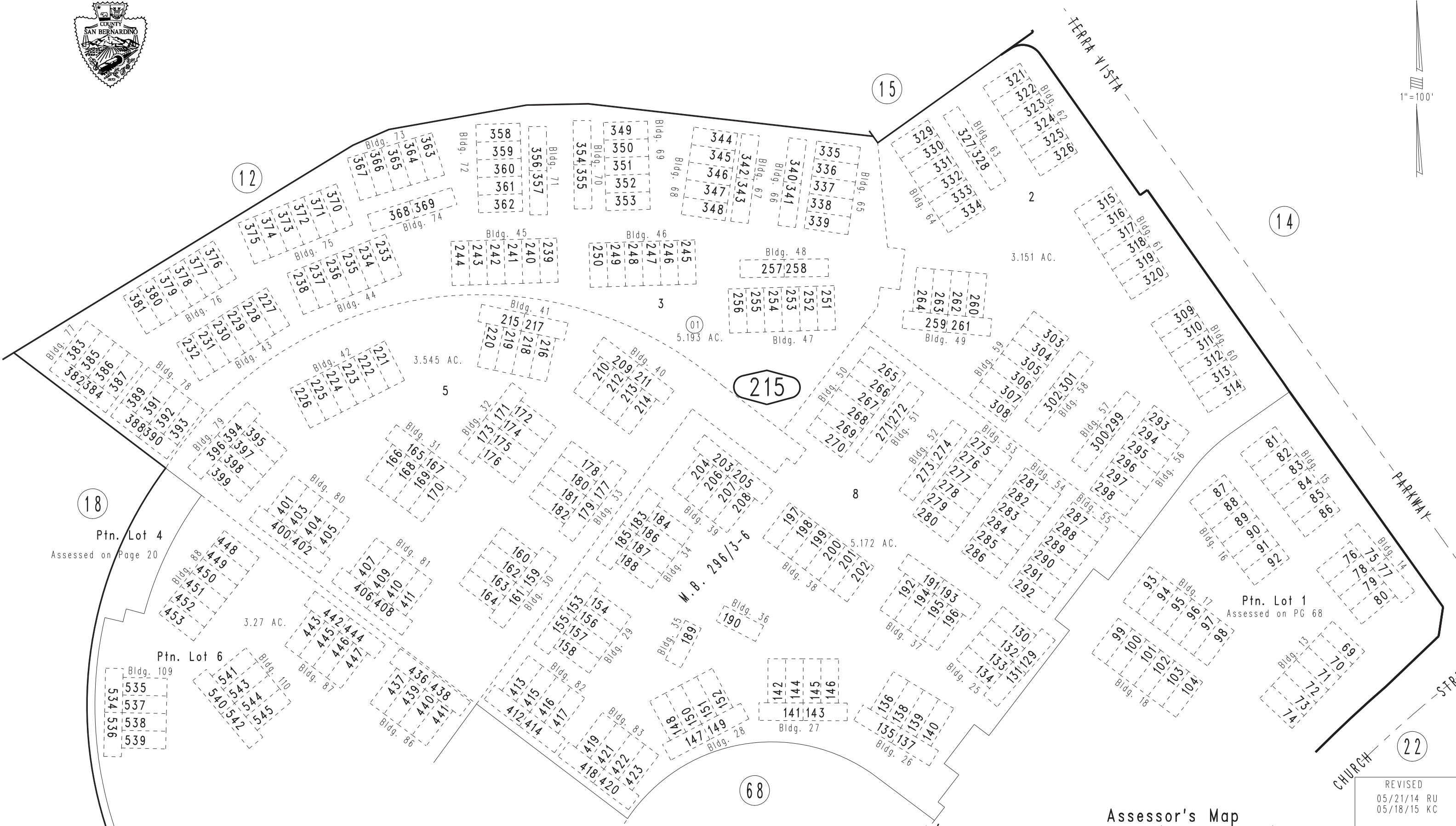


THIS MAP IS FOR THE PURPOSE OF AD VALOREM TAXATION ONLY.

Ptn. Tract No. 16157, M.B. 296/3-6 Condo Plan 2014-0081513

City of Rancho Cucamonga 1090 - 21
Tax Rate Area
15080



18
Ptn. Lot 4
Assessed on Page 20

Ptn. Lot 6

Ptn. Lot 1
Assessed on PG 68

68

Ptn. S.W.1/4, Sec. 6
T.1S., R.6W.

Assessor's Map
Book 1090 Page 21
San Bernardino County

REVISED
05/21/14 RU
05/18/15 KC