

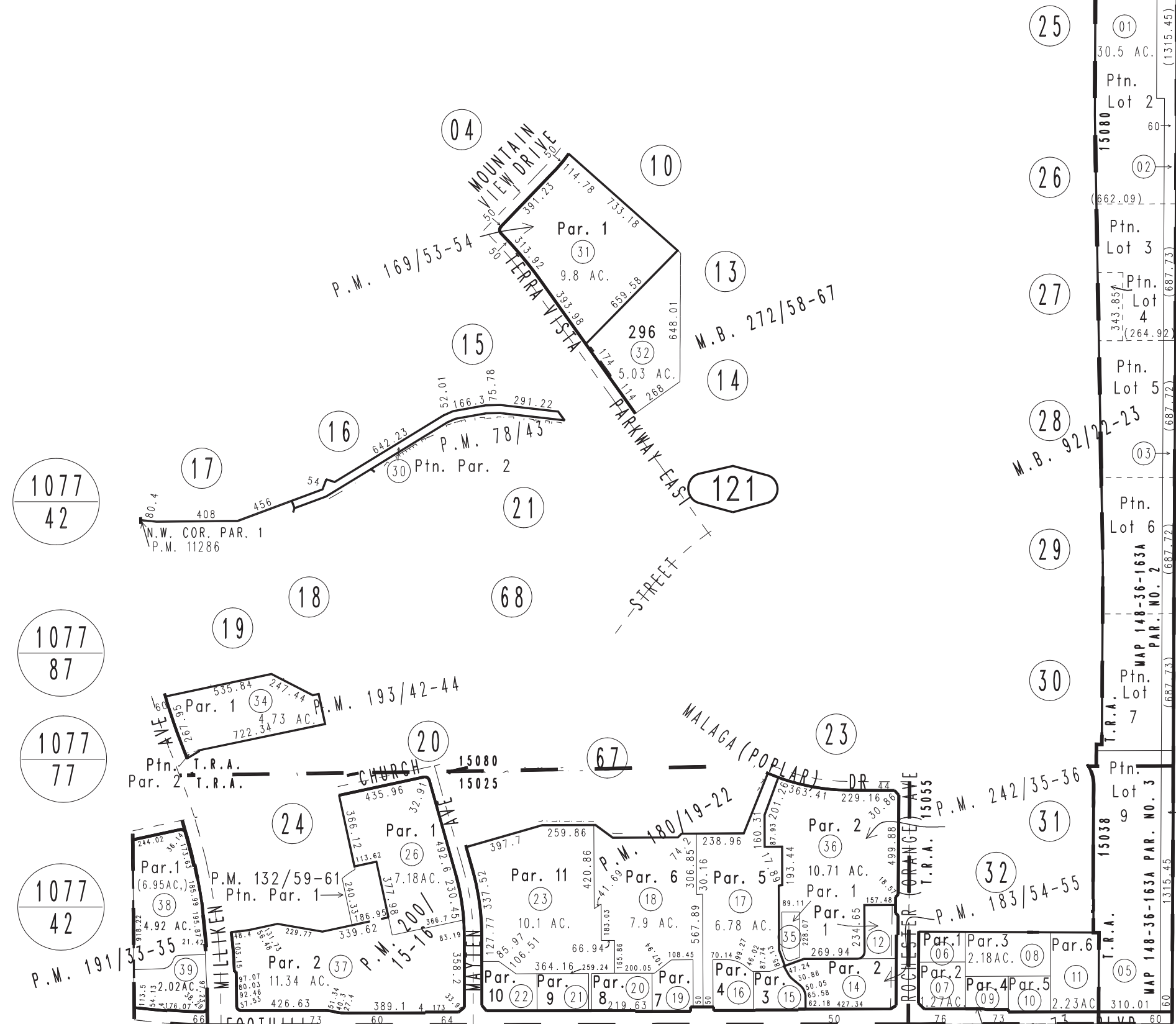
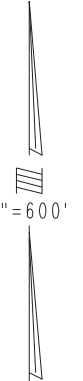
THIS MAP IS FOR THE PURPOSE OF AD VALOREM TAXATION ONLY.



Sec.6, T.1S.,R.6W., S.B.B.&M.
R.S. 1/116

1089
03

CITY OF RANCHO CUCAMONGA 1090 - 12
Tax Rate Area
15025 15038 15055 15080



1077
42

1077
87

1077
77

1077
42

0229
01

Parcel Map No. 11640, P.M. 169/53-54
Ptn. Parcel Map No. 11341, P.M. 132/59-61
Ptn. Parcel Map No. 7267, P.M. 78/43
Ptn. Tract No. 15072, M.B. 272/58-67
Ptn. Tract No. 7290, M.B. 92/22-23

Ptn. Parcel Map No. 15454, P.M. 191/29-32
Ptn. Parcel Map No. 15453, P.M. 191/26-28
Parcel Map No. 15016, P.M. 183/54-55
Ptn. Parcel Map No. 14022, P.M. 180/19-22

Parcel Map No. 19433, P.M. 242/35-36
Parcel Map No. 17594, P.M. 222/72-73
Parcel Map No. 15923, P.M. 200/15-16
Parcel Map No. 15349, P.M. 193/42-44
Ptn. Parcel Map No. 15455, P.M. 191/33-35

Assessor's Map
Book 1090 Page 12
San Bernardino County