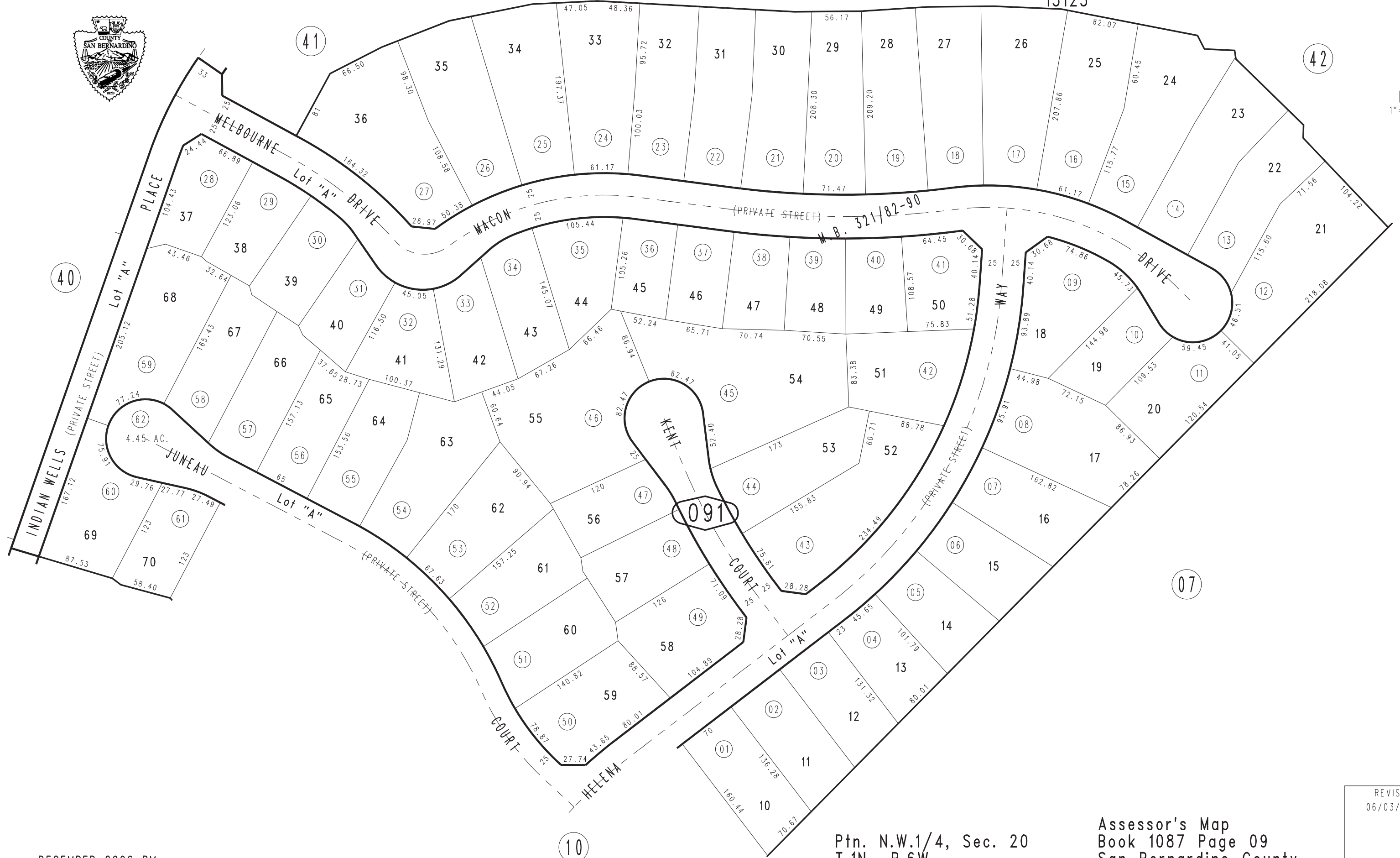


THIS MAP IS FOR THE PURPOSE OF AD VALOREM TAXATION ONLY.

Ptn. Tract No. 16226, M.B. 321/82-90

City of Rancho Cucamonga 1087 - 09
Tax Rate Area
15125



DECEMBER 2006 RM

Ptn. N.W.1/4, Sec. 20
T.1N., R.6W.

Assessor's Map
Book 1087 Page 09
San Bernardino County

REVISED
06/03/15 RM