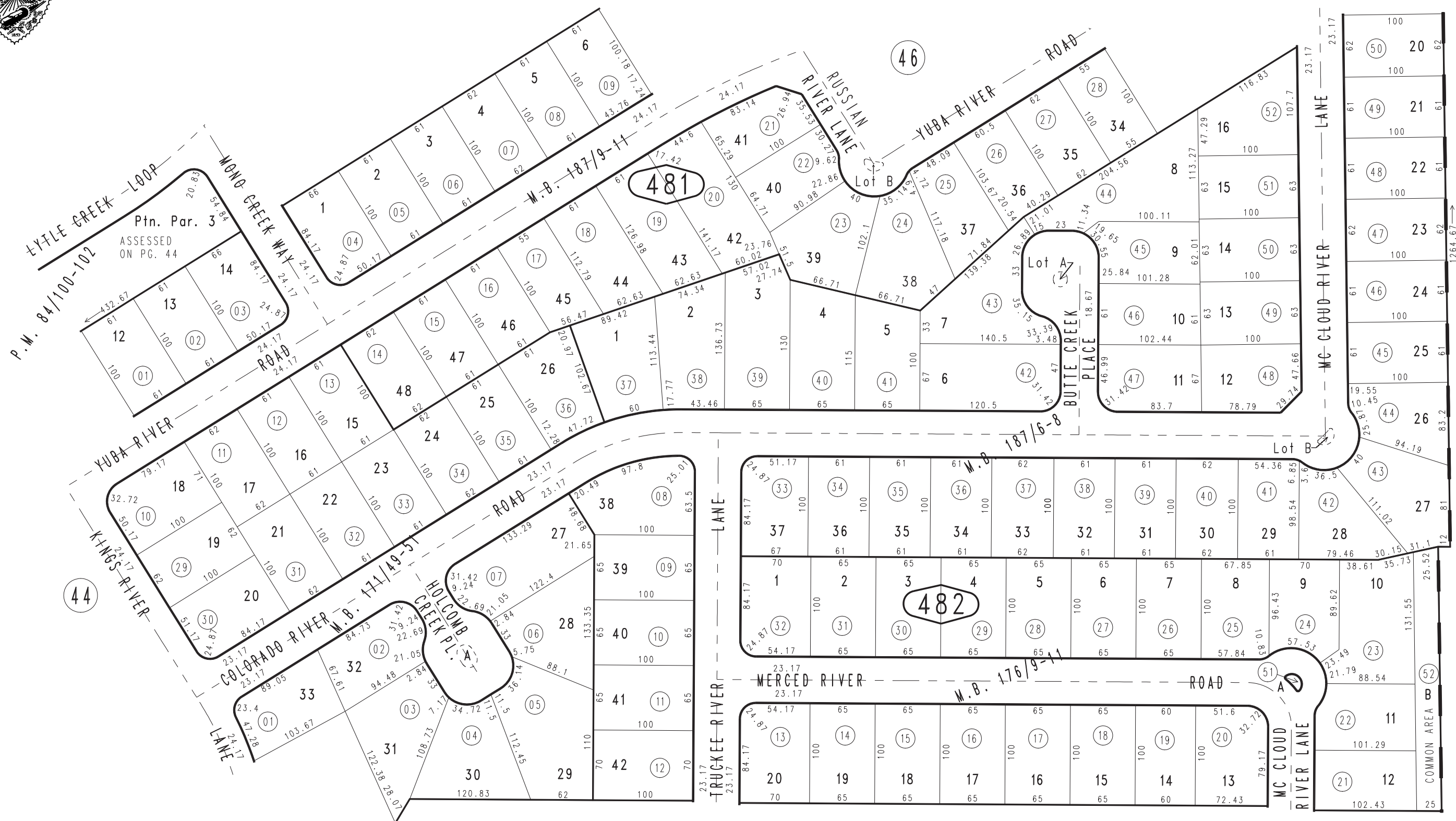


THIS MAP IS FOR THE PURPOSE OF AD VALOREM TAXATION ONLY.

Ptn. Tract No. 12516, M.B. 171/49-51

City of Ontario  
Tax Rate Area  
4029

1083 - 48



Tract No. 12072, M.B. 187/9-11  
Ptn. Tract No. 12517, M.B. 187/6-8  
Tract No. 12073, M.B. 176/9-11  
Ptn. Parcel Map No. 8231, P.M. 84/100-102

JULY 2008 LH

49

Ptn. S.E.1/4, Sec.1  
T.2S.,R.7W.

Assessor's Map  
Book 1083 Page 48  
San Bernardino County

REVISED