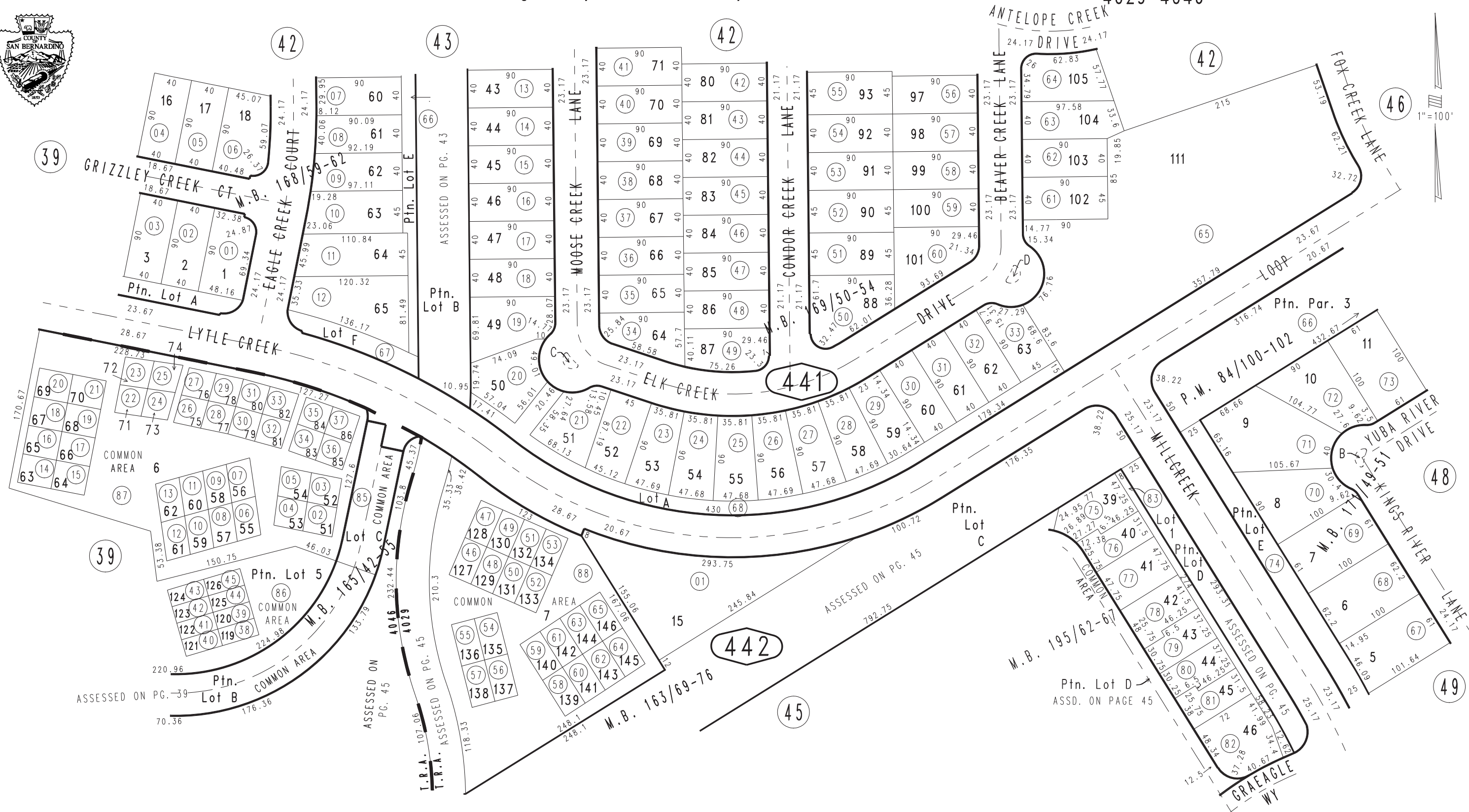


THIS MAP IS FOR THE PURPOSE OF AD VALOREM TAXATION ONLY.

# Ptn. Tract No. 11792, M.B. 160/1-8 Amending Map, M.B. 163/69-76

City of Ontario  
Tax Rate Area  
4029 4046

1083 - 44



Ptn. Tract No. 12794, M.B. 195/62-67  
Ptn. Tract No. 12516, M.B. 171/49-51  
Ptn. Tract No. 12336, M.B. 169/50-54  
Ptn. Tract No. 12335, M.B. 168/59-62  
Ptn. Parcel Map No. 8231, P.M. 84/100-102  
Ptn. Tract No. 12169, M.B. 165/42-55, Condo. Plans 83-0237487, 84-0100765, 84-0100762

JULY 2008 LH

Ptn. S.W.1/4, Sec.1  
T.2S.,R.7W.

Assessor's Map  
Book 1083 Page 44  
San Bernardino County

REVISED  
04/27/11 RM