

THIS MAP IS FOR THE PURPOSE OF AD VALOREM TAXATION ONLY.



Ptn. Tract No. 10999, M.B. 154/73-76

City of Ontario
Tax Rate Area
4029 4081 4082

1083 - 33

AVENUE

16

17

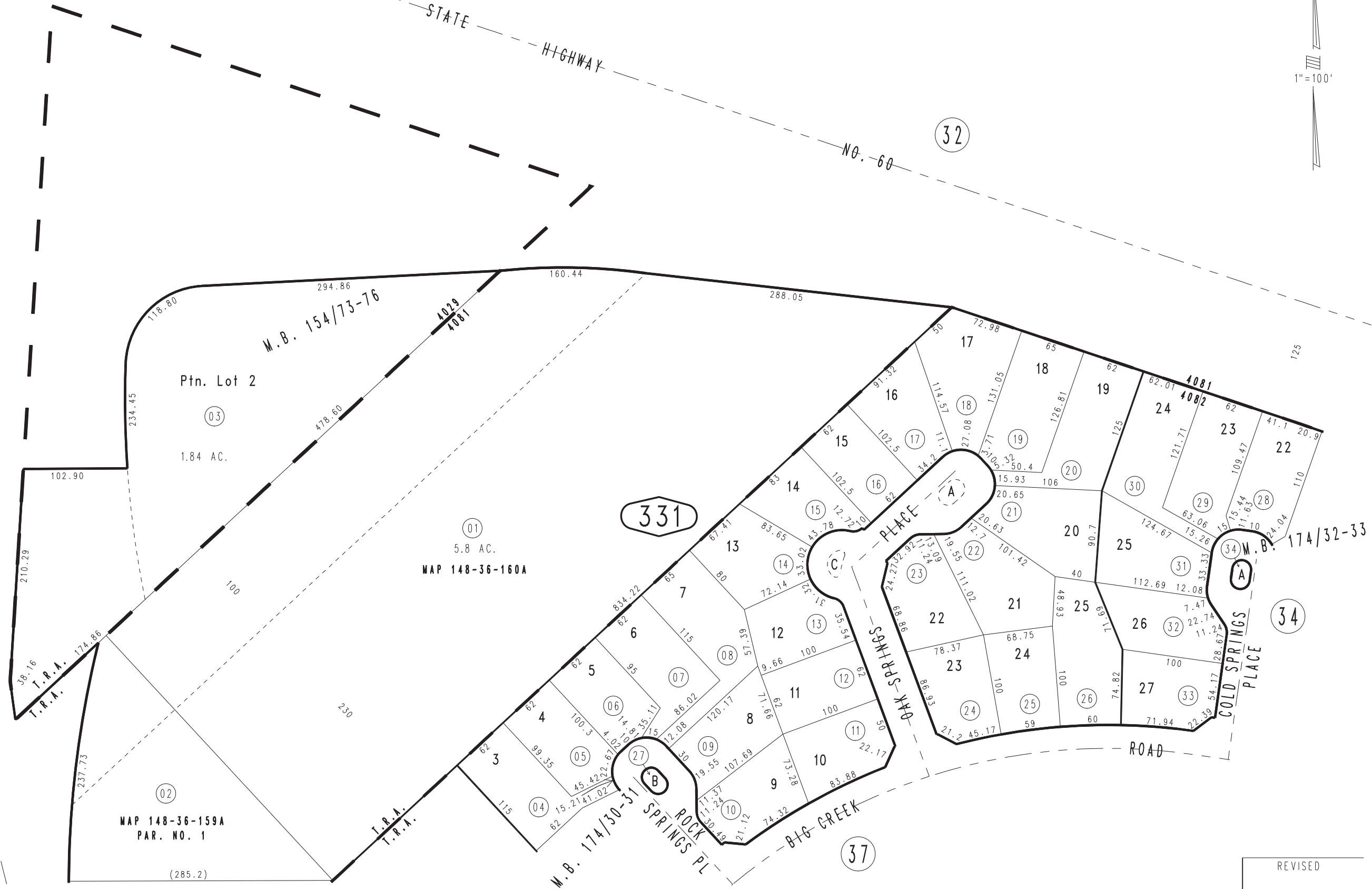
W.1/4 COR. SEC.1
T.2S.,R.7W.

STATE
HIGHWAY

NO. 60

32

1"=100'



Ptn. Tract No. 11001, M.B. 174/32-33
Ptn. Tract No. 11388, M.B. 174/30-31

Ptn. N.W.1/4, Sec.1
T.2S.,R.7W.

Assessor's Map
Book 1083 Page 33
San Bernardino County