

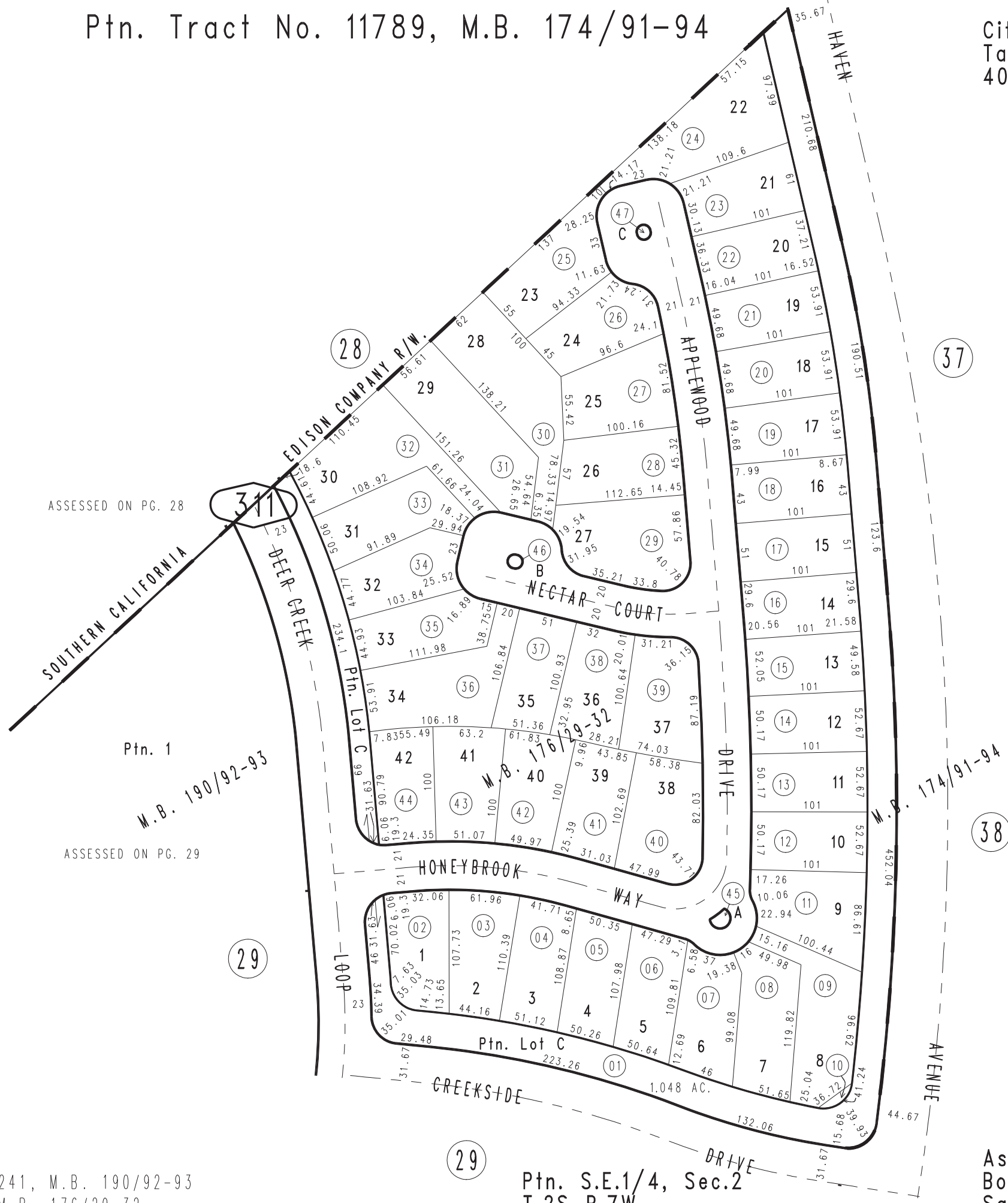
THIS MAP IS FOR THE PURPOSE
OF AD VALOREM TAXATION ONLY.



Ptn. Tract No. 11789, M.B. 174/91-94

City of Ontario
Tax Rate Area
4029

1083 - 31



ASSESSED ON PG. 28

Ptn. 1

M.B. 190/92-93

ASSESSED ON PG. 29

29

Ptn. S.E.1/4, Sec.2
T.2S.,R.7W.

Assessor's Map
Book 1083 Page 31
San Bernardino County

REVISED