

THIS MAP IS FOR THE PURPOSE OF AD VALOREM TAXATION ONLY.

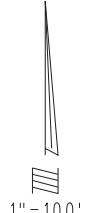
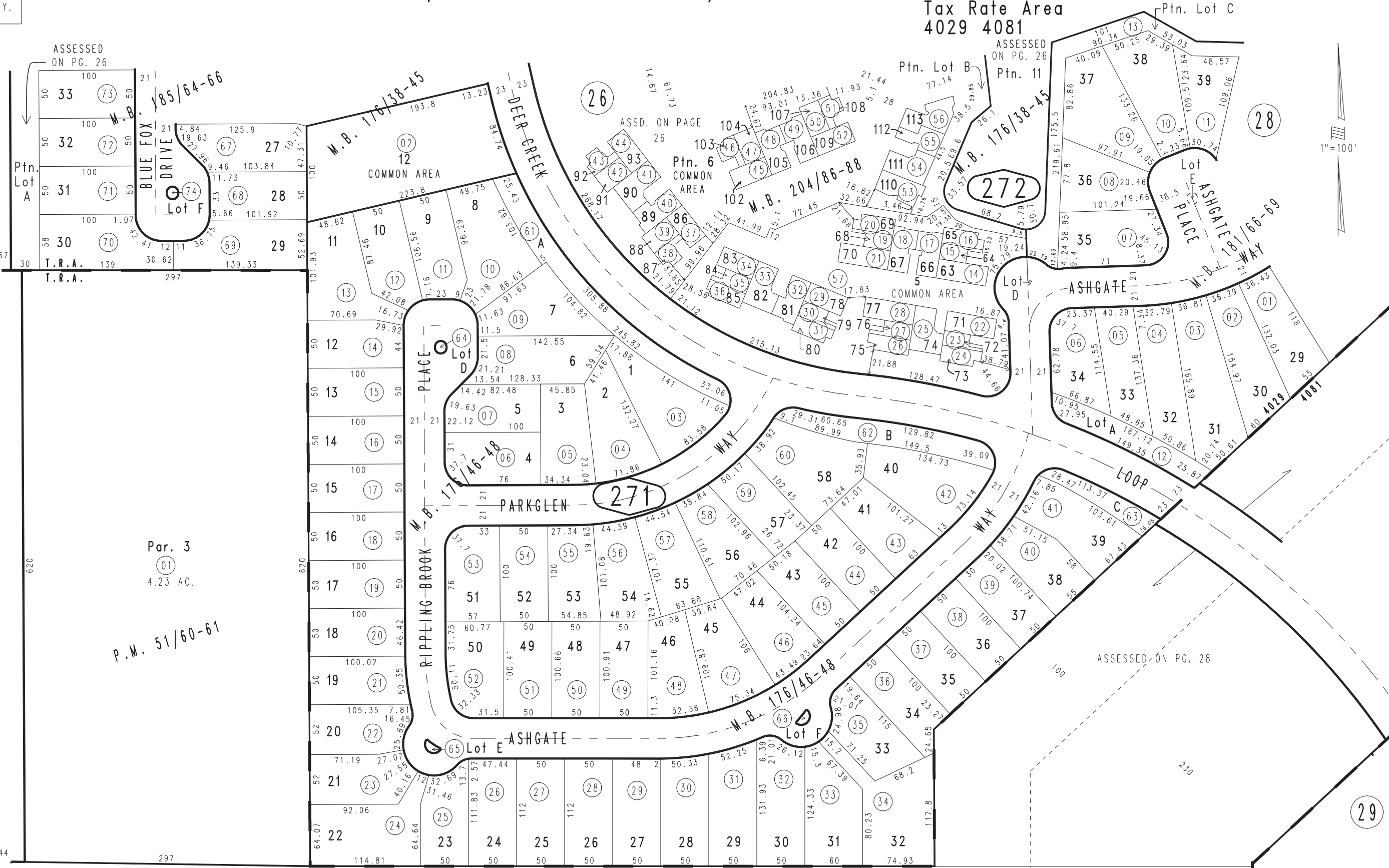
# Ptn. Parcel Map No. 5097, P.M. 51/60-61

City of Ontario  
Tax Rate Area  
4029 4081

1083 - 27



HERMOSA AVENUE (TURNER AVE)



Ptn. Tract No. 13588, M.B. 204/86-88, Condo. Plans 87-0431838 and 87-0431841  
Ptn. Tract No. 12789, M.B. 185/64-66  
Ptn. Tract No. 12971, M.B. 181/66-69  
Tract No. 12788, M.B. 176/46-48  
Ptn. Tract No. 12787, M.B. 176/38-45

15

Ptn. S.E.1/4, Sec.2  
T.2S.,R.7W.

Assessor's Map  
Book 1083 Page 27  
San Bernardino County

REVISED  
12/04/24 KC-MC