

THIS MAP IS FOR THE PURPOSE OF AD VALOREM TAXATION ONLY.

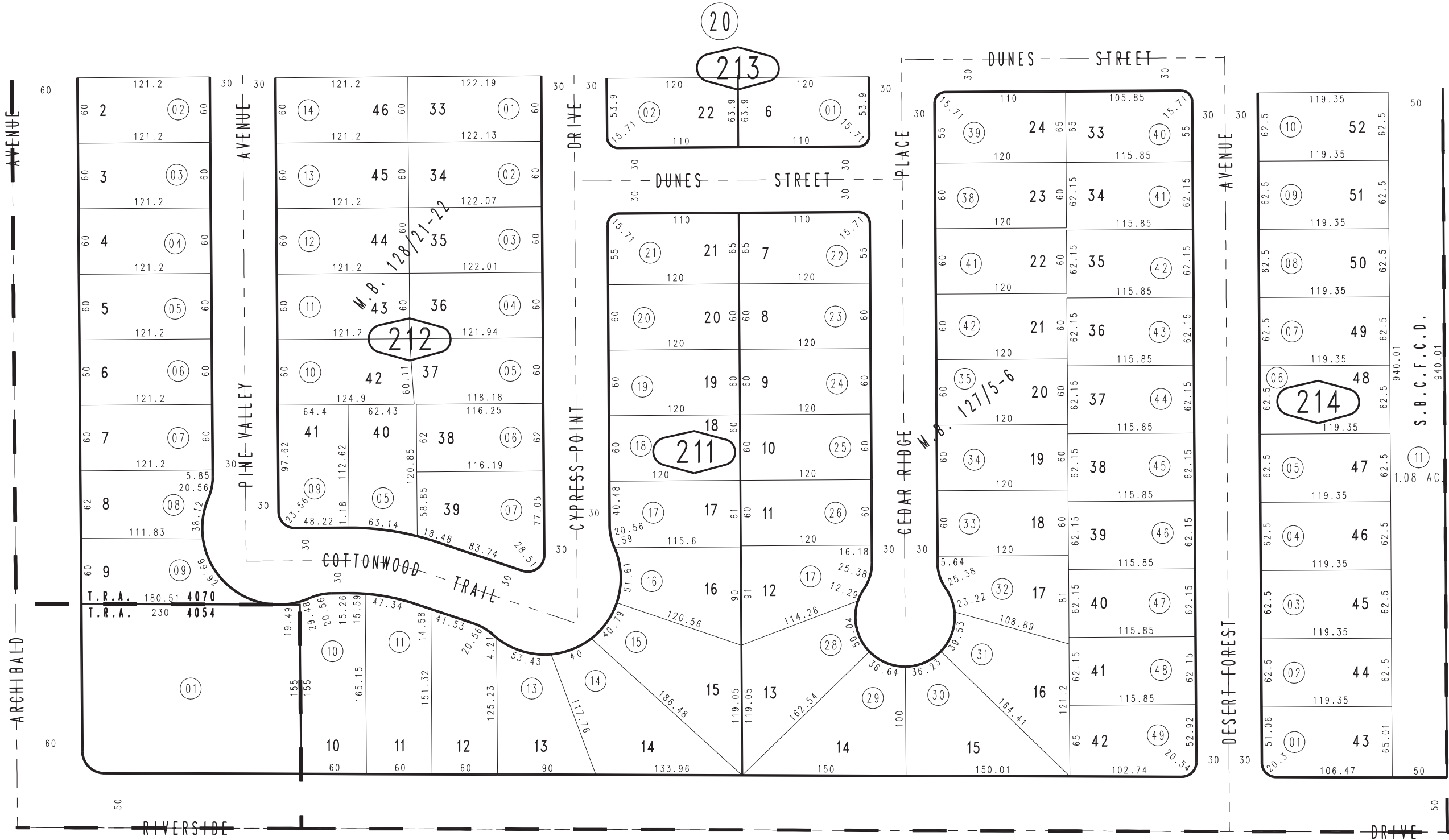
Ptn. S.1/2, S.W.1/4, S.W.1/4, Sec.2, T.2S.,R.7W.

City of Ontario
Tax Rate Area
4054,4070

1083 - 21



1"=100'



06

25

0218
14

JUNE 2008 LH

Ptn. Tract No. 9259, M.B. 128/21-22
Ptn. Tract No. 9238, M.B. 127/5-6

Assessor's Map
Book 1083 Page 21
San Bernardino County

REVISED
10/26/12 BK-MC