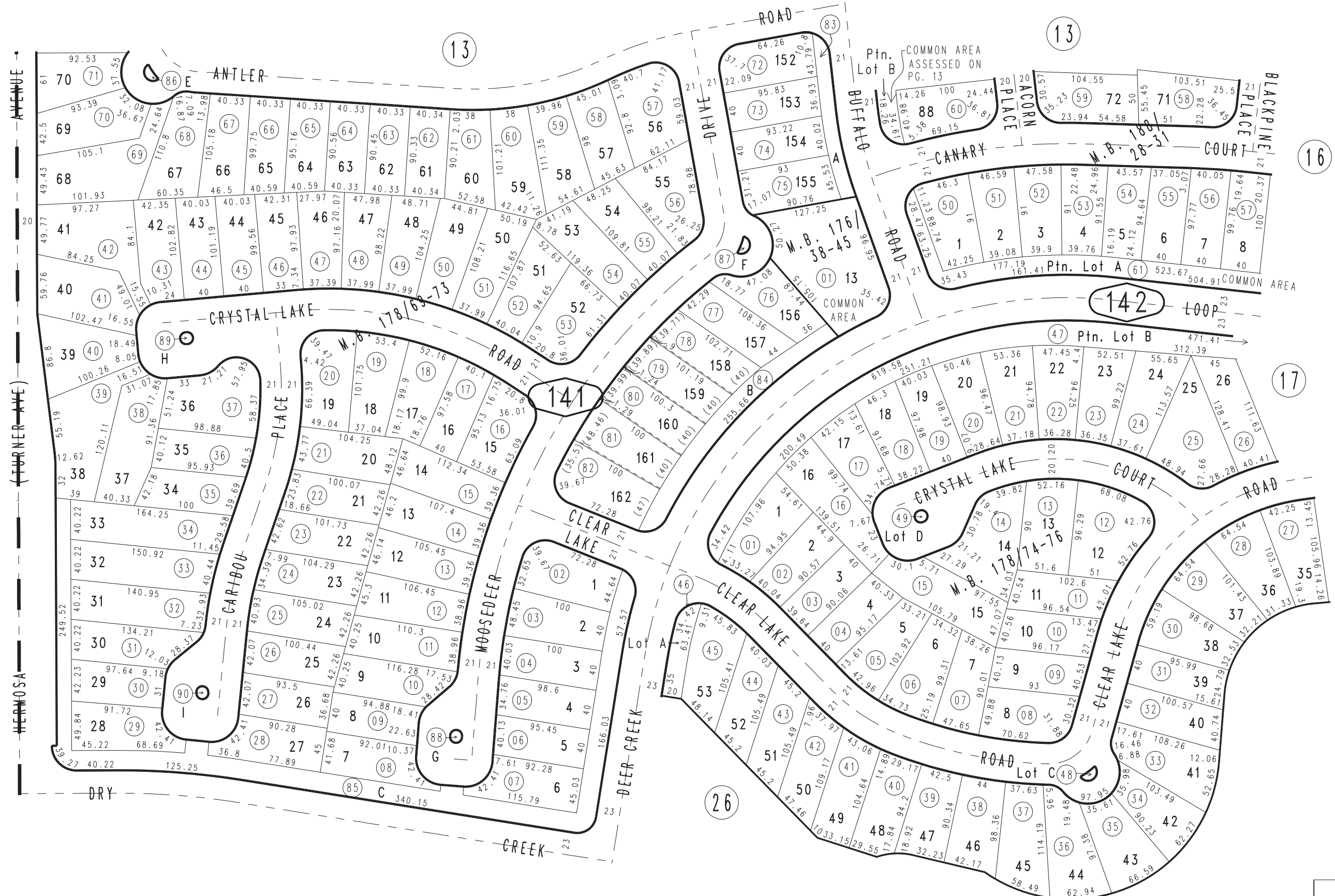


THIS MAP IS FOR THE PURPOSE OF AD VALOREM TAXATION ONLY.

Ptn. Tract No. 12787, M.B. 176/38-45

City of Ontario
Tax Rate Area
4029

1083 - 14



Ptn. Tract No. 12791, M.B. 188/28-31
Ptn. Tract No. 12790, M.B. 178/69-73
Ptn. Tract No. 12793, M.B. 178/74-76

JUNE 2008 LH

Ptn. S.E.1/4, Sec.2
T.2S.,R.7W.

Assessor's Map
Book 1083 Page 14
San Bernardino County

REVISED