

THIS MAP IS FOR THE PURPOSE
OF AD VALOREM TAXATION ONLY.

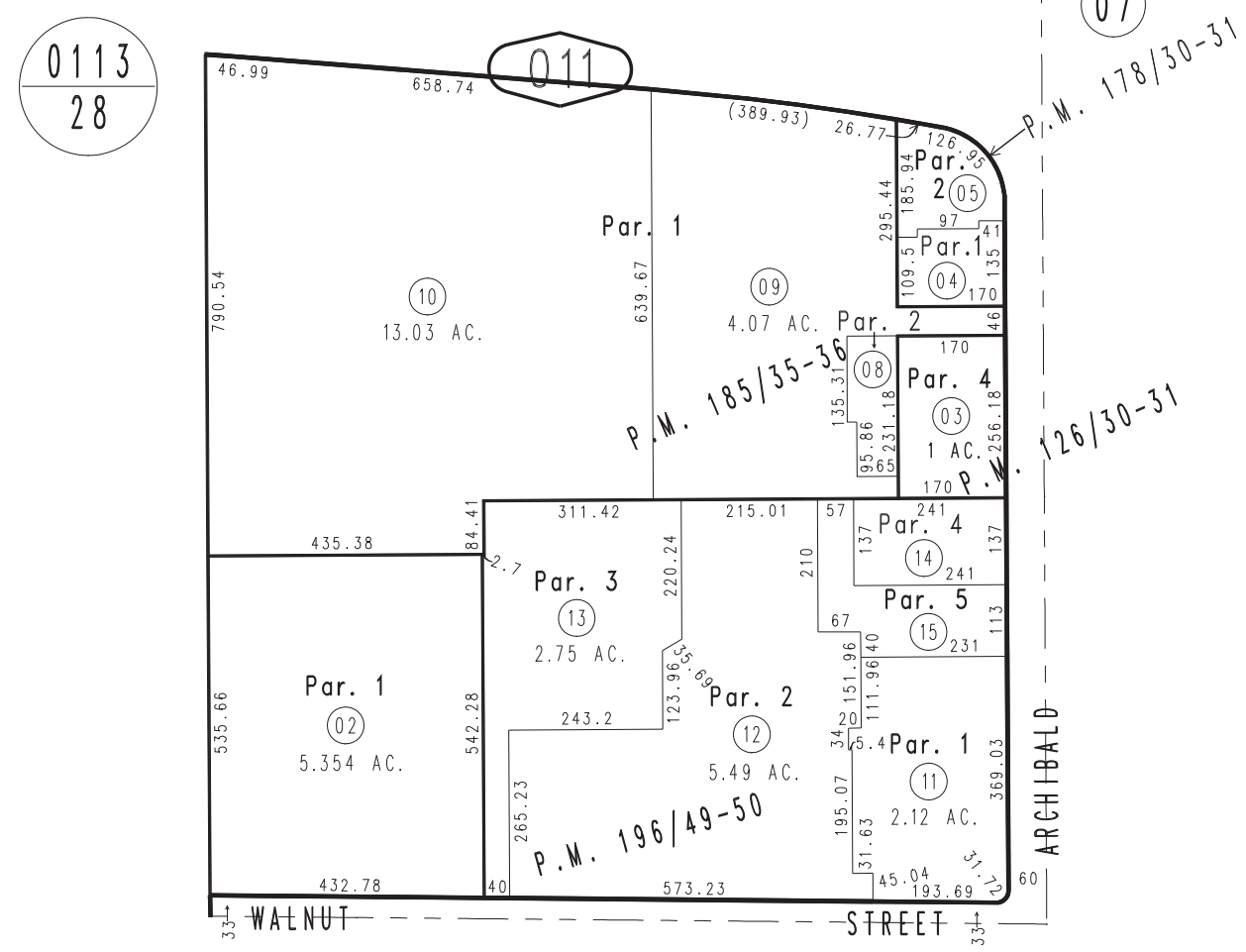
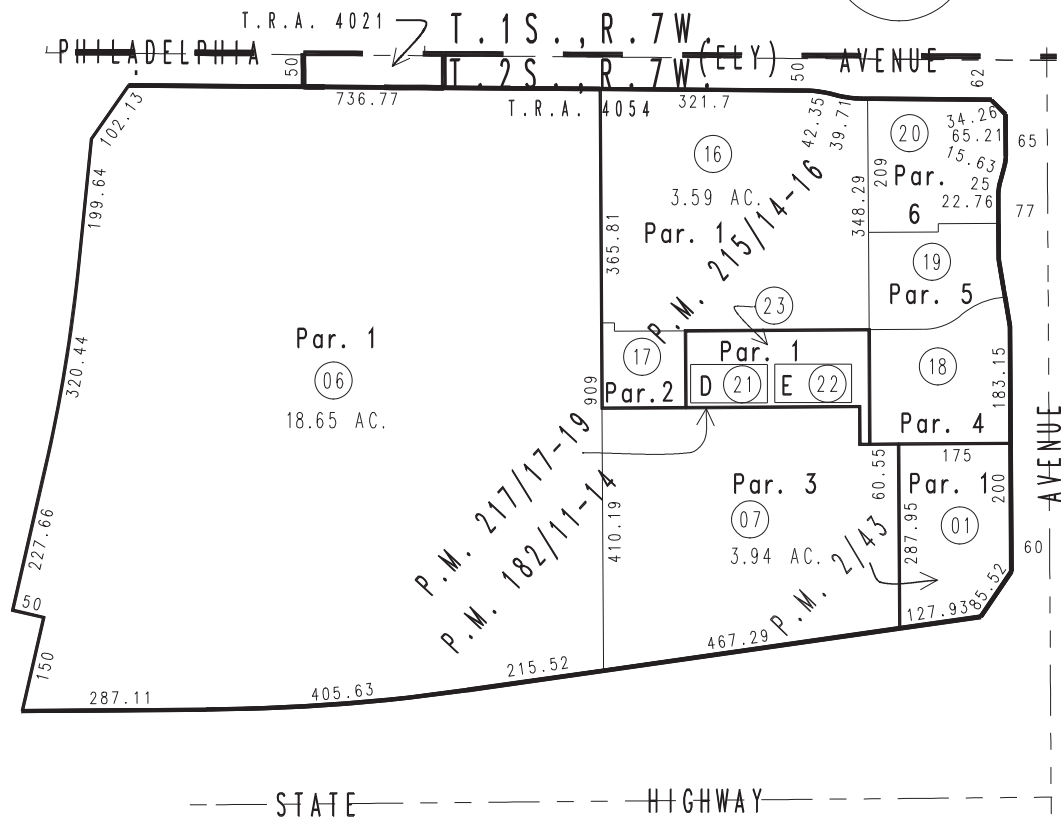
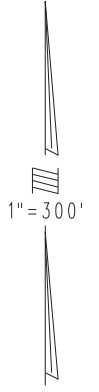


Parcel Map No. 139, P.M. 2/43

0211
24

City of Ontario
Tax Rate Area
4021,4054

1083 - 01



- Parcel Map No. 17812, P.M. 217/17-19
- Condo Plan, 06-0811769
- Ptn. Parcel Map No. 17184, P.M. 215/14-16
- Parcel Map No. 14801, P.M. 196/49-50
- Parcel Map No. 15109, P.M. 185/35-36
- Ptn. Parcel Map No. 14971, P.M. 182/11-14
- Parcel Map No. 14784, P.M. 178/30-31
- Ptn. Parcel Map No. 11017, P.M. 126/30-31

JUNE 2008 LH

02 Ptn. N.E.1/4, Sec. 3
T.2S., R.7W.

Assessor's Map
Book 1083 Page 01
San Bernardino County

REVISED