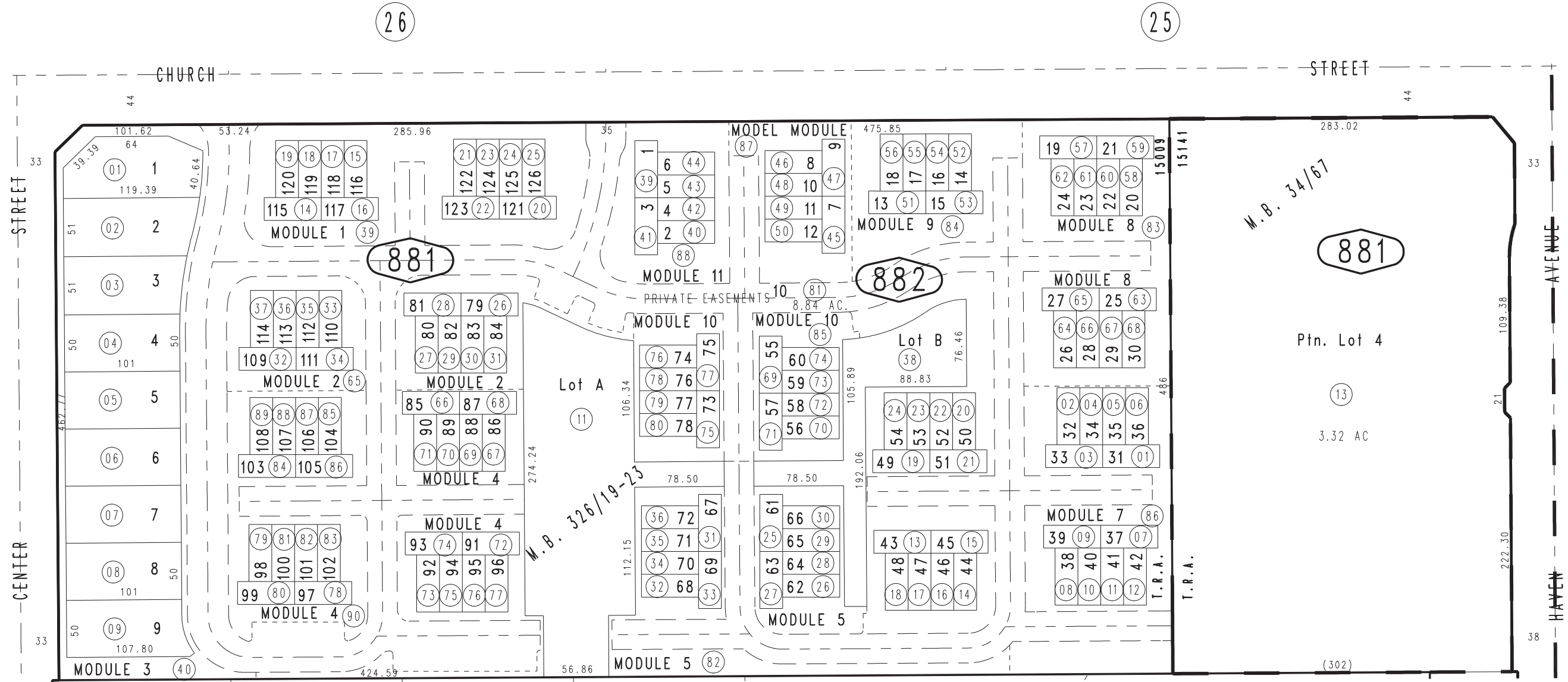


THIS MAP IS FOR THE PURPOSE OF AD VALOREM TAXATION ONLY.



Ptn. Tract No. 2022, M.B. 34/67

City of Rancho Cucamonga 1077 - 88
Tax Rate Area
15009 15141



- Condo Plan 08-0331774, Phase 11
- Condo Plan 08-0331773, Phase 10
- Condo Plan 08-0331772, Phase 9
- Condo Plan 08-0119783, Amended 08-0331775, Model Phase
- Condo Plan 08-0119782, Amended 08-0331771, Ptn. Phase 8 (See Phase 10 and 11)
- Condo Plan 08-0119781, Amended 08-0331770, Ptn. Phase 7 (See Phase 9)
- Condo Plan 08-0029177, Amended 08-0331769, Ptn. Phase 6 (See Phase 7)
- Condo Plan 08-0029175, Phase 5
- Condo Plan 08-0029173, Phase 4
- Condo Plan 07-0597945, Phase 2
- Condo Plan 07-0597944, Phase 1
- Tract No. 17435, M.B. 326/19-23

40

MAY 2007 KC

Ptn. S.E.1/4, Sec.2
T.1S.,R.7W.

Assessor's Map
Book 1077 Page 88
San Bernardino County

REVISED
06/07/23 GW