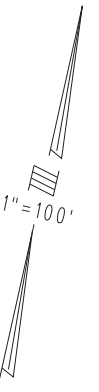
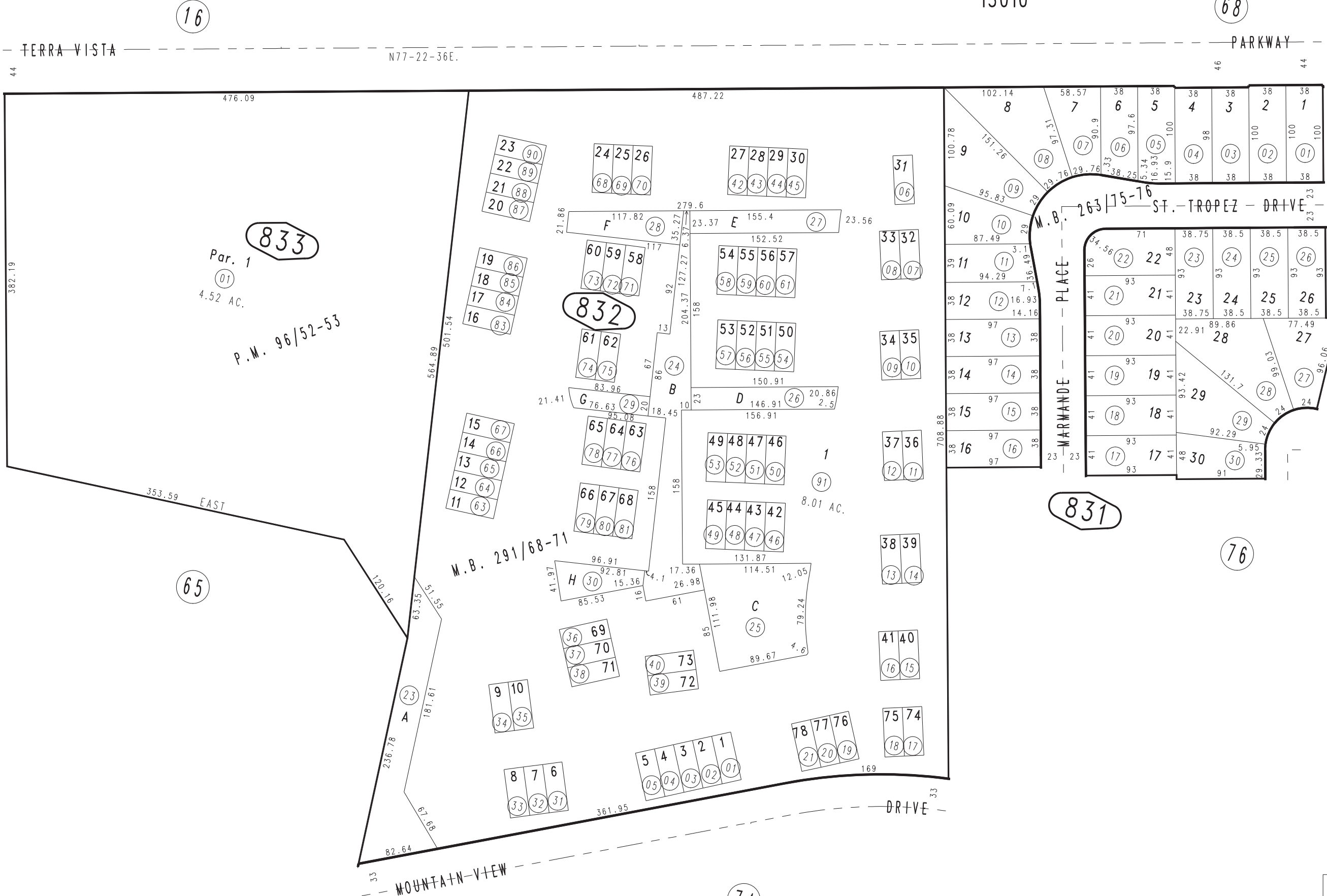


THIS MAP IS FOR THE PURPOSE
OF AD VALOREM TAXATION ONLY.

Ptn. Parcel Map No. 8842, P.M. 96/52-53

City of Rancho Cucamonga 1077 - 83
Tax Rate Area
15010



Tract No. 15724, M.B. 291/68-71, Condo Plans 03-0562452 Phase 1, 03-0562454
Phase 2, 03-562455 Phase 3, 03-0562456 Phase 4, 03-0562457 Phase 5
Tract No. 15725, M.B. 263/75-76

Ptn. NW 1/4, Sec. 1
T.1S., R.7W.

Assessor's Map
Book 1077 Page 83
San Bernardino County

REVISED
02/06/07 GL
07/18/08 LH
02/23/10 LH
07/12/11 LH