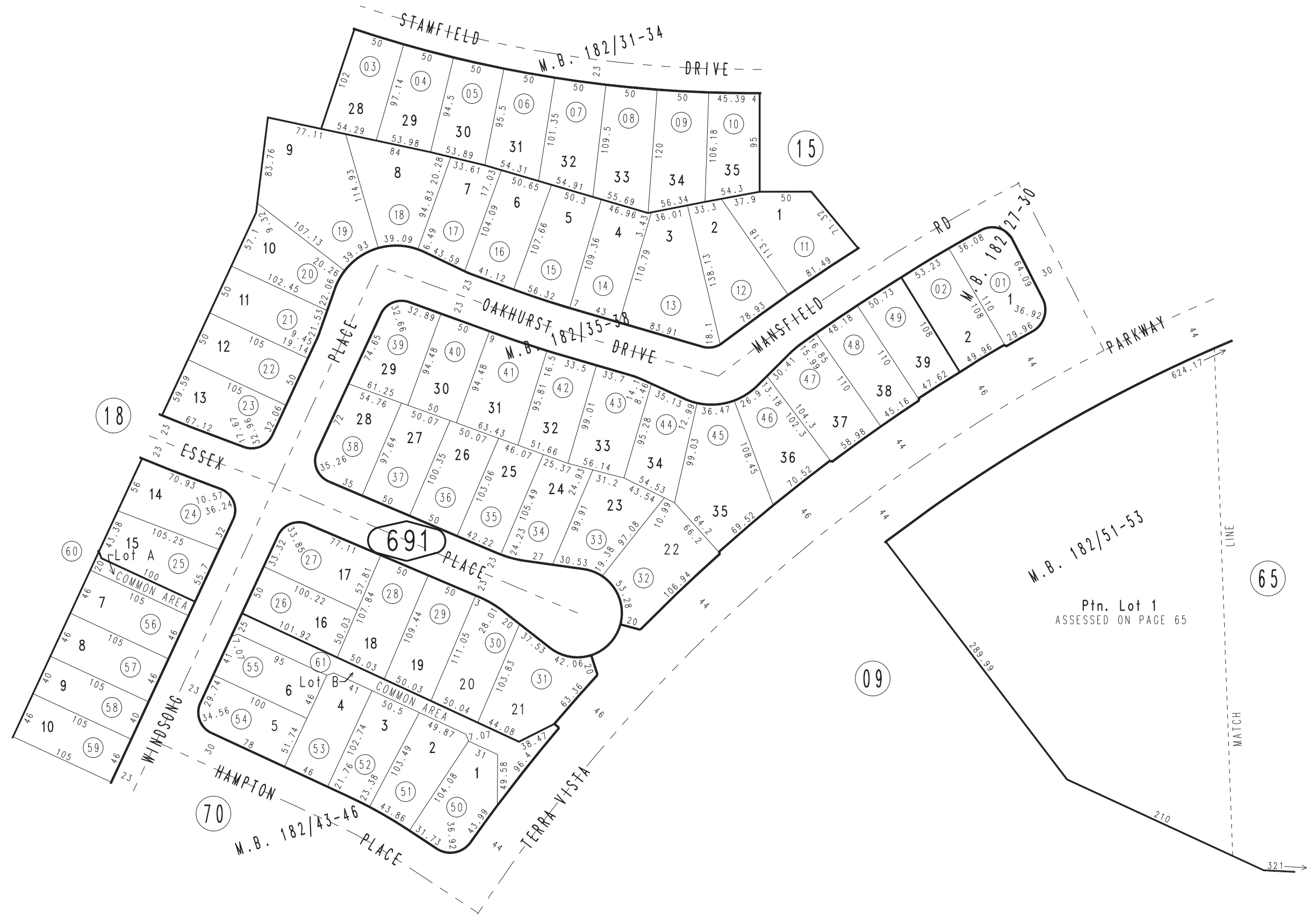
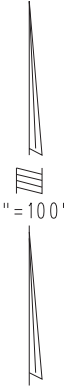


THIS MAP IS FOR THE PURPOSE
OF AD VALOREM TAXATION ONLY.

Ptn. Tract No. 12319-4, M.B. 182/27-30

City of Rancho Cucamonga 1077 - 69
Tax Rate Area
15010



Ptn. Tract No. 12672, M.B. 182/51-53
Ptn. Tract No. 12319-8, M.B. 182/43-46
Tract No. 12319-6, M.B. 182/35-38
Ptn. Tract No. 12319-5, M.B. 182/31-34

September 2004

Ptn. N.W.1/4, Sec.1
T.1S.,R.7W.

Assessor's Map
Book 1077 Page 69
San Bernardino County

REVISED
04/19/11 RM