

THIS MAP IS FOR THE PURPOSE OF AD VALOREM TAXATION ONLY.

Tract No. 12670-3, M.B. 182/90-93

City of Rancho Cucamonga 1077 - 67
Tax Rate Area
15010



1076
59

N LI SEC 1 T1S R7W

BASELINE

ORIGINAL

IMPROVEMENTS

ROAD

87 89 87 92 98 102 93.5 87

1"=100'

12

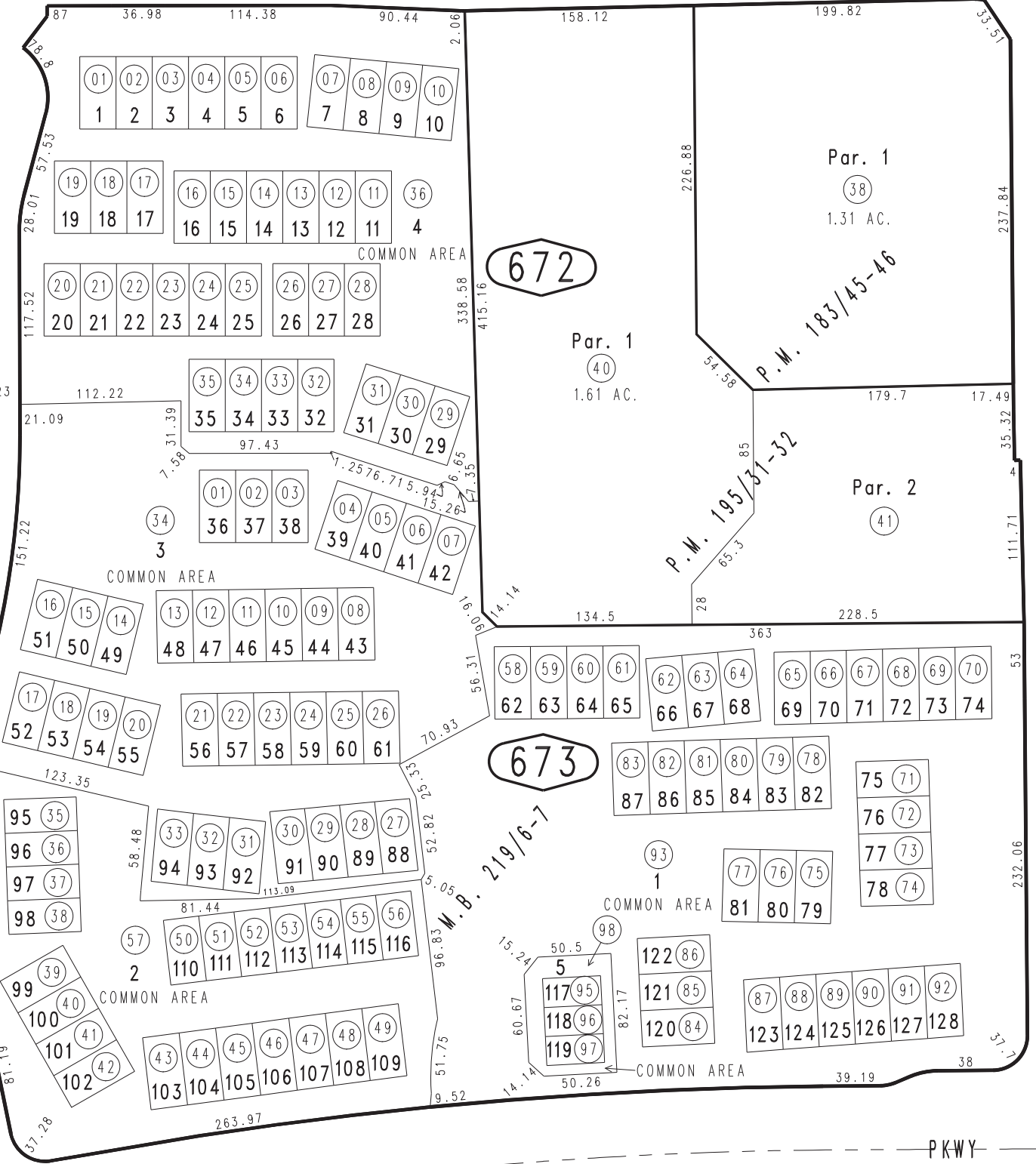
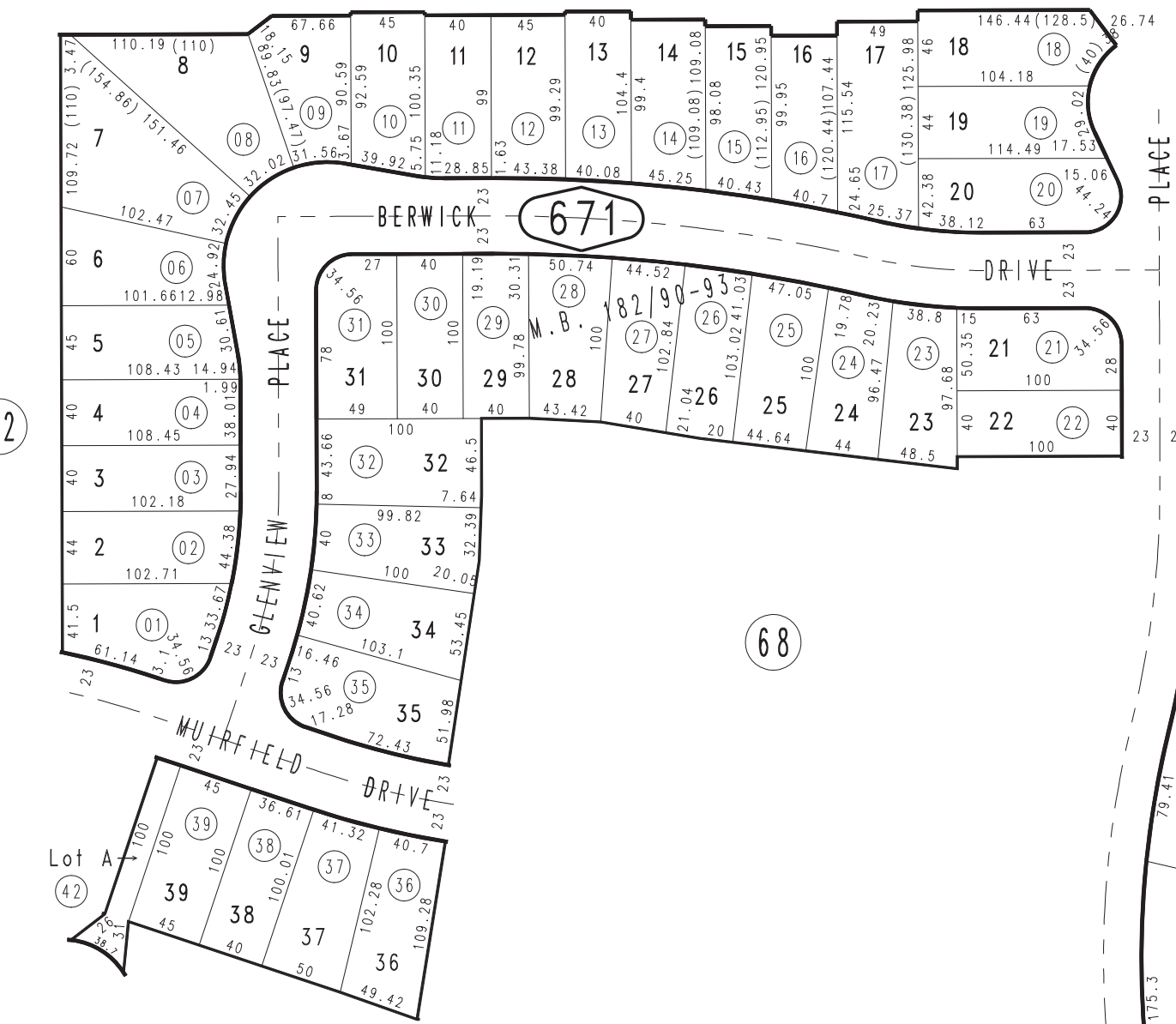
671

68

672

673

1090
01



Parcel Map No. 15666, P.M. 195/31-32
 Tract No. 14150, M.B. 219/6-7, Condo Plans, 89-0089373,
 89-0089374, 89-0089375, 89-0179198, 89-0268940
 Ptn. Parcel Map No. 14001, P.M. 183/45-46

September 2004

Ptn. N.E.1/4, Sec.1 81
T.1S.,R.7W.

Assessor's Map
 Book 1077 Page 67
 San Bernardino County

REVISED
 04/19/11 RM
 07/28/11 LH-MC
 12/11/13 GW