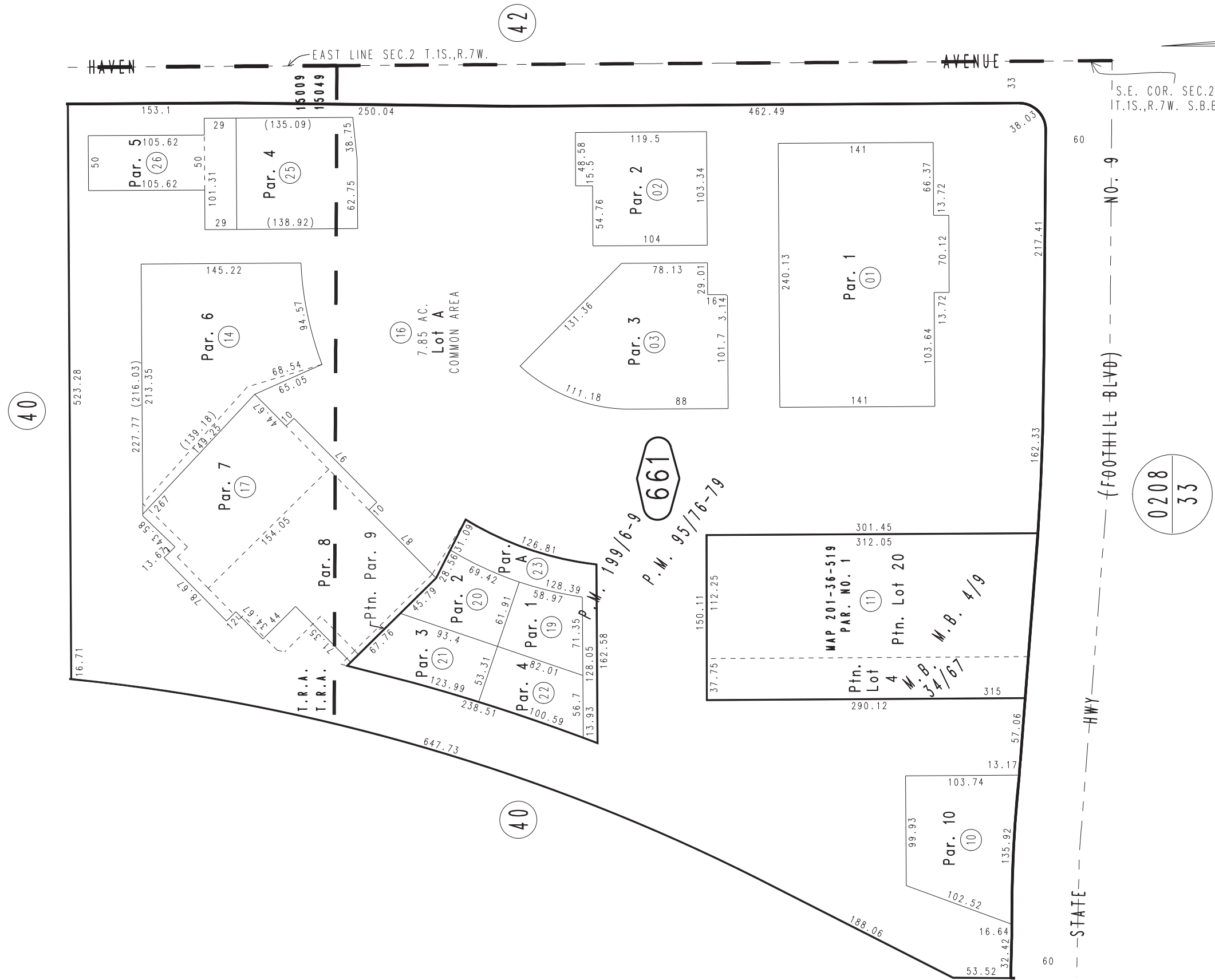


THIS MAP IS FOR THE PURPOSE OF AD VALOREM TAXATION ONLY.



Ptn. Parcel Map No. 8303, P.M. 95/76-79

City of Rancho Cucamonga 1077 - 66
Tax Rate Area
15009, 15049



Parcel Map No. 15902, P.M. 199/6-9
Ptn. Tract No. 2202, M.B. 34/67
Ptn. Cucamonga Fruit Lands, In Sec.2, T.1S.,R.7W., M.B. 4/9

Ptn. S.E.1/4, Sec.2
T.1S.,R.7W.

Assessor's Map
Book 1077 Page 66
San Bernardino County

REVISED
07/18/08 LH
12/18/08 LH
05/06/09 GL