

THIS MAP IS FOR THE PURPOSE OF AD VALOREM TAXATION ONLY.

Ptn. S.W.1/4 Sec.2, T.1S.,R.7W., S.B.B.&M.

City of Rancho Cucamonga 1077 - 64
Tax Rate Area
15009 15049



1"=100'

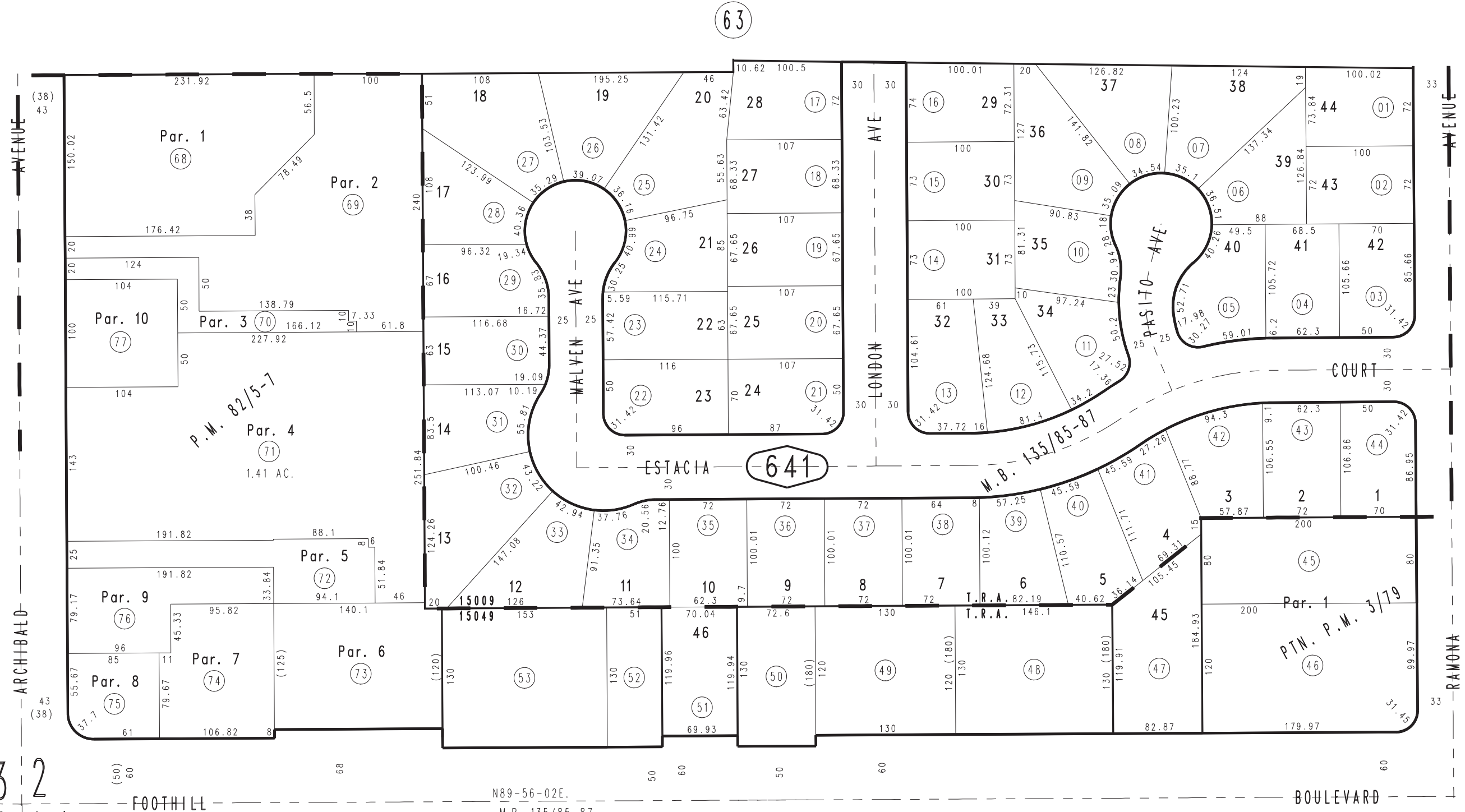
0208
15

62

3 2
1 0 1 1

0208
28

0208
30



Parcel Map No. 6726, P.M. 82/5-7
Parcel Map No. 296, P.M. 3/79
Tract No. 9409, M.B. 135/85-87

Assessor's Map
Book 1077 Page 64
San Bernardino County

September 2004

REVISED
05/05/09 GL