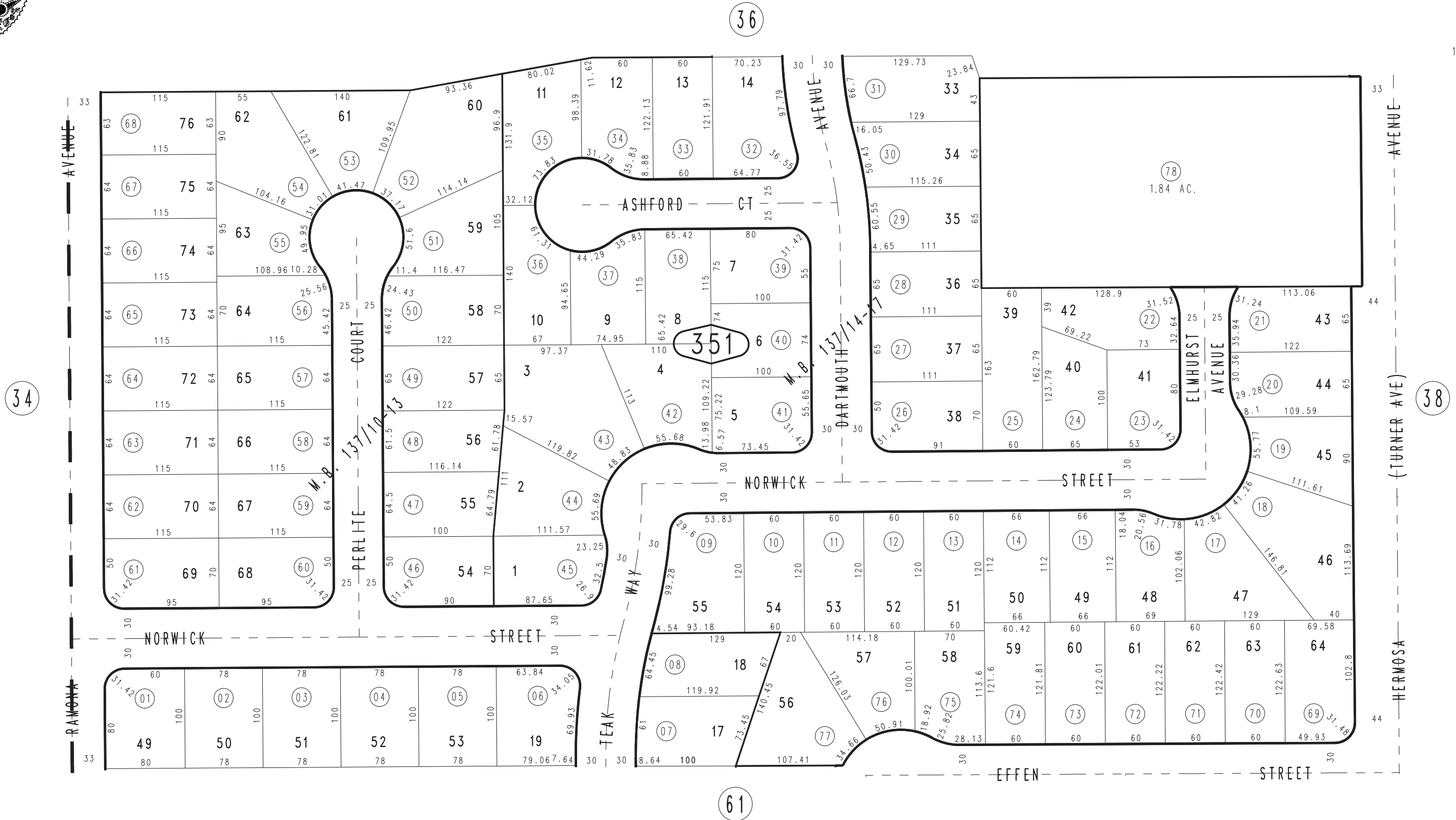


THIS MAP IS FOR THE PURPOSE  
OF AD VALOREM TAXATION ONLY.

Ptn. S.W.1/4, Sec.2, T.1S.,R.7W., S.B.B.&M.

City of Rancho Cucamonga 1077 - 35  
Tax Rate Area  
15009



September 2004

Ptn. Tract No. 9422-2, M.B. 137/14-17  
Ptn. Tract No. 9422-1, M.B. 137/10-13

Assessor's Map  
Book 1077 Page 35  
San Bernardino County

REVISED  
05/04/09 GL  
02/23/10 LH  
08/10/11 LH-MC