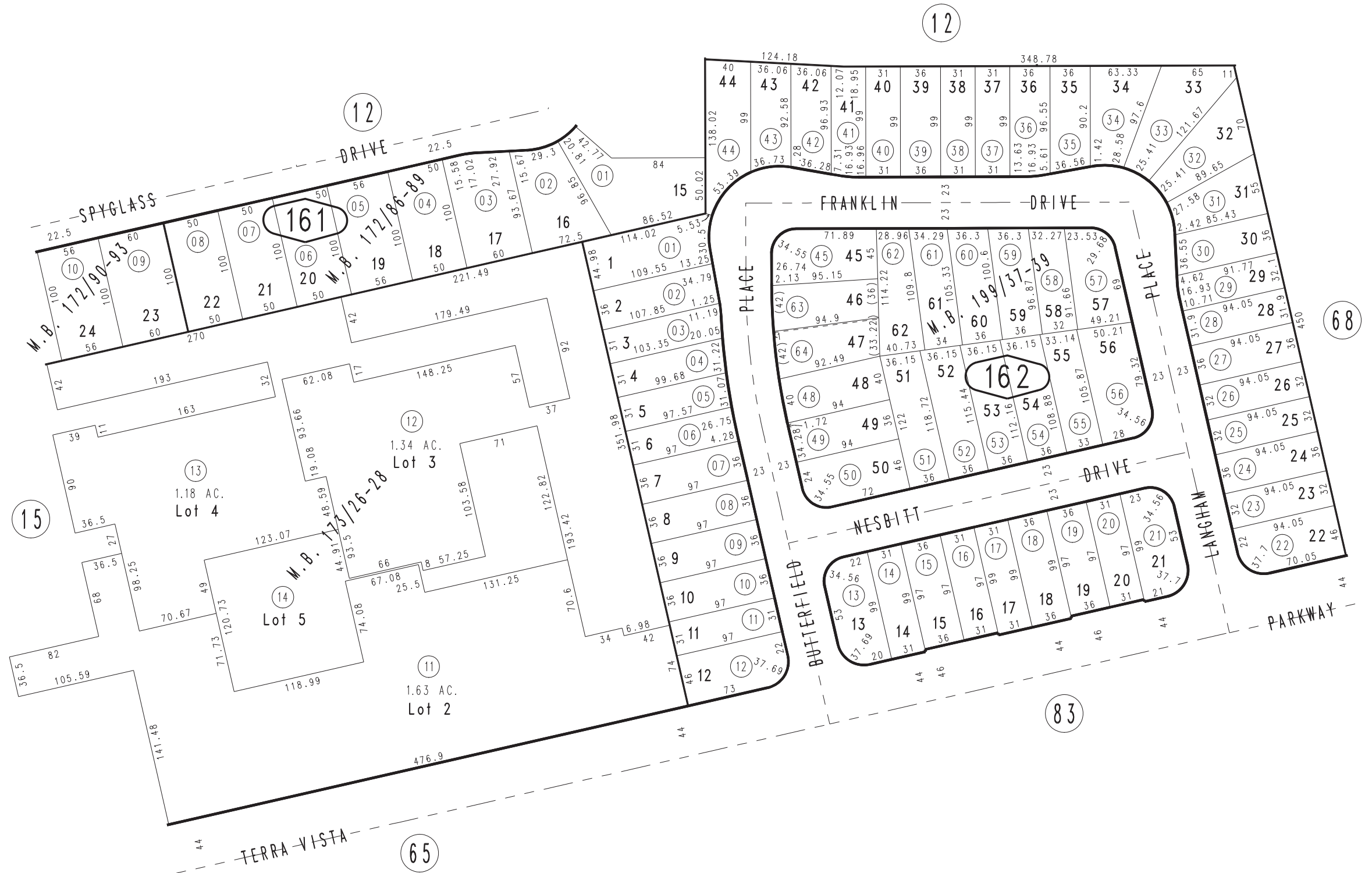


THIS MAP IS FOR THE PURPOSE  
OF AD VALOREM TAXATION ONLY.

Ptn. Tract No. 12364, M.B. 172/86-89

City of Rancho Cucamonga 1077 - 16  
Tax Rate Area  
15010



Tract No. 13192, M.B. 199/37-39  
Ptn. Tract No. 12402, M.B. 173/26-28  
Ptn. Tract No. 12364-1, M.B. 172/90-93

September 2004

Ptn. N.E.1/4, Sec.1  
T.1S.,R.7W.

Assessor's Map  
Book 1077 Page 16  
San Bernardino County

REVISED  
07/20/16 GW