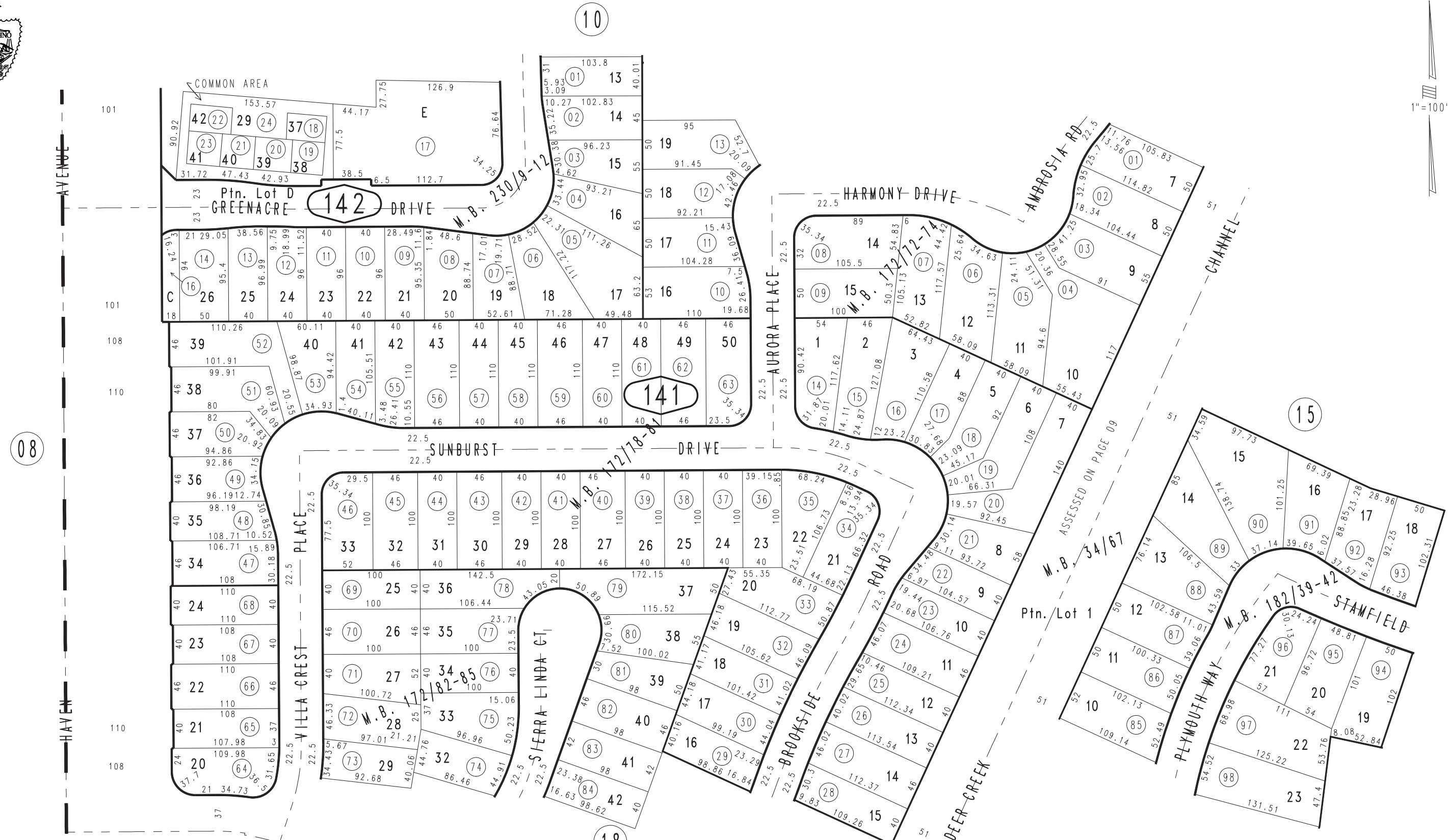


THIS MAP IS FOR THE PURPOSE OF AD VALOREM TAXATION ONLY.

Ptn. Tract No. 2202, M.B. 34/67

City of Rancho Cucamonga 1077 - 14
Tax Rate Area
15010



Ptn. Tract No. 13662, M.B. 230/9-12, Condominium Plan, 90-158255, O.R.
 Ptn. Tract No. 12319-7, M.B. 182/39-42
 Ptn. Tract No. 12317-1, M.B. 172/82-85
 Tract No. 12317, M.B. 172/78-81
 Ptn. Tract No. 12316, M.B. 172/72-74

Ptn. N.W.1/4, Sec.1
 T.1S.,R.7W.

Assessor's Map
 Book 1077 Page 14
 San Bernardino County

REVISED
 02/17/12 RU-MC