

THIS MAP IS FOR THE PURPOSE OF AD VALOREM TAXATION ONLY.

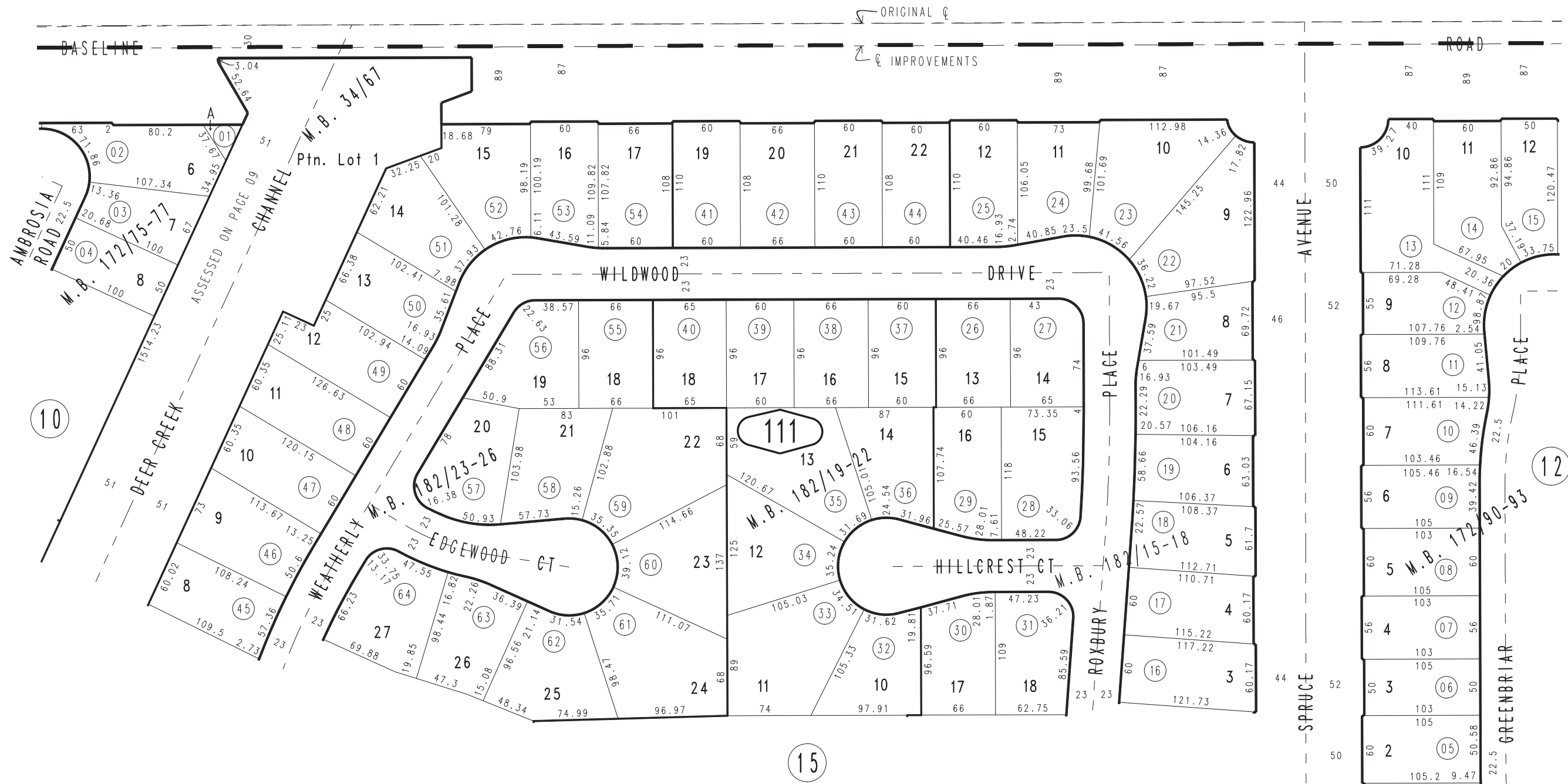
# Ptn. Tract No. 2202, M.B. 34/67

City of Rancho Cucamonga 1077 - 11  
Tax Rate Area  
15010



1076  
49

1076  
59



Ptn. Tract No. 12319-3, M.B. 182/23-26  
 Ptn. Tract No. 12319-2, M.B. 182/19-22  
 Ptn. Tract No. 12319-1, M.B. 182/15-18  
 Ptn. Tract No. 12364-1, M.B. 172/90-93  
 Ptn. Tract No. 12316-1, M.B. 172/75-77

September 2004

Ptn. N.W.1/4, Sec.1  
T.1S.,R.7W.

Assessor's Map  
Book 1077 Page 11  
San Bernardino County

REVISED  
07/29/11 LH-MC  
02/17/12 RU-MC