

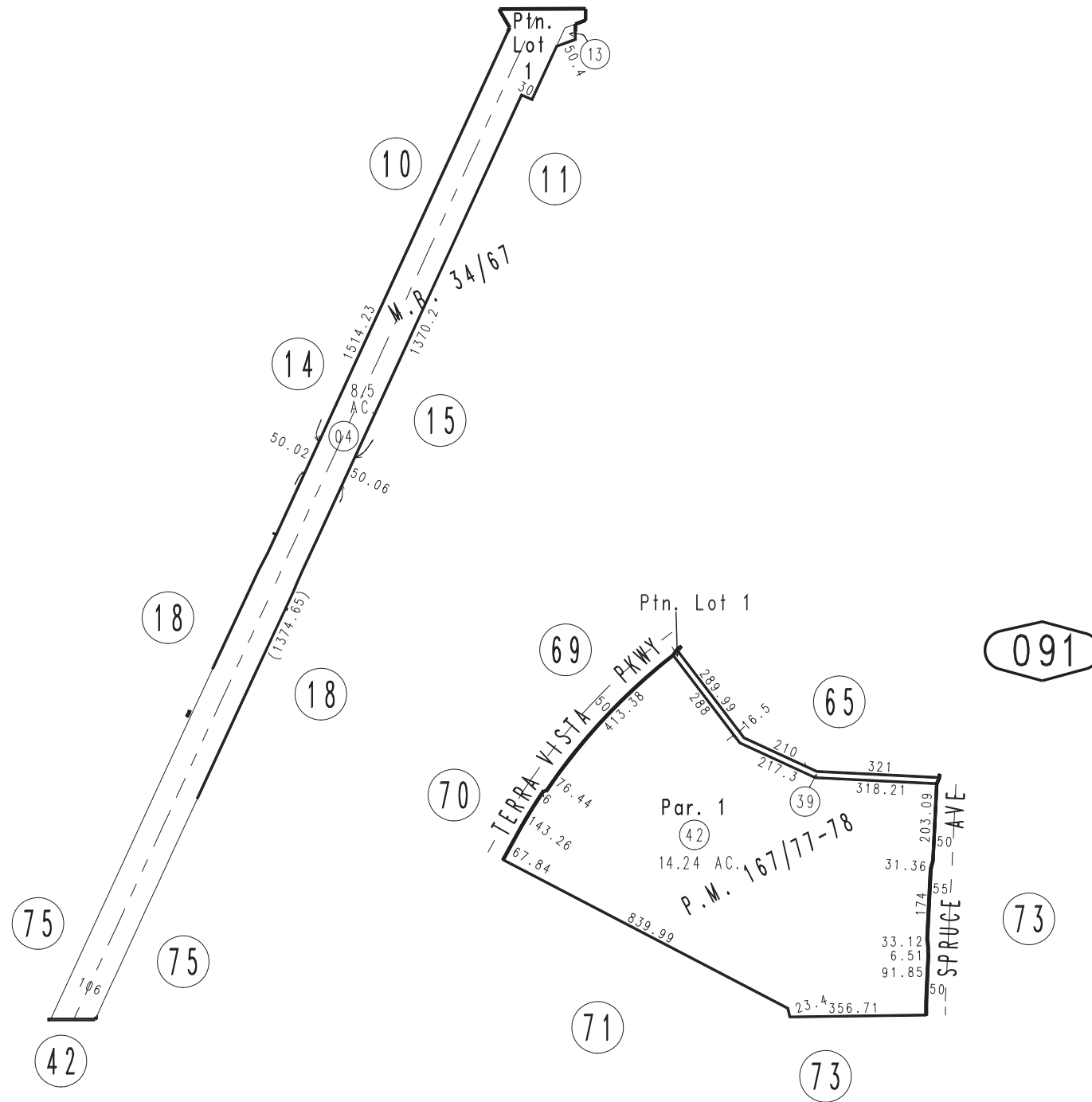
THIS MAP IS FOR THE PURPOSE
OF AD VALOREM TAXATION ONLY.

Ptn. N.1/2 Sec.1, T.1S.,R.7W., S.B.B.&M.

City of Rancho Cucamonga 1077 - 09
Tax Rate Area
15010



N.E. COR. SEC.1
1" = 400'



September 2004

Parcel Map No. 13755, P.M. 167/77-78
Ptn. Tract No. 2202. M.B. 34/67

Assessor's Map
Book 1077 Page 09
San Bernardino County

REVISED
01/13/10 BK
02/17/12 RU-MC